

LATIN AMERICA DAY at the Royal Geographic Society

Presentations schedule

10.00 Welcome – Coffee and tea will be served for our guests



ONDAATJE THEATRE

Schedule Room 1 (2hr presentations)

❖ **11.00** Presentation: **MEXICO**

Mayas & Aztecs, Pacific Coast, Colonial Cities and Yucatan Peninsula by
Barbara Kastelein

13.00 Lunch – Enjoy Latin American Music & Dance (Show by [Jean Abreu](#))

❖ **13.30** Presentation: **ECUADOR & Galapagos**

Enchanted Galapagos Islands and Highlights of mainland Ecuador
by *Pierre Thomas*

15.30 Afternoon Coffee & Tea – Enjoy Latin American Music (Music by Diego Rojas)

❖ **16.00** Presentation: **ARGENTINA & Chile**

Patagonia, Lake District, Iguazú Falls, Salta Region, Estancias, Tango, Atacama
Desert and Torres del Paine by *Diego Naveiro*

18.00 Drinks & Canapés - Enjoy Latin American Music & Dance (Show by Braz dos Santos)

19.30 End of the event



EDUCATION ROOM

Schedule Room 2 (45min presentations)

❖ **11.00** Presentation: **ANTARCTICA**
by Anna Bacanello Veloso Tours specialist team

❖ **11.45** Presentation: **Veloso Tours & Rio de Janeiro**
by Luciana Dumphreys Veloso Tours specialist Guide

12.45 Lunch – Enjoy Latin American Music & Dance (Show by [Jean Abreu](#))

❖ **13.30** Presentation: **The Iguazu Falls Atlantic Rainforest**
Sustainable tourism devoted to the conservation of the Rainforest
by Charlie Sandoval from Yacutinga Lodge

❖ **14.30** Presentation: **Amazon and La Ruta del Sol Ecuador**
by Dominic Hamilton from Manatee & Mantaraya

15.15 to 15.40 Afternoon Coffee & Tea - Enjoy Latin American Music
(Music by [Diego Rojas](#))

❖ **15.45** Presentation: **Galapagos Cruises & Avenue of the Volcanoes**
by Rose Marie Rubio from Andando Tours / Angermeyer Cruises

❖ **16.20** Presentation: **Galapagos Cruises, Rail & Road Journeys**
by Rosario Arroyo from Metropolitan Touring

❖ **17.00** Presentation: **BOLIVIA**
by Jorge Cardenas from Magri Turismo

18.00 Drinks & Canapés – Enjoy Latin American Music & Dance
(Show by Braz dos Santos)

19.30 End of the event



The EXHIBITORS

❖ INKATERRA Hotels

For over 30 years, Inkaterra has pioneered and promoted sustainable tourism in Peru. With the Inkaterra Machu Picchu Hotel in the heart of Andean cloud forest, and Reserva Amazonica Lodge, on the banks of the Madre de Dios River in the Amazonian forest, Inkaterra has introduced many thousands of people to the natural wonders and the indigenous cultures of Peru.

Each year Inkaterra hosts more than 65,000 travellers providing authentic nature experiences in Peru; while rescuing, presenting and showcasing Peru's culture and nature for the world.



❖ AQUA Luxury Amazon Voyages

The 130-foot-long, M/V Aqua is the first true luxury cruise ship on the northern Amazon River in Peru and was custom built for Aqua Expeditions by Peruvian architect [Jordi Puig](#) in 2007 to offer an extraordinary level of comfort for our guests.

A luxury cruise down the Amazon River in Peru gives you a feeling of being completely transported to a new natural world.



❖ METROPOLITAN TOURING Galapagos Cruises & Hotels

Metropolitan Touring, founded in 1953, is the leading Travel Corporation in Latin American with its own ship-based expeditions in the Galapagos Islands

Their yachts include LA PINTA and ISABELA II and the 90-guest MV SANTA CRUZ and on Santa Cruz Island the Finch Bay Eco Hotel Resort.





❖ ORIENT - EXPRESS Trains & Hotels

“Authentic local experiences make travel more rewarding. They surprise. They inspire. They can challenge or entertain. Whatever they do, they keep us coming back for more”.

What makes Orient - Express hotels, restaurants and trains special are their unique characters. The local culture and environment of each one has had a direct impact on the experience of being there.

Take the Hotel Monasterio in Cusco that elegantly blends Incan with Spanish colonial heritage or the Hiram Bingham Train to Machu Picchu a magical luxury journey to a once in a life time destination.

Orient - Express will be exhibiting all their properties and train journeys in Latin America.

ORIENT-EXPRESS

❖ ECOVENTURA Galapagos Yachts

Family owned since 1990, Ecoventura operates a fleet of four expedition vessels in the Galapagos Islands, cruises catering to active adults and families; the Eric, Flamingo & Letty, superior first-class 20-passenger motor yachts, with departures every Sunday on comprehensive 7-night itineraries including the outer, most spectacular islands in the archipelago.



❖ MANATEE Amazon Explorer

WELCOME to the wonderful Ecuadorian Amazon!

A family run business, the Manatee Amazon Explorer is 90 feet long river boat which accommodates 30 guests in comfortable cabins. Discover some of the most remote places on the planet exploring the northeast Ecuadorian Territory declared Biosphere Reserve by UNESCO.

MANTARAYA Machalilla National Park

Mantaraya Lodge is located at the Machalilla National Park in the Province of Manabi, 15 minutes drive from Puerto Lopez on LA RUTA DEL SOL. Machalilla National Park attractions includes Isla de la Plata off the coast of Puerto López, Los Frailes Beach, the Archeological Site of AguaBlanca, Salango, and the Beaches of Puerto Rico and Puerto Cayo.



❖ ANDANDO & ANGERMEYER CRUISES Galapagos Motor Sailors & Yachts

Specializing in classic motor-sailors that mix a unique combination of ambiance and understated comfort, their vessels include two first-class vessels: S/S Mary Anne and S/S Sagitta and two yachts: M/S The Beagle and M/Y Samba.



❖ MAGRI TURISMO Bolivian specialist

Magri Turismo was founded in 1973. It is a leading company in Bolivia with its main objective showing the cultural and geographical wealth Bolivia has to offer.

Magri Turismo is very focused on Ecotourism in Bolivia and also owns the Ecolodge at Sun Island (Isla del Sol) on the Lake Titicaca.



❖ CYNOSA Argentinean specialist

Cynsa Tour Operator was founded in Montevideo Uruguay in 1954 and in May 1974 the office in Buenos Aires was founded. Their knowledge of Argentina is vast, from the Iguazu Falls to Patagonia and less known areas such as Fitz Roy and Salta.



❖ YACUTINGA lodge

Yacutina Lodge and its Nature Reserve located on the upper Iguassú River 80km from the spectacular Iguassu Falls in the northeastern Misiones Province of Argentina. This unique Lodge provides a great opportunity to explore the mysteries of the Interior Atlantic Rainforest far away of massive tourism where you can live and breathe the atmosphere of the pristine subtropical jungle and enjoy the peace and tranquillity.



❖ TIVOLI PRAIA DO FORTE Eco Resort

Located 50 km from Salvador da Bahia in Northern Brazil, this Eco Resort is surrounded by 200,000 square metres of gardens and coconut groves. 12 km of semi-deserted white sand beaches, shallow crystalline waters where natural pools form amongst the coral reefs - perfect for snorkeling and diving, delightful lawns stretching along the coast, where one can lie in the shade of the palms; and nearby, a charming, colourful fishing village, home to the Tamar Turtle Project.



❖ CATA – Central America Tourism Agency

Established in 2002, CATA is the result of the strategic alliance of Belize, Costa Rica, El Salvador, Guatemala, Honduras, Nicaragua and Panama to promote the region's tourism offering in Europe under a single Central America brand.

Central America offers visitors a great diversity of tourism products within a relatively compact space. In Central America, visitors can enjoy tropical beaches, pristine jungle and rainforest, majestic volcanoes, exhilarating outdoor activities, fascinating wildlife, and a rich cultural and historic heritage with well preserved colonial cities, Maya archaeological sites and the opportunity to meet local indigenous communities to learn first-hand about their traditions.



❖ MTB – Mexico Tourism Board

The Mexico Tourism Board (MTB) brings together the resources of federal and state governments, municipalities and private companies to promote Mexico's tourism attractions and destinations internationally. Created in 1999, the MTB is Mexico's tourism promotion agency, and its participants include members of both the private and public sectors. The MTB has offices throughout North America, Europe, Japan and Latin America.



❖ Ministry of Tourism of Ecuador

The Ministry of Tourism of Ecuador is in charge of the proper implementation of the Marketing Touristic Plan of Ecuador from the 2010 through 2014. During all the actions done by this public organism, Ecuador is looking forward to be known as the country of the middle of the world, as the most mega – diverse country of the world, and a world leader sustainable touristic destiny. The ministry of Tourism, as a government organization, supports the accomplishment of the Constitution that establishes the right to the nature and the right to the Good Living, to the recreation and the enjoyment. Therefore, this institution works for offering every tourist unique experiences in each one of the four worlds of Ecuador.



❖ IBERIA Airlines

Iberia has the most extensive network of Flights to all countries in Latin America, departing from London or Dublin to Madrid connecting with direct, non-stop daytime or overnight flights and extensive partnership with local airlines on arrival in Latin America.



❖ CONTINENTAL Airlines

Continental Airlines have daily flights to all destinations in Latin America, connecting in Miami, New York, Dallas or Houston. Best for Central America, all of Mexico, Ecuador (Quito) & Peru (Lima) departing from London, Manchester Norwich, Edinburgh and Glasgow.



Latin American Dancers & Musicians at the event



Latin American Music

HARPIST *Diego Alonso Laverde Rojas* has played the "Llanera (lowland)" Harp from Bogotá, Colombia, since 1982 in several Colombian and Latin American folkloric groups. This particular harp design is the product of the European influence, and has been adopted in a beautiful area between Colombia and Venezuela known as "Los Llanos" (the plains).

In Colombia, Diego taught in various music academies and was director of the Folkloric group of the Central University of Bogotá. He toured the world as a musician with the "Ballet Folklorico Colombiano".

For more information please visit www.arpalatina.com

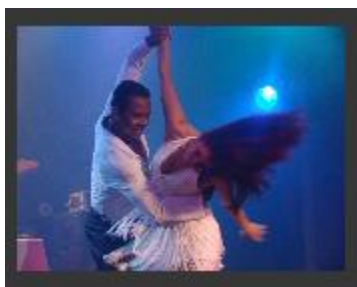
Or to listen to his wonderful and unique music please [click here](#)



13.00 Show by Brazilian Contemporary Dancer and Choreographer – *Jean Abreu*

Brazilian-born Jean Abreu is one of the UK's most closely watched new talents, his mix of modern dance, martial arts and Latin American traditions present unearthing performances highly charged with emotion!

For more information please visit www.jeanabreu.com



18.00 Show by Brazilian dancer *Braz dos Santos*

Braz was one of the leading dancers of the famous group "Grupo Kaoma" which has introduced Lambada all over the world in 1989. During 1989 till 1994 he has lead the dancing group of Kaoma and brought Lambada to 64 nations. He is a talented dancer who has travelled all over Europe showing his passion for Brazilian dance.