

ARGENTINA

Argentina is a vast country with a relatively small population and a culture based on agriculture and the cattle breeding of the Gauchos. The strong multi-European heritage is present throughout the country, especially in the cosmopolitan capital Buenos Aires, and remains a source of great pride to all Argentines.

web veloso.com/argentina



Landscape

Stretching 3,460km from north to south, to the east of the Andes, Argentina embraces subtropical rainforests, desert in the north, the flat pampa, and windswept Patagonia, where granite massifs rise out of the earth and brilliant glaciers are reflected in still, icy lakes.

Culture

Home of the tango and gauchos, the strong European links are clear upon arrival in Buenos Aires, a

cosmopolitan metropolis with architecture and stylish street cafés, reminiscent of Paris. Argentina is famed for its beef, a centre-stage ingredient of the traditional parrillada (barbecue).

Wildlife

Depending on the season, a whole wealth of wildlife can be observed

at close range on the Península Valdés. Whales make their annual visits, as do penguins (some 2 millions during the peak season), elephant seals, sea lions and their lethal predator, the killer whale. Also present are guanacos, foxes, rheas, armadillos, and a wide array of birds including the burrowing owl, petrel and albatross.



CONTENTS

PAMPA TOUR	77
BUENOS AIRES	78
ESTANCIAS, POLO & RIDING	79
LAKE DISTRICT	80
MENDOZA	81
IGUAZU FALLS	82
VALDEZ & SALTA	83
PATAGONIA & CRUISE	84-87

WILDLIFE, GLACIERS & PATAGONIA



The Perito Moreno Glacier reaches the opposite bank for a perfect vantage point, Days 10-12.

Argentina promises wildly differing landscapes, from tropical rainforest at the magnificent Iguazu falls, to the icy waters of the Beagle Channel in Tierra del Fuego, and the mighty glaciers of Southern Patagonia. The mountain chain of the Andes provides a breathtaking terrain for exploring the great outdoors and observing a wealth of flora and fauna, especially in the Lake District.

Days 1-4 Depart on an overnight flight direct to Buenos Aires known as the 'Paris of South America'. Transfer to the hotel, staying for three nights. Afternoon guided tour of the city, visiting the artistic and brightly decorated houses of La Boca, the historic 'Casa Rosada' Presidential Palace and admiring the architecture, wide avenue, cafes and parks. Enjoy one of the famous Tango Shows with dinner, great music and superb dancers. (B)

Days 5-6 A morning flight to the immense Iguazú Falls, set in tropical rainforest where walkways take us over the numerous falls which make up this great natural wonder. Birds and butterflies abound in the lush forest surroundings. We stay for two nights with a full day tour to walk the trails on the Argentinean side and cross the border to Brazil for a stunning panoramic view of the waterfalls. (B)

Days 7-9 Fly to Buenos Aires, and on to Bariloche, surrounded by the stunning Andean scenery of Argentina's Lake District. Dense forests, snow-capped peaks, and vast lakes make this area ideal for outdoor enthusiasts. Spend a full day with our expert guide walking in the forest and visiting the most spectacular lookout points, with a picnic lunch served on the shore of the lake. (B,L)

Days 10-12 Flight to Calafate, for three nights by Lago Argentino. Spend the day admiring the massive Perito Moreno Glacier, where the silence is disturbed only by the creaking and groaning of ice which splinters, forming icebergs as we watch. The next day we take a boat trip on another arm of the lake to see Upsala & Spegazzini Glaciers. (B)

Days 13-14 Fly to Ushuaia, for two nights in Tierra del Fuego. Two half day excursions to windswept trees of Lapataia National Park and a boat trip into the icy Beagle Channel. (B)

Days 15-16 Return to Buenos Aires and overnight. Take our return flight the following day, arriving home on Day 17. (B)

The Pampa Tour departs everyday. INCLUDING: 17 days, 14 nights' accommodation and breakfast (B), all flights (2 overnight), taxes, all transfers and excursions with our English-speaking guides, entrance fees, services of our agents throughout, all transport and meals as per the itinerary shown. Please see pages 190 -193 for further details of what is included.



Iguazú Falls, Days 5-6



PRIVATE INDIVIDUAL TOUR GUIDELINE PRICES - Departure everyday

	Tourist			First		
	1 Single Traveller	Travelling Together Double	Own Room	1 Single Traveller	Travelling Together Double	Own Room
PAMPA Tour						
25Dec-21Jun, 17Aug-12Dec	£5400	£3890	£4463	£6852	£4531	£5296
22Jun-16Aug, 13Dec-24Dec	£5663	£4153	£4726	£7115	£4794	£5559

GUIDELINE TOUR PRICES are all per person, subject to availability, as all services are booked when you pay your deposit. Please refer to our website veloso.com for current prices and any special offers available. To obtain a Guaranteed Price for your travel dates, please call 020 8762 0616, email travel@veloso.com, or contact our appointed travel agents. Prices for Special Events, New Year's Eve, Christmas, Easter on request.

FLIGHTS on BRITISH AIRWAYS departing from London and UK Airports, Internal Flights and Taxes, are included. UPGRADE to Business Cabin seat add: £2945 in High Season / £3208 in Low Season; Premium Economy Seat : £680

HOTELS used, descriptions and photographs on our website, veloso.com/pampa

TAILOR-MADE SERVICE: Please enquire for a personalised itinerary to fulfil your individual requirements. We can combine hotels, change route, excursions and we can offer triple rooms, suites and De Luxe Hotels.

The Pampa Tour 14 night itinerary:

Buenos Aires - 3 nights

Iguazú Falls - 2 nights

Bariloche - 3 nights

Calafate - 3 nights

Ushuaia - 2 nights

Buenos Aires - 1 night

web veloso.com/pampa

BUENOS AIRES

web veloso.com/buenosaires

Buenos Aires is the archetypal Latin American city, with a European twist. Its people are deeply Latin: exuberant, energetic and passionate, and nowhere is that more apparent than in their favourite dance, the Tango. The city, lovingly redesigned in the French style at the turn of the century, still merits its title "the Paris of South America". What was once the Mecca of arts and music in the Americas later went into decline, and this sense of romanticism and faded grandeur makes it a fascinating place to soak up the ambience of a city that seems to exist in a world all of its own.



Casa Rosada, Buenos Aires

Alvear Palace Hotel *Deluxe*



Built in 1932 and recently renovated, this is arguably the most elegant deluxe hotel in Buenos Aires and is located in the heart of La Recoleta, surrounded by excellent restaurants and shops. Decorated in Louis XVI style, its 100 spacious rooms and 95 suites feature WiFi, personal butler, a basket of fruit and flowers daily and cable TV. There are two restaurants and the "Jardin D'Hiver" serves afternoon tea.

Legado Mitico *First Boutique*



Legado Mitico is a beautiful, boutique hotel in the trendy, bohemian quarter of Palermo Viejo, ideal for those who seek the authentic and sophisticated side of Buenos Aires. It feels homely, comfortable and stylish, with living room, dining room and only eleven rooms, each individually decorated with art and antique furniture in a classic style with modern touches.

Regal Pacific *First*



The Regal Pacific hotel offers excellent value and location, close to the trendy Puerto Madero restaurants and a short walk from Recoleta, the main avenue and shopping district. The hotel has comfortable executive style rooms with modern interiors, amenities and luxurious bedding. There is also an outdoor swimming pool and sun terrace for 'al fresco' dining.

Mine Hotel *Boutique*

This boutique hotel is located in the heart of Palermo Soho, metres from Plaza Julio Cortazar and many other touristic points of the city such as La Boca, San Telmo and the Plaza de Mayo. With strong Thai influences mixed with modern elements, the ground floor is warmly decorated.

De las Americas *Tourist*

A comfortable hotel situated in the heart of the Barrio Norte within walking distance of exclusive shops off the Santa Fe and 9 de Julio avenues. All 162 spacious rooms have private facilities, minibar, air conditioning and modern amenities. There is 24 hour room service, restaurant and bar.

Loisuites *First*

Close to Recoleta Park and museums, art galleries and shopping areas, historical architecture and beautiful parks. The hotel has a large pool, good quality rooms, restaurant serving international and local cuisine and a bright, relaxed atmosphere.

Additional Hotels available: Alvear Art, Nuss, Sofitel, Design Suites, Emperador, Pulitzer Boutique, Four Seasons, Park Hyatt, Kenton Palace, Faena Hotel & Universe, San Telmo Suites and many others

Excursions available in Buenos Aires:

- San Telmo Antique Market
- Recoleta & Historical Monuments
- Remarkable Bars & Coffee Shops
- La Boca & Caminito
- Private Tango Lessons
- Typical Milongas by day & night
- Tango Shows: Esquina de Carlos Gardel
- Colon Theatre for Classical Music and Opera
- The Rio de la Plata Delta & El Tigre
- Learn about the life of Eva Peron
- Diego Maradona & Boca Juniors Stadium
- Football match at Boca Juniors Stadium
- Estancias & Gaucho 'Rodeos'
- Montevideo, capital of Uruguay
- Shopping for Argentine Leather
- Book & Antique Shops



PRICES

2 SHARING SEASONS*	3 NIGHTS INCLUDING TRANSFERS	EXTRA NIGHT
ALVEAR PALACE		
01Jan-30Mar; 30Sep-31Dec	£805	£238
31 Mar-29 Sep	£755	£220
LEGADO MITICO		
All Year	£497	£134
REGAL PACIFIC		
01Jan-29Feb; 13-31 Dec	£324	£76
01Mar-30 Sep	£306	£70
01Oct-12Dec	£369	£91
MINE HOTEL		
02Jan-01Feb; 01Oct-17Dec	£395	£100
02Feb-27Mar; 01-30Sep	£380	£95
01Apr-31Aug	£308	£71
18-31 Dec	£416	£107
DE LAS AMERICAS		
All year	£213	£61
LOISUITES		
03Jan-29Feb; 01May-28Dec	£351	£85
01Mar-03Apr	£342	£82
04-30Apr	£387	£97

Prices are per person in a Standard Room for double occupancy including accommodation and Breakfast, tax, service charge and transfers.
*Prices for Triple room, Single Room on request.



COUNTRY ESTANCIAS

web veloso.com/estancias

Dotted around the vast pampas are a number of delightful estancias with country houses that retain the elegance and charm of a bygone age, combined with the gaucho life of a working, cattle breeding ranch. The houses tend to be surrounded by parkland with lawns, big trees and a pool. Here you can relax, go horseriding, walk, watch gauchos at work or play polo and enjoy the tender meat of a mouthwatering barbecue.

Estancia La Bamba Deluxe



Estancia La Bamba de Areco is located close to the Pampa town of San Antonio de Areco with typical bar/restaurant, main square and the lifestyle of the Argentinian countryside. The property is essentially a country lodge and a gorgeous and romantic estancia. The original building opened in 1830 as a stagecoach stop along what had once been the old Camino Real, linking Buenos Aires with other colonial cities. The buildings are Pompeian red with white trim, contrasting with the

surrounding green landscape. The estancia accommodates 20 guests, and the social areas include a leisure room with TV and a swimming pool. Guests can experience the hacienda lifestyle through horse riding, walks, drives in carriages, bird watching, golf/tennis (8km. away) and lunch 'al fresco' under the trees. Guided tours to the village of San Antonio de Areco, Museum and Ricardo Güiraldes Creole Park can be provided at an extra cost. All meals are included.



Additional Hotels available: Bellavista Vista De Guerrero, La Isolina, El Ombu de Areco and Polo playing and tuition at Puesto Viejo.



Typical Argentine grilled meat "Parrillada"

La Escondida

Tourist Superior

La Escondida is a working ranch located in the heart of the Pampa. The wonderful hosting family breed polo ponies and cattle, speak English perfectly and are delighted to show you gaucho life. The house faces a small lake and is surrounded by woodland. Its rooms have private facilities, a courtyard, sitting and dining room, veranda, pool and activities include walking, horseriding and birdwatching.



PRICES

2 SHARING SEASONS	3 NIGHTS INCLUDING TRANSFERS	EXTRA NIGHT
COUNTRY ESTANCIAS		
<u>LA ESCONDIDA</u>		
All Year	£1072	£268
<u>ESTANCIA LA BAMBA</u>		
May - Aug	£933	£227
Jan - April	£1161	£303
Sep - Dec	£1058	£269

Prices are per person in a Standard Room for double occupancy including accommodation and breakfast, tax, service charge and return transfers from Buenos Aires. Prices for Triple room, Single Room and child fares available on request.

LAKE DISTRICT

web veloso.com/bariloche



The Lake District & Lake Nahuel Huapi where Llao Llao Hotel is located

Llao Llao *Deluxe*

This internationally renowned, mountain lodge-style hotel has 160 rooms, all with private bathroom, telephone, cable TV and safety deposit box. Various excursions are available, and keen walkers will enjoy the many delightful walks that start close by. There is a health and fitness centre, an entertainment area, a spa and a golf course, and the excellent restaurant offers both regional and international specialities.



El Casco Art *Deluxe*

The hotel is located four kilometers outside the city, in a property on the shore of lake Nahuel Huapi. It has 33 rooms, all with air-conditioning, WiFi, plasma screen, music player and stunning views of the lake. The decoration includes over 300 pieces of the Zurbam collection. The gardens house 24 sculptures by renowned artists. The restaurant serves award winning cuisine and there is a cocktail bar, health club and massage spa.



La Cascada *First*

Overlooking Nahuel Huapi Lake and set among breathtaking natural surroundings, enhanced by its gardens, a natural waterfall and a stream with the typical vegetation of the Patagonian region La Cascada Hotel offers twenty-four elegantly decorated rooms. The hotel's facilities include a restaurant & bar, an outdoor & indoor swimming pool, gym, sauna and a spa.



Estancias in the Lake District

Estancia Tres Lagos is a 10,000 hectare estate in Lanín National Park, amidst idyllic Andean scenery of snow-covered peaks, three glistening lakes, lush meadows and clear mountain streams. There are around 500 head of cattle, sheep, deer and over 70 horses suitable for both experienced riders and novices. Estancia Huechahue has 6000 hectares in the dry Pampa, terraces for alfalfa to feed the cattle, a small lake and houses are surrounded by tall trees. Great for walking and horseriding or taking a Cabalgata horseriding trek with the gauchos, camping for days in the wild.

BARILOCHE, SAN MARTIN & VILLA LA ANGOSTURA

Beautifully located on the shores of emerald Andean lakes, where the towering Andes slope to the Patagonian plains, the Argentinean Lake District is a paradise for walks and horseriding in the summer and skiing in winter. The alpine scenery varies from dense forests and snow covered peaks to mountain rivers and the dry Pampa. There is a variety of quality accommodation in the main town of Bariloche, while further afield cattle breeding Estancias offer a more rustic experience, with riding and fishing.



PRICES

2 SHARING SEASONS	3 NIGHTS INCLUDING TRANSFERS	EXTRA NIGHT
BARILOCHE HOTELS		
<u>LLAO LLAO</u> All Year	£565	£138
<u>EL CASCO ART</u> All Year	£515	£136
<u>LA CASCADA</u> All Year	£318	£64
LAKE DISTRICT ESTANCIAS		
<u>HUECHAHUE</u> All year	£1031	£286
<u>TRES LAGOS</u> All year	£1448	£394

Prices are per person in a Standard Room for double occupancy including accommodation and breakfast, tax, service charge and transfers. Prices for Triple room, Single Room and child fares available on request.

TRES LAGOS, HUECHAHUE & Cabalgatas
Prices shown are per person including transfers to/from Bariloche or any hotel in the city, daily walks and/or riding, accommodation, full board with all meals and drinks, activities, horse riding and English-speaking guide. The cabalgata also includes camping in two-man tents, mess and toilet tents, horse riding, guide and staff.

Additional Hotels available:

Bariloche
Edelweiss, Design Suites, Villa Huinid, Puma-Hue Lodge, Nahuel-Huapi, Alma del Lago, Panamericano
Villa La Angostura Correntoso,
Sol Arrayan, Las Balsas Relais & Chateaux San Martin de Los Andes
Casa Eugenia, Las Walkirias, Las Lengas



SELF DRIVE LAKE DISTRICT

Venture out of Bariloche into Argentina's Great Outdoors, along the picturesque Seven Lakes Road to explore the magnificent Lake District on your own with the hotels pre-booked, a road map and a hire car. Discover the smaller lakeside towns of San Martin de los Andes and Villa La Angostura, and make stops to walk in the stunning scenery of lush meadows, deep wooded valleys, emerald lakes and snow-covered peaks.

5 days • 4 nights

Day 1 On arrival at Bariloche Airport transfer to your hotel in Bariloche for 1 night at the hotel Alma del Lago. (B)

Days 2-4 You will be taken to the office to be briefed and receive your car. Hotels are booked along your route so you can drive making stops and detours. Stay at the picturesque village of Villa La Angostura (1 night Sol Arrayan Hotel), set on Lake Nahuel Huapi. Next day drive to San Martin de los Andes (2 nights Hosteria Antares) on Lake Lacar, where you can take walks in the woods round the lake shore. The Lanin National Park is also ideal for walking and offers great views of the snow-capped peak of the Lanin Volcano. (B)

Day 5 Drive back to the Airport, return your car and depart. (B)



PRICES - Self Drive Lake District

NO OF TRAVELLERS	1	2
All year	£1519	£794

Prices per person including private car (Fiat Siena, Renault Clio or similar) accommodation at first class hotels for 1 night in Bariloche, 1 night at Villa Angostura and 2 nights at San Martin de Los Andes, breakfast and assistance from local representatives. Extra nights can be arranged on request.

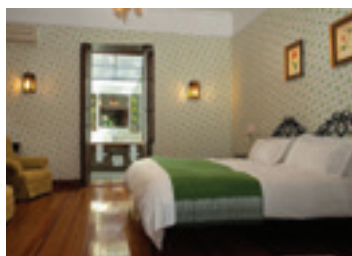


MENDOZA

Located at the foot of the Andes in Central Argentina, Mendoza is a charming city surrounded by the country's premier wine-producing region. Wide tree-lined avenues and handsome squares in the centre of town give way to a beautiful rolling countryside, filled with rows of vines and views of the snow-capped peaks. Relax and taste excellent wines at the vineyards, or make the breathtaking journey over the mountains to Santiago de Chile.

Finca Adalgisa Boutique

Nestled among its own vineyards just outside the city of Mendoza, Finca Adalgisa offers characterful accommodation in a relaxed environment. Each room is decorated with original furniture, and has a kingsize bed, air conditioning, private facilities and WiFi.



Cavas Lodge

Deluxe



Located 30 minutes south of Mendoza, Cavas is a luxurious and elegant Wine Lodge with 18 rooms spread out through the vineyards. All rooms and villas are extremely spacious and comfortable with kingsize beds, private terrace, plunge pool and views of the mountains. Membership of Relais et Chateaux promises world-class service and cuisine at the lodge's restaurant, and there is also a spa offering a variety of treatments with vine and grape extracts.

PRICES

2 SHARING SEASONS	3 NIGHTS INCLUDING TRANSFERS	EXTRA NIGHT
MENDOZA		
<u>FINCA ADALGISA</u> All Year	£508	£143
<u>CAVAS LODGE</u> All Year	£1115	£193

Prices are per person in a Standard Room for double occupancy including accommodation and breakfast, tax, service charge and transfers. Prices for Triple room, Single Room and child fares available on request. Supplement available on request.

Additional Hotels and Wineries: Hyatt, NH Cordillera, Aconcagua, Club Tapiz, Posada Salentein, Huentala

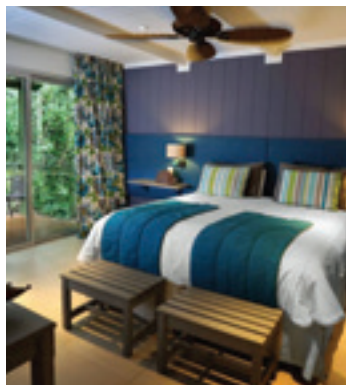




Aerial view of Iguazu Falls

The Iguazú Falls are a truly extraordinary sight : Vast torrents of water thunder over a natural fault in more than 250 separate cascades to create an awe-inspiring spectacle. The Brazilian side offers a panoramic view while the Argentine side has three long walks on wooden walkways which take you through the forest, and above and below the waterfalls. Both sides have boat trips for an exhilarating, close-up (and very wet) experience. It is best to explore both sides of the falls, and take time to see the falls from all sides, and learn about the rainforest ecosystem, its flora and fauna.

La Cantera Lodge Tourist Sheraton Hotel First



Located in the forest outside of the town of Puerto Iguazú, and 15 minutes from the falls, La Cantera Jungle Lodge has rooms distributed in a series of bungalows connected by raised walkways. The rooms are spacious and well appointed, with a balcony looking out into the forest as well as private facilities and air conditioning. The hotel has a restaurant and a swimming pool with a terrace area for relaxing.



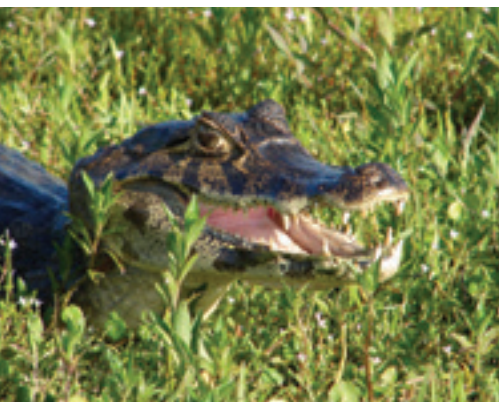
Set within the Iguazú National Park, the Sheraton hotel is a large building with spectacular views of the falls. Half of the rooms face towards the falls, and the other half face the rainforest behind the hotel. Its location within the Park gives guests privileged access to the trails around the falls. The hotel has two restaurants and lounges, a swimming pool which shares the stunning views of the falls, a fitness centre and sauna.

Additional Hotels: Das Cataratas (Brazil), Panoramic Iguazu, Iguazu Gran Casino, Esturion, Loisuities, Yacutinga, Aguape Lodge

IBERÁ WETLANDS & JESUIT MISSIONS

The Iberá Natural Reserve is the largest protected area in Argentina, a mix of swamps and lagoons which makes up the second largest wetlands in South America. Fed only by rainwater, the swamps are shallow and full of vegetation, providing a habitat for a huge array of wildlife. The boat excursions often go in search of marshland deer, maned wolf, caiman, otters, and many species of birds. The nearest airport is Posadas.

In the 17th Century the Jesuits established peaceful settlements of Guaraní Indians in an effort to convert them to Catholicism, educate and protect them from Portuguese slave hunters. The ruins of these missions, restored to show the European architecture and ornate stonework of the churches and cloisters, are spectacular evidence of this colonial history.



Puerto Valle Lodge

Located 55km from Posadas, Puerto Valle is easily accessible while standing on the edges of both the Iberá wetlands and the Paraná River. All 13 rooms are spacious, with private facilities and views of the river. The restaurant uses ingredients grown in the organic garden, and there is also a library and drawing room for relaxing. Activities include boat trips on the river and wetlands, as well as horse riding and forest walks on the property.



PRICES

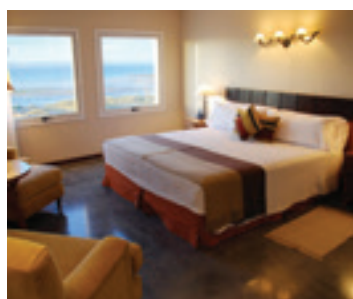
2 SHARING SEASONS	3 NIGHTS INCLUDING TRANSFERS	EXTRA NIGHT
<u>IGUAZU - LA CANTERA</u>		
All Year	£327	£61
<u>IGUAZU - SHERATON</u>		
All Year	£617	£158
<u>IBERÁ WETLANDS</u>		
<u>PUERTO VALLE*</u>		
All year	£615	N/A

Prices are per person in a Standard Room for double occupancy including accommodation and breakfast, tax, service charge and transfers.
*Puerto Valle Lodge includes accommodation, full board, excursions, transfers to/from Posadas Airport, tax and service.



PENÍNSULA VALDÉS

The coastline of Peninsula Valdes is home to a remarkable variety of wildlife. Each year, Southern right whales come between June and December to breed, particularly in October and November, joining elephant seals, sea lions, Magellanic penguins and occasionally Killer whales. There are also large numbers of seabirds such as petrels, albatrosses and cormorants. All this incredible wildlife can be admired during boat trips into the bay, or walking excursions on the peninsula. The main town, Puerto Madryn, has a variety of accommodation, while the closest airport is in Trelew in Welsh Patagonia.



Territorio First

Located just outside the town of Puerto Madryn, the Territorio hotel is a modern construction with 36 comfortable rooms. Every room has a stunning view over Golfo Nuevo Bay to Peninsula Valdes beyond. The hotel also has a spa and lounge bar, but no restaurant.

Additional Hotels: Peninsula Valdes, Tolosa, Solar de la Costa

SALTA & THE NORTHWEST

Salta and its surroundings are characterised by harsh and rugged desert landscapes full of deep gorges, wonderous rock formations and vivid earth colours. The dramatic scenery has much in common with the bordering Bolivia and Chile, with llamas, ancient ruins, Salt Flats and indigenous weaving communities. There is colonial history here too, with well preserved Spanish churches and cathedrals, town-houses and leafy squares.

5 days • 4 nights

Day 1 Arrival in Salta and transfer to your hotel. Guided tour of the city with a magnificent panoramic view of the Lerma Valley from the top of San Bernardo hill and visiting the neo-classic Cathedral and the Historic Museum of the North, with exhibits of sacred art and rooms dedicated to the grand families of Salta. The Plaza 9 de Julio is an elegant colonial main square with gardens and lined with cafes, ideal for people watching. The 18th Century El Cabildo is the old town hall now turned into a historical museum. Continue out of town to the village of San Lorenzo and its artisan market. (B)

Day 2 Full day tour, travelling south along the Lerma Valley passing historic towns to reach curious rock formations at the gorge of Quebrada del las Conchas. Continue to Cafayate and visit vineyards famous for wine made from the Torrontes grape. Return to Salta and overnight. (B)

Day 3 Journey north to the Tastil Ruins and visit San Antonio de los Cobres ancient mining town. Continue to the immense Salt Flats at Salinas Grandes, where the thick crust of salt appears as a vast expanse of shining white desert. We pass through the Humahuaca Gorge to arrive at Purmamarca, with its enchanting adobe houses and amazing views of the Hill of Seven Colours. Overnight in Purmamarca. (B)

Days 4-5 Today we travel to the pre-Inca fortification of Pucara de Tilcara, across the Tropic of Capricorn, admire the colourful hills of Pollera de la Coya, and visit Uquia church with paintings of Arcabucero Angels. At Huamahuaca we have lunch and visit the church and the Indian Independence Monument. Continue on the scenic route to Jujuy passing the colourful Palette del Pintor, where we visit the city before returning to



Salta travelling along Route 9 flanked by abundant subtropical vegetation. Overnight in Salta. (B)

Day 5 Time at leisure to explore or, if there is time before your flight, visit the MAAM Museum of Anthropology housing Indian artifacts including mummies. There are many cultural events, art shows, exhibitions and music festivals, above all, the April Culture Festival. Transfer to the airport. (B)

Hotels: Solar de la Plaza, Ayres, House of Jasmynes, Legado Mitico

PRICES

2 SHARING SEASONS*	3 NIGHTS INCLUDING TRANSFERS	EXTRA NIGHT
PENINSULA VALDES		
TERRITORIO HOTEL		
All Year	£280	£113

*Prices are per person in a Standard Room for double occupancy including accommodation and Breakfast, tax, service charge and transfers. *Prices for Triple room, Single Room on request.*

ALL YEAR	5 DAYS • 4 NIGHTS
SALTA & NORTHWEST	
First Class	£852
Tourist Class	£499

Prices are per person based on two sharing a double room at a First Class hotel, transport, transfers, guided excursions with English-speaking guide. Breakfast, tax, service charge included.

PATAGONIA

EL CALAFATE

El Calafate is located on the shores of Lago Argentino, in southern Patagonia. It is the starting point for excursions to the main glaciers of the area such as Perito Moreno, Upsala and Onelli. For the more adventurous it provides access to El Chalten for Cerro Torre and Mount FitzRoy, Argentina's premier trekking areas. These small towns of double-pitched roofs and tourist facilities, always offer a friendly welcome to visitors.

CALAFATE & GLACIERS

4 days • 3 nights

Day 1 Arrival in Calafate and private transfer to the hotel Xelena Suites (First) or Esplendor (Tourist) for three nights. Take a stroll in the village. (B)

Day 2 Full day excursion by shared regular coach to the Perito Moreno Glacier. (B)

Day 3 Half day excursion on a regular, local boat service on Lago Argentino to the Upsala and Onelli Glaciers. (B)

Day 4 Private transfer to the airport. (B)



Perito Moreno Glacier



The rugged surface of the glacier

Perito Moreno Glacier

Perito Moreno Glacier is located 80 kilometres from Calafate on the road to Los Glaciares National Park. The first part of the journey crosses barren Patagonian steppe, but on reaching the national park the vegetation changes abruptly into forest dotted with shrubs and occasionally, the intense red of the notro, the typical flower of the Andean Patagonia. Los Glaciares National Park was created in 1937 to preserve an area of continental icefields and glaciers, declared a World Heritage Monument by UNESCO in 1981. The main attraction is

the Perito Moreno glacier, slowly eroding a valley between two hills on the side of a long narrow lake, so that the opposite bank is an ideal position to stand on land and view the glacier close to the massive front, measuring some five kilometres in width and 60 metres in height. At times the glacier reaches the opposite bank of the lake and blocks the flow of water so you can watch the water break the ice. The sight of huge pieces of ice breaking off with a roar, then floating away as icebergs is truly unforgettable.



Day cruise on Lago Argentino

Glaciers & Lakes Cruise

Depart from Calafate to Puerto Banderas, boarding a state of the art vessel to cruise on Lago Argentino, in Los Glaciares National Park. Sail on the lake, reaching the magnificent Upsala Glacier, the largest glacier in the region, some nine kilometres wide and 50 km long, fed by numerous tributaries from the southern continental icefield. Enter the Upsala channel navigating among giant icebergs, and sail around the 6km long front and observe its 60m high walls. We sail past the Spegazzini Glacier, standing on a tranquil part of the lake, with beech trees to one side and ice-covered mountains to the other. In the afternoon return to the hotel.



Optional to trek on the glacier

View of the Perito Moreno Glacier from a distance

Xelena Suites First

Xelena Suites has 71 luxury suites overlooking the Lake Argentino, all with fine furnishings and private facilities. The hotel also has a spa and an indoor-outdoor heated swimming pool overlooking the lake, perfect for relaxing at the end of the day.



Indoor heated swimming pool at Xelena Hotel





Fitz Roy



Room at Eolo

Eolo Lodge *Deluxe*



Located thirty minutes away from El Calafate, Eolo is a luxury lodge that embodies the spirit of Patagonia. All of its 17 suites are simply but beautifully furnished, with breathtaking views of the surrounding landscape. As a member of Relais et Châteaux, the lodge prides itself on world class service and cuisine.

Your four day programme includes: Full board, transfers, non-alcoholic drinks & activities: trekking, mountain bikes, bird watching, and stargazing.



Additional Hotels: Altos de Calafate, Kosten Aike, Imago Hotel & Spa, Design Suites, Mirador del Lago Kau Yatun, Los Sauces, Los Notros, Sierra Nevada, Estancia Alice El Galpon, Terrazas del Calafate



Lounge with a view

Los Alamos Hotel *First*

Situated in a large area of park and gardens by the shore of Lago Argentino, near downtown Calafate. All 144 rooms are comfortably furnished in country style and have private bathroom, minibar, safe deposit box and cable TV. The hotel has an international restaurant with live entertainment, a reading room, an indoor swimming pool and a spa.

Esplendor *Tourist Superior*

Located in the centre of the charming village of Calafate, the hotel has a marvelous view of the pristine Argentino Lago. Each room features a queen-size bed and other amenities include cable TV, telephone, mini bar, and in-room safe. The private bathroom is stocked with toiletries and a hair dryer.

EL CHALTEN & FITZROY



Trekking at Fitzroy

From a scenic point of view Los Glaciares is one of the most impressive national parks in South America. The vast reserve that protects around 2,300 square miles of Patagonian Andes includes more than 40 major glaciers. The northern section of the park is dominated by the world-famous Fitzroy Massif, which rises 6,000 feet from the glaciers at its base. The mountains around the tiny village of El Chalten make it an essential stop-off for adventurous travellers. A variety of walks of different durations and degrees of difficulty are possible from here.

Estancia La Quinta *First*

Situated at the foot of Cerro Torre and Fitz Roy in Los Glaciares National Park, about 1 km from El Chalten, Estancia La Quinta is a one-hundred-year-old cattle-rearing farm open to guests from October to April. Owned by the original pioneering family, it retains its ancient features offering comfortable rooms with private facilities, heating, large windows with panoramic views, a bar with a log fireplace and a library with a thousand Patagonia-themed books.

PRICES

2 SHARING	3 NIGHTS INCLUDING TRANSFERS	EXTRA NIGHT
SEASONS		
CALAFATE & GLACIERS		
Tourist - Esplendor Hotel	£431	N/A
First - Xelena Suites Hotel	£768	N/A
XELENA SUITES		
Jan-Mar; 16 Oct-30 Dec	£328	£101
Apr	£290	£88
May-15 Oct	£208	£61
EOLO*		
All Year	£1019	N/A
LOS ALAMOS HOTEL		
Jan-Mar-15 Oct-31 Dec	£344	£106
Apr-Sep-14 Oct	£243	£73
May-Aug	£212	£62
ESPLENDOR		
All year	£150	£59
ESTANCIA LA QUINTA*		
All year	£631	£47

Prices are per person in a Standard Room for double occupancy including accommodation, tax, service charge, breakfast and transfers to/from Calafate.
*Eolo & La Quinta include transport to/from El Calafate, daily guided excursions with specialist guides.



Estancia La Quinta

TIERRA DEL FUEGO - USHUAIA



Located at the Southern end of South America, Ushuaia is a small port town perched on the edge of the Beagle Channel, the departure point for expedition cruises into the icy waters of Tierra del Fuego and the Antarctic Peninsula. The town is surrounded by National Parks for excellent walking, wildlife watching and a ride on the Southern Fuegian Railway.



Los Naranjos Tourist

Located in central Ushuaia, Los Naranjos offers comfortable rooms with panoramic views of the surrounding Andean mountain range, the city or the Beagle Channel. All rooms have private facilities, free WiFi, and safe deposit box. The restaurant serves traditional Andean food as well as international dishes.

Arakur Resort Deluxe

Situated on a natural balcony 800 metres above Ushuaia, Arakur Resort offers contemporary luxury rooms surrounded by panoramic views of the mountains, the bay and Cerro Alarken nature reserve. There is a spa with indoor and outdoor pools and hot tubs, and the restaurant serves excellent international cuisine.

PRICES	2 SHARING	3 NIGHTS INCLUDING TRANSFERS	EXTRA NIGHT
All Year			
USHUAIA HOTELS			
<u>LOS NARANJOS</u>		£294	£70
<u>ARAKUR</u>		£663	£193

Prices are per person in a Standard Room for double occupancy including accommodation and breakfast, tax, service charge and transfers.

PATAGONIA EXPEDITION CRUISE

Enjoy the relaxed atmosphere and stunning views onboard the M/V Stella Australis. With room for 210 passengers, accommodation is in comfortable cabins with large windows and heating. Cruises include daily excursions with naturalist guides, and wildlife watching.

USHUAIA ROUND TRIP

Australis - End of the World Cruise • 3 nights

Day 1 We board the ship in the afternoon for the Captain's reception.

Day 2 Arrive in Garibaldi Fjord where we hike through forest up to a glacial waterfall to enjoy the views.



In the afternoon we navigate the Beagle Channel to reach Pia Fjord, disembarking for a short hike to Pia Glacier. Later we continue our voyage along the Beagle Channel and through the impressive Glacier Alley.

Day 3 Sail through Murray Channel to Cape Horn, where we land (weather permitting). In the afternoon, we will go ashore at historic Wulaia Bay, where Charles Darwin landed in 1833.

Day 4 We disembark at Ushuaia in the morning to continue our journey.



PRICES

SEASONS - 2 SHARING CABINS	LOW	HIGH
USHUAIA ROUND TRIP		
Standard Cabin B	£1196	£1488
Superior Cabin A	£1554	£1877
Deluxe Cabin AA	£1623	£1958
USHUAIA - PUNTA ARENAS		
Standard Cabin B	£1093	£1505
Superior Cabin A	£1428	£1899
Deluxe Cabin AA	£1492	£1981
PUNTA ARENAS - USHUAIA		
Standard Cabin B	£1326	£1747
Superior Cabin A	£1732	£2223
Deluxe Cabin AA	£1810	£2325

High: Nov-17 Mar; Low: End March & Oct
Price per person, Includes transfers, cabin of your choice, full board, open bar, all transport and guided excursions.

