

# ECUADOR & GALAPAGOS

**web** Photographs and information: [veloso.com/ecuador](http://veloso.com/ecuador)

Ecuador, named after its position on the Equator, boasts Amazon, Andes, Pacific coastline and the Galápagos Islands. This stunning archipelago, Darwin's living laboratory of evolution, provides unique opportunities for viewing wildlife at close range.



*ECUADOR*

Ecuador is composed of four distinct regions : the Amazon basin to the east, the Andean highlands running down the centre of the country, the Pacific coastline to the west, and the archipelago of the Galapagos Islands 600 miles out into the Pacific Ocean. There are many outdoor markets, country haciendas, churches and religious ceremonies, making it a pleasure to observe the character of the people. The seldom visited coastline is home to wild beaches, while the small Inca archaeological site at Ingapirca in the south is evidence of a long history and ancient regional connections with Peru.

## Galápagos Islands

The Galapagos is an archipelago of volcanic islands, distributed on either side of the equator in the Pacific Ocean, 600 miles from mainland Ecuador. This isolation, and the distance between the islands themselves, led to the evolution of species on separate islands, but with marked differences. Darwin's observation of this process led him to his famous scientific discoveries. The wildlife is unafraid of people, to the point that one can get remarkably close to birds and iguanas, and swim with playful sea lions.

### *Andean highlands*

Colourful Indian markets in remote villages rest amongst Andean landscapes of soaring cones of snow-capped volcanoes. The towns and people retain a distinctive identity with fascinating blends of Inca and colonial influences

## Amazon Rainforest

The legendary Amazon is home to hundreds of species of mammals, thousands of birds and insects, many endemic to Ecuador. Ancient trees, some over 400 years old, tower above, entangled with thick lianas and supporting a huge variety of bromeliads. Wildlife apart, this is also a cultural experience, where we meet local communities who share their intimate knowledge of their surroundings, the medicinal properties of plants and their unique relationship with the jungle.

## CONTENTS

HACIENDAS & QUITO	123-124
ANDEAN EXCURSIONS	125
<u>PICHINCHA TOUR</u>	126
<u>BELLAVISTA TOUR</u>	127
<u>PRIMAVERA TOUR</u>	128 - 129
GALAPAGOS CRUISES	130 - 139
AMAZON	140 - 141



# QUITO & HACIENDAS



Hacienda Pinsaqui

## HACIENDAS & HORSERIDING

4 days • 3 nights

To step into **Hacienda Zuleta** is to step back in time, where you can experience four centuries of Ecuadorian history steeped in Spanish and Ecuadorian tradition. Located in the mountains north of Quito, surrounded by the natural beauty of the Andes, the seventeenth century hacienda still has a working farm set in 4000 acres of grounds, complete with its own vegetable gardens, dairy farm and trout pond and riding stables with over 100 horses. Decorated with antique furniture and typical Ecuadorian weavings, every guest room has a fireplace, with cosy living and reading rooms. Home cooked meals are served every day using the farms' own produce.

Horse riding is a speciality at Zuleta, with lessons available for complete beginners through to advanced level. Other activities can include mountain biking, walking trails in the mountains to appreciate the beautiful scenery, hiking nearby volcanoes, visits to the ancient archaeological site of Caranqui, cooking with the Hacienda's chef, traditional Ecuadorean embroidery, and bird watching for Andean Condors.

**PRICES** for 4 days • 3 nights

NO OF TRAVELLERS	1	2
<b>HACIENDA ZULETA</b>		
All year	£1367	£817

Prices per person including private transport to/from Quito, all meals, activities at the Hacienda. Guided excursions are at extra cost.



Hacienda Zuleta

## DEVIL'S NOSE RAILWAY

*The Avenue of Volcanoes*

4 days • 3 nights

**Day 1** Depart south from Quito along the Avenue of the Volcanoes, enjoying the incredible landscape of snowcapped mountains and volcanoes, with Andean Condors circling above them. Stop and visit Cotopaxi National Park. Continue to Riobamba, a colourful drive passing several indigenous villages, and overnight. (L, D)

**Day 2** Early start to board the Devil's Nose "locomotora" (rail-bus) from Alausi to Sibambe and back. Descend this impressive rail segment admiring dramatic

mountain scenery. Continue to Cuenca by road with a visit to **Ingapirca Inca ruins**, Ecuador's largest archaeological site. Spend two nights at Hotel Santa Lucia. (B,L)

**Day 3** Full day visit to **Cajas National Park**, a high altitude landscape dotted with lagoons, streams and native flowers. Traditional lunch at a local hacienda. (B,L)

**Day 4** Morning tour of Cuenca, a UNESCO World Heritage city. Visit the colonial cathedral and main square, have lunch before your onward journey. (B,L)



Cuenca's Cathedral

**PRICES** for 4 days • 3 nights

NO OF TRAVELLERS	1	2
<b>AVENUE OF VOLCANOES &amp; DEVIL'S NOSE</b>		
All year	£1112	£689

Prices per person including English-speaking guide & excursions including entrance fees, private transfers, meals as shown (drinks are additional), accommodation, train tickets. Departs daily except Sundays.



Devil's Nose Railway



# QUITO

web [veloso.com/quito](http://veloso.com/quito)

Quito is located on a plateau at the foot of Pichincha volcano. Colonial architects built the formidable churches, monasteries and mansions which caused the city to be designated a World Heritage Site by UNESCO. Visit St. Augustine Convent & the Parliament Buildings, whose stone mural depicts the history of Ecuador. The main square is flanked by the Cathedral, the Presidential Palace, Municipal Building and the Archbishop's Palace. Nearby the church of San Francisco is one of the great religious buildings of the New World, Baroque influenced by Moorish style.

## Excursions available in Quito:

- **City Tour** of the colonial centre, with narrow cobbled streets, large squares, Spanish architecture and impressive Baroque churches.
- **Cablecar Ride** up the Pichincha Volcano, viewing Quito from above
- **'Middle of the World' Monument** and Museum of Equator.
- **Walking Day Trips** outside the city, including: Cotopaxi National Park, Antisana Volcano Reserve, Cuicocha Crater Lake, Page 125

## Additional hotels in Quito:

*Patio Andaluz, Marriott, Swiss, Dan Carlton, Nü House, Mansion del Angel, Hilton Colon, Casa Aliso, Plaza Grande*

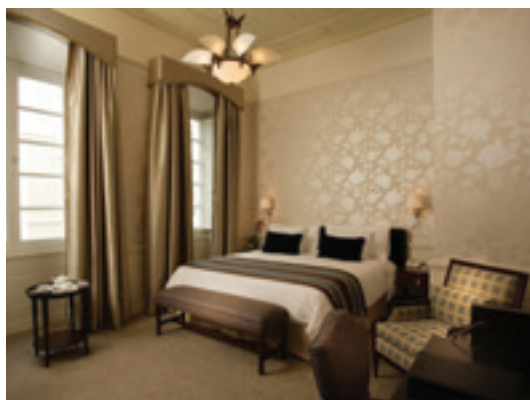


Quito

## QUITO HOTELS



Casa San Marcos



Casa Gangotena

## Casona de La Ronda First

This delightful 22 room hotel has been converted from an original Colonial townhouse. It is an oasis of tranquility, located on the pedestrian La Ronda street in the centre of Old Quito and close to many bars and restaurants. The rooms are comfortable and decorated with fabrics and patterns from local communities. The hotel also has a small lounge and fireplace, and serves local cuisine and Ecuadorean wines.

## Mercure Tourist superior

Located on the main avenue Amazonas, the centre of Quito's office and business centre, close to the historic downtown, the Grand Mercure Alameda is a modern business-style hotel offering a number of quality amenities. Its rooms are tastefully decorated, all with balcony and private bathroom. The hotel restaurant serves buffet breakfast, as well as Ecuadorean and International cuisine. This is a good value hotel in the centre of the city.

## Casa San Marcos Boutique

Almost hidden away in the Old Town of Quito, this restored mansion houses a hotel which is part art gallery, part restaurant. Its spacious gallery has many pieces by national and international artists. The six rooms are comfortably and stylishly furnished, all with private bathroom. The hotel also has excellent views of the 'Panecillo' one of Quito's great landmarks. The hotel restaurant serves Ecuadorean and Mediterranean cuisine.

## Relicario First

This historic house dates back to 1705, but recently re-opened its doors as a boutique hotel with 18 comfortable rooms. Located close to the Plaza Independencia, the house has preserved its original details, while adding all the modern amenities you would expect from a high class hotel. The furniture is made by Ecuadorean artisans, and many original paintings hang in the public areas. The hotel also has its own coffee shop and restaurant.

## Casa Gangotena Deluxe

Casa Gangotena is a Colonial mansion located in the heart of Old Quito, right on Plaza San Francisco. It has been recently converted into a sumptuous deluxe boutique hotel, and is one of the finest in Quito. The hotel's 31 rooms are a sophisticated meeting of classic architecture, high ceilings, fine antique furniture, and modern amenities. The hotel restaurant serves Ecuadorean-influenced international cuisine, made from the finest local ingredients, served by the most diligent of staff.

## Plaza Sucre Tourist

Located in the historic downtown centre of the city, the Plaza Sucre is very good value, although the rooms at the front can be noisy at times. Decorated in a traditional style, the hotel has 25 comfortable rooms with private facilities, modern amenities and free WiFi. Breakfast is served on the rooftop patio with views of the city.

## Rincón Puembo

*First*

The Rincon de Puembo is located 20 minutes from Quito's new airport, in the small town of Puembo, making it ideal for travellers having to overnight in between flights. The accommodation is all found in a replica colonial-style street, with wonderful traditional touches. Perfect for relaxing by the pool and taking a rest stop from your Ecuadorean itinerary.



Maria Segura is our main guide in Quito

## PRICES

2 SHARING SEASONS*	3 NIGHTS INCLUDING TRANSFERS	EXTRA NIGHT
<b>RINCON PUEMBO</b> All Year*	N/A	£62
<b>CASONA DE LA RONDA</b> All Year*	£285	£67
<b>CASA SAN MARCOS</b> All Year*	£337	£84
<b>CASA GANGOTENA</b> All Year*	£656	£191
<b>GRAND MERCURE</b> All Year*	£248	£55
<b>RELICARIO</b> All Year*	£276	£64
<b>PLAZA SUCRE</b> All Year*	£225	£47

Prices are per person in a Standard Room for double occupancy including accommodation, breakfast, transfers to/from Quito Airport.  
\*Price for Triple room, Single Room, Christmas, New Year, National holidays and child fares available on request.



# ANDES

## Cotopaxi

Cotopaxi National Park is an ecological sanctuary of 36,000 hectares surrounding the highest active volcano in the world, and is a paradise for walkers who enjoy the high altitude landscape. Located only two hours from Quito, Cotopaxi is an ideal area for nature lovers who may see llamas, wild horses, deer, rabbits and frogs, as well as the various species of birdlife, including the majestic Andean condor. We can offer full day tours to Cotopaxi from Quito, as well as overnight stays at Hosteria Runtun, which also includes a visit to local markets.

## Antisana & Termas de Papallacta

**Day 1** Depart eastward from Quito through the verdant valleys of Tumbaco and Puenbo. At the village of Píntag, the eastern range of the Andes rises towards the majestic paramo of Antisana. This private reserve starts at cloudforest level, dominated by bamboos and bromeliads, past the amazing lava flows of Antisana Volcano. The plateau is crowned by La Mica Lake which teems with bird life: caracaras, lapwings, Andean condos and hummingbirds. Continue to the hacienda and hike with the snows of

Antisana as a pristine backdrop. After lunch in the Protected Area, drive on to the exclusive Termas de Papallacta Resort and Spa. Visit the paramo and the Andean forests of Papallacta. (L,D)

**Day 2** This morning there is ample time to relax in the thermal baths. There are various pools of different temperatures in a beautiful natural surrounding. After enjoying the wonderful healing properties of the thermal waters return to Quito in the afternoon. (B)



Termas de Papallacta



Otavalo Market

## Indigenous Markets & Otavalo

The Andean valleys to the north and south of Quito are a landscape of snow covered mountains, lakes and terrace farmland. The colourful village markets are famous for their fine handicrafts and bustle with local people trading farm produce, cloth and household goods. The most famous of these is the Indigenous market of Otavalo, which dates back to pre-Inca times and is well-known for its textiles. Its narrow cobbled streets fill with Otavalo locals in their distinctive costume of blue poncho, white trousers and long, braided hair.

2 days • 1 night / Friday

**Day 1** From Quito we drive along beautiful valleys past dairy farms and rose plantations to the small town of Calderón. Next we visit Peguche and San Antonio de Ibarra to see local wood carving, and continue to Cotacachi, a centre of leather working. Overnight at one of the haciendas near Otavalo. (L,D)

**Day 2** Visit the colourful and bustling market in Otavalo. There is ample time to shop and wander around. Return to Quito in the afternoon. (B)



Haciendas Cusin near Otavalo

## Cloudforest

**Full Day Tour** - Two hours northwest of Quito we reach the valley of Tandayapa and the Bellavista Lodge cloudforest eco-system. Enjoy a walk with your naturalist guide pointing out many species of plants including several with medicinal properties; and help you to spot and identify birds. You can see several species of hummingbirds, butterflies, reptiles & mammals. Later in the afternoon return to Quito. (L)

**Bellavista Lodge** The lodge is all in wood with simple rooms with private facilities and forest views. The Dome restaurant also has panoramic views.



## Bellavista Lodge

2 days • 1 night

**Day 1** Transfer for 2 hours to Bellavista Lodge and walk the pristine trails with your naturalist guide to reveal the cloud forest's diverse vegetation and variety of birds. Expect trogons, colourful tanagers and the Plate-billed Mountain-Toucan. Afternoon free to explore. (B,L,D)

**Day 2** Early morning is the best time to discover the great variety of birds that live in these rich forests. Guided walk of the surrounding cloudforest and visit the Hummingbird sanctuary. After lunch return to Quito. (B, L)

### PRICES

ALL YEAR	2 DAYS • 1 NIGHT	
NO OF TRAVELLERS	1	2
<b>COTOPAXI</b>		
Full Day Tour	£234	£149
<b>ANTISANA &amp; TERMAS DE PAPALLACTA</b>		
Private	£451	£275
<b>OTAVALO MARKET</b>		
Private	£420	£264
<b>CLOUDFOREST</b>		
<b>BELLAVISTA LODGE</b>		
Shared Coach	£278	£229
Full Day Tour	£125	£108

Prices per person including transport to/from Quito, accommodation and meals as shown. English-speaking guide/Naturalist Guides at Bellavista and guided excursions as described are also included. Transfers to Bellavista are in shared transport but private transfers can be arranged at additional cost.



# RAINFOREST AND THE ENCHANTED ISLES

## The Pichincha Tour

### 14 night itinerary:

Quito - 2 nights

Amazon - 3 nights

Quito - 2 nights

Galápagos Cruise - 7 nights

web [veloso.com/pichincha](http://veloso.com/pichincha)



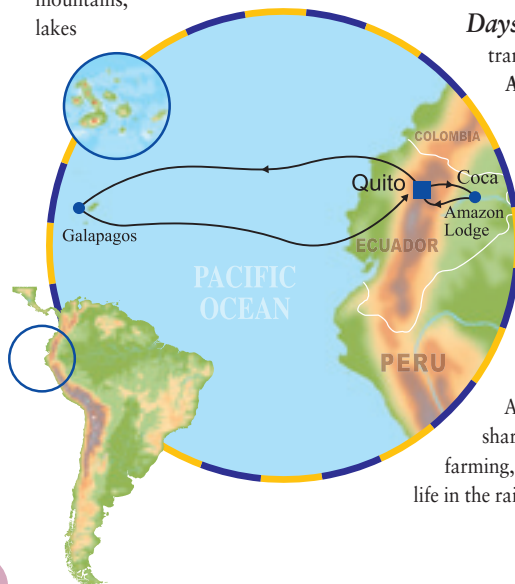
Experience the vastness of the Amazon rainforest, Days 3 to 6

**Days 1-2** Departure flight to Quito on Wednesday (Tourist) or Sunday (First), arriving the same evening. The next day we visit Otavalo, embracing an area of snow-capped mountains, lakes

and terraced farmland. Visit the local tourist market where men and women with long plaited hair, dressed in their traditional clothes, sell all types of weavings, tapestries and handicrafts. (B)

**Days 3-5** Flight to Coca and transfer by canoe to your Amazon Lodge, Napo (First)

Yasuni (Tourist) see page 133, staying for 3 nights. We paddle in canoes along narrow creeks, observe the exuberance of vegetation in primary rainforest and hike under the dense tree canopy. We visit a local Amazon village where we meet people of the Anangu community, who share their culture, knowledge of farming, medicinal plants and way of life in the rainforest. (B,L,D)



Visit a tropical paradise to observe exuberant vegetation and friendly wildlife and wonder at the mysteries of life on earth. This tour includes the Amazon rainforest, the stunning Galápagos Islands, and an insight into the colonial charm of Quito and surrounding mountain countryside. A relaxing tour of beautiful landscapes, exuberant rainforest, diverse wildlife, and local markets.

**Days 8-14** Flight to the Galápagos Islands where Darwin observed the wildlife that would lead him to his theory of evolution by natural selection. Basking marine iguanas, waved albatrosses, blue and red footed boobies, giant land tortoises, and friendly sea lions abound. We cruise for 7 nights with guided excursions every morning and afternoon, walking, swimming and snorkelling, accompanied by expert Naturalist guides who explain all about the diverse wildlife and delicate ecosystems of the islands. First Class cruises on M/V Eric or Letty (Iguana deck cabin) page 136, and Tourist Class cruises on M/V Cachalote as shown on page 139. (B,L,D)

**Day 15** Return flight to Guayaquil connecting with your flight home, arriving the following day, Day 16. (B)

*The Pichincha Tour departs Wednesday (Tourist), or Sunday (First), returns Thursday or Monday, INCLUDING: 14 nights accommodation, all flights (1 overnight), all transfers plus guided excursions, transport and meals (B,L,D) as shown on the itinerary. Please see pages 190 - 193 for further details of what is included.*

**Days 6-7** Return to Quito for 2 nights. Next day, we tour the old part of the city, San Francisco square, Presidential Palace, churches in colonial architecture and we visit the Gold Museum. (B)

#### PRIVATE INDIVIDUAL TOUR GUIDELINE PRICES

	Tourist			First		
	1 Single Traveller	Travelling Together Double	Own Room	1 Single Traveller	Travelling Together Double	Own Room
<b>PICHINCHA Tour</b>						
1Jan-30Jun, 6Sep-15Dec	£6653	£4894	£6186	£8921	£5935	£8634
1July-5Sep, 16Dec-31Dec	£6953	£5194	£6486	£9221	£6235	£8934
<b>BELLAVISTA Tour</b>						
1Jan-30Jun, 6Sep-15Dec	£6927	£5126	£6282	£8461	£5562	£7825
1July-5Sep, 16Dec-31Dec	£7227	£5426	£6582	£8761	£5862	£8125

GUIDELINE TOUR PRICES are all per person, subject to availability, as all services are booked when you pay your deposit. Please refer to our website [veloso.com](http://veloso.com) for current prices and any special offers available. To obtain a Guaranteed Price for your travel dates, please call 020 8762 0616, email [travel@veloso.com](mailto:travel@veloso.com), or contact our appointed travel agents. Prices for Special Events, New Year's Eve, Christmas, Easter on request.

FLIGHTS on IBERIA or LAN departing from London and UK Airports, Internal Flights and Taxes, are included. UPGRADE to Business Cabin seat add: £1805 in High Season / £2105 in Low Season

HOTELS used, descriptions and photographs on our website, [veloso.com/pichincha](http://veloso.com/pichincha) & [veloso.com/bellavista](http://veloso.com/bellavista)

**TAILOR-MADE SERVICE:** Please enquire for a personalised itinerary to fulfil your individual requirements. We can combine hotels, change route, excursions and we can offer triple rooms, suites and De Luxe Hotels.



# ANDEAN LANDSCAPES AND THE ENCHANTED ISLES

Explore the rich culture and dramatic mountain landscapes of the Andes and the fascinating Galápagos Islands, teeming with friendly wildlife. We visit colonial cities and mountain villages, surrounded by dramatic snow-capped volcanoes and ride a train along a steep ravine. Browse through local markets where people display their produce, antiques and intricate weavings.

**Days 1-3** Departure on Sunday (First) or Tuesday (Tourist) on a daytime flight to Quito, staying for 3 nights. The next day we take a tour through scenic streets of the historical part of the city, admiring the colonial squares, architecture, museums and an exquisite Baroque-style church. On Day 3 we journey into the mountain countryside to visit the village of Otavalo and its market. A colourful affair, people dressed in traditional clothing sell handcrafts. We also visit the surrounding villages to see weavers at work. (B)



*Avenue of Volcanoes starting in Quito, Day 4*

**Day 7** Journey into the mountains through the Cajas National Park, stopping on the way to walk, enjoy the scenery dotted with lagoons, and have a typical lunch at a small hosteria. Continue to the coastal city of Guayaquil, where we take a short tour and stay overnight. (B,L)

**Days 8-14** Flight to the Galápagos and cruise the Island Archipelago for 7 nights with guided excursions every morning and afternoon to walk on the islands, swim or snorkel, and to see the wildlife up close.

First Class cruises on M/V Eric or Letty cruisers (Iguana deck cabin) page 136 and Tourist Class cruises on the M/V Samba page 139. (B,L,D). On Day 15, fly back to the mainland and connect with the overnight flight home, arriving Day 16.

***The Bellavista Tour*** PRICES PAGE 126. Departs Sundays (First) or Tuesdays (Tourist), INCLUDING: 14 nights accommodation, breakfast (B), all flights (1 overnight), transfers, transport, guided excursions & meals as shown. See pages 190 - 193 for details of what is included.

*Wet landing for an excursion ashore on a Galapagos Island, Days 8 to 14*



## *The Bellavista Tour* 14 night itinerary:

Quito - 3 nights  
 Riobamba - 1 night  
 Cuenca - 2 nights  
 Guayaquil - 1 night  
 Galápagos Cruise - 7 nights

web [veloso.com/bellavista](http://veloso.com/bellavista)



*Galapagos Hawks on Floreana Island*



*Traditional dress at Otavalo Market Day 3*

**Day 4** Early morning start along the Andean mountains, stopping at a local hacienda. Visit the indigenous market at Latacunga or Saquisilí, and continue along the Avenue of the Volcanoes, affording views of the towering snow-capped peaks, valleys and villages, arriving at Riobamba to overnight. (B,L)

**Day 5** Transfer to the railway station for a spectacular train journey along mountainsides and precipices on the Devil's Nose Railway. Continue to Cuenca, visiting the fascinating hillside Inca fortress of Ingapirca en route. (B,L)

**Day 6** Tour of the charming colonial city of Cuenca, with its cobbled streets and tree-lined squares, visiting the flower market, the magnificent cathedral, and the Panama hat workshop. (B)



# GALÁPAGOS, AMAZON, VOLCA



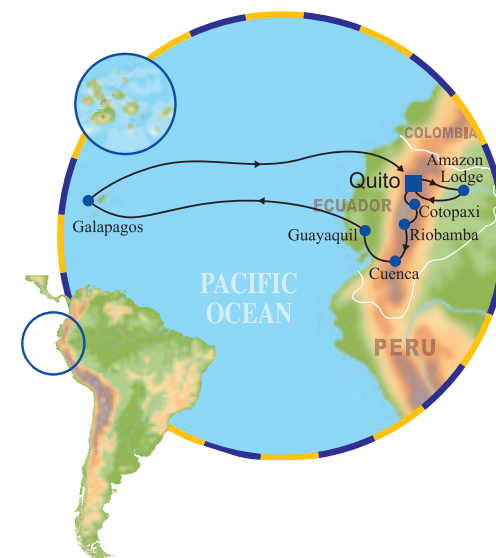
*Welcoming sea lions in the Galápagos Islands, Days 14–20*

**Day 1** Early morning departure flight to Quito on **Saturday** (Tourist Class Tour) or on **Wednesday** (First Class Tour), arriving in the evening of the same day. Transfer to your hotel for 2 nights.

**Day 2** Full day tour out of town, past dramatic mountain scenery to the market in **Otavalo**, where locals sell weavings and handicrafts. Return to Quito to explore the colonial quarter with its

narrow cobblestone streets, numerous beautiful churches, and **Archaeological Museum** housing pre-Colombian ceramics, gold and ancient artefacts. (B)

**Days 3–7** Our day starts with a flight into the **Amazon** and a trip up river to the **Napo Wildlife Centre** (First Class Tour), or **Yasuni Lodge** (Tourist Class Tour) (Please see page 141), located in the peace and tranquility of virgin rainforest in the



Embrace nature in the rainforest, the wildlife of the Galápagos Islands and Andean mountain landscapes. On this tour, you will view wildlife at close range and experience an insight into fascinating cultures, from those who live in jungle communities, to people who survive in little villages by painstakingly weaving their intricate designs on traditional looms.

**Yasuni National Park** and overlooking a lagoon. From here our resident naturalist guides take us on a variety of hikes, both by night and by day, canoeing trips up creeks and exploring the rainforest to observe the exuberant vegetation and the vast, dense tree canopy. It may be possible to visit the parrot clay lick, bursting with the activity of brightly coloured birds. (B,L,D). Flight back to Quito on Day 7, staying for 1 night. (B)

**Day 8** Visit to **Cotopaxi Volcano**, set in the wild páramo of the National Park. Continue through the Andean Mountains, along the so called “Avenue of Volcanoes”, to a village where local weavers demonstrate their skills on the traditional shuttle looms, and onto **Riobamba**, to enjoy its thermal springs, surrounded by mountains. (B,L)

**Days 9–10** An early start to ride on the **Devil’s Nose Railway**, along the impressive switchbacks and through dramatic mountain scenery. We continue south to **Cuenca**, a charming colonial city. On the way we stop at the small Inca archaeological site of **Ingapirca**. Next morning day excursion out of the city to the fertile **Gualaceo valley** and **Chordeleg**, passing remote villages and farmsteads amidst gently rolling hills. (B,L)

**Days 11–12** Morning tour of Cuenca including a Panama Hat factory and **La Inmaculada cathedral**. Next day journey to **Guayaquil** (1 night), stopping for a walk in the **Cajas National Park**. (B,L)

*Cathedral of Inmaculada, Cuenca*





# NOES & MARKETS



Napo Amazon Lodge, Days 3-7

**Days 13-19** Morning flight to the Galápagos Islands for a 7 night cruise, where Darwin observed the wildlife that would lead him to his theory of evolution. Basking marine iguanas, blue and red footed boobies, waved albatrosses, frigatebirds and friendly sea lions abound. Daily morning and afternoon walks along island trails with your Naturalist guide. First Class cruises aboard M/V Eric or Letty in an Iguana deck cabin (p. 136) and Tourist Class cruises aboard the Cachalote motor yacht (p. 139). (B,L,D)

**Day 20** Flight back to the mainland and connect with our return flight home, arriving the following day, Day 21. (B)

*The Primavera Tour departs Saturday (Tourist) or Wednesday (First), returns on Thursday (Tourist) or Monday (First), INCLUDING: 21 days, 19 nights' accommodation and breakfast (B), all flights (1 overnight), transfers, excursions, English-speaking guides, transport and meals as shown. Please see pages 190 - 193 for further details of what is included.*

PRIVATE INDIVIDUAL TOUR GUIDELINE PRICES - Departs Saturday or Wednesday

PRIMAVERA Tour	Tourist			First		
	1 Single Traveller	Travelling Together Double	Own Room	1 Single Traveller	Travelling Together Double	Own Room
1Jan-30Jun, 6Sep-15Dec	£7595	£5777	£7203	£10127	£6645	£9361
1July-5Sep, 16Dec-31Dec	£7895	£6077	£7503	£10427	£6945	£9661

GUIDELINE TOUR PRICES are all per person, subject to availability, as all services are booked when you pay your deposit. Please refer to our website [veloso.com](http://veloso.com) for current prices and any special offers available. To obtain a Guaranteed Price for your travel dates, please call 020 8762 0616, email [travel@veloso.com](mailto:travel@veloso.com), or contact our appointed travel agents. Prices for Special Events, New Year's Eve, Christmas, Easter on request.

FLIGHTS on IBERIA or LAN departing from London and UK Airports, Internal Flights and Taxes, are included. UPGRADE to Business Cabin seat add: £1805 in High Season / £2105 in Low Season

HOTELS used, descriptions and photographs on our website, [veloso.com/primavera](http://veloso.com/primavera)

**TAILOR-MADE SERVICE:** Please enquire for a personalised itinerary to fulfil your individual requirements. We can combine hotels, change route, excursions and we can offer triple rooms, suites and De Luxe Hotels.

## The Primavera Tour

19 night itinerary:

- Quito - 2 nights
- Amazon Lodge - 4 nights
- Quito - 1 night
- Riobamba - 1 night
- Cuenca - 3 nights
- Guayaquil - 1 night
- Galápagos Cruise - 7 nights

web [veloso.com/primavera](http://veloso.com/primavera)



The richly decorated interior of La Compañía Church

Frigate bird



Nazca (masked) Booby





# GALAPAGOS EXPLORATION CRUISES

## THE GALAPAGOS ISLANDS

Admire the tame wildlife of the Galápagos Islands where Darwin developed his theory of evolution by natural selection. The Galápagos are located in the Pacific Ocean, directly on the equator and 600 miles off the coast of Ecuador. Here you can walk alongside the abundant wildlife thriving on the nutrients brought by a warm water current from the north which collides with a cold current from the south.

## THE WILDLIFE

Most of the species are endemic so that they can be seen throughout the year. Our website has an approximate calendar of the Cycle of Nature; for example, the sea lions have their pups from August to October. It is possible to swim with the juvenile sea lions all year except October and the Albatrosses nest on Hood Island from April to November. From July to September there is more wind and the water is cooler. In September the sea is quite choppy so it is the least attractive time to visit, and it is when several boats go into dry dock for maintenance.





## THE YACHTS

You stay onboard your chosen yacht as a means to travel between the islands with no packing and unpacking. The yachts cruise at night so you can have daily walks ashore in the morning and afternoon. Please take in consideration that being on a Galápagos Cruise means that you are in the Pacific feeling the movement of the sea; the boats have noise and vibration from machinery (engines, generators, desalination plant, ventilation) and the space in the cabins and public areas is restricted considerably depending on the yacht.

## THE EXCURSIONS

For the excursions ashore, you will be accompanied by a guide following well-defined paths so that the wildlife is not disturbed and the consequences of human presence are minimised. Whichever boat you choose, the group ashore will not exceed 16 passengers per guide (this number may be lower depending on the season and the size of your yacht) and the landings are staggered so that you explore in small groups. There are few piers so you need some agility to step ashore onto rocks or beaches, in wet and dry landings off the tenders.



# DARWIN TOUR

## GALAPAGOS CRUISE, UK FLIGHTS & HOTEL IN QUITO - 9 NIGHTS

Exploration Cruises	No. of Passengers	Price from	Page	Departure from UK	Category
Cachalote	16	£3785	p139	Monday	Tourist
Samba	14	£4123	p139	Sunday	Tourist
Beluga	16	£4328	p137	Wednesday	First Superior
Legend	100	£4433	p138	Saturday & Tuesday	First
Eric & Letty	20	£4597	p136	Friday	First Superior
Mary Anne	16	£5041	p134	Thursday	First
Silversea Galapagos	100	£5661	p133	Thursday	Deluxe
Evolution	32	£5675	p135	Thursday	First
Ocean Spray Catamaran	16	£5973	p133	Thursday	Deluxe
Grace	18	£5995	p132	Thursday	Deluxe
La Pinta	48	£6228	p132	Wednesday	Deluxe

**DARWIN TOUR** includes **Flights** from London to Madrid and onto Quito, on IBERIA or LAN Airlines flying daytime and arriving in the evening. The return flight is overnight, arriving London the following day in the afternoon.

On arrival you will be met and taken to the **Casona de La Ronda Hotel** for 2 nights' accommodation including breakfast. Afternoon **tour of Quito**. Transfer to the airport and **fly to Galápagos**, to board your selected vessel above, for a **7 night cruise** including accommodation in a standard cabin for double occupancy, all meals and daily excursions with Naturalist Guides. Each vessel has two seven night itineraries that alternate every two weeks. We will provide a precise itinerary for your chosen vessel and dates of travel. Further details and photographs of each yacht on pages 132 to 139.

**Fly back** to Guayaquil to connect with the LAN or IBERIA overnight flight to Madrid and onto London. UK regional airport departures available with KLM. Please enquire for HIGH season prices and upgrades to Business class on IBERIA or LAN. The Galapagos Park fee of US\$100 per person is extra.

**TWO WEEK GALAPAGOS CRUISES:** We can offer 14 nights cruising the Galápagos Islands on board a number of yachts allowing for an extensive itinerary, visiting more islands at a leisurely pace.



## GRACE *Deluxe*



web [veloso.com/grace](http://veloso.com/grace)

M/Y Grace is named after her last owner, Her Serene Highness Princess Grace of Monaco: the name is a representation of her elegance, beauty and prestige. Grace is the ideal yacht for the traveller who seeks a true safari experience, complimented with excellent service and dining. M/Y Grace offers 9 spacious staterooms of up to 19 square metres (209 square feet) to accommodate 18 guests. The two Master Suites, two Twin Suites and 5 Premium Staterooms feature private bathrooms, individual climate controls and plenty of storage space for clothing and luggage. Bathrooms have all the essential amenities, hair dryers and ample space to store toiletries. Five cabins have twin beds and the other four cabins have double beds. The Grace also has a cruise director onboard. The yacht has spacious public spaces inside, as well as 'al fresco' dining areas, sun deck, library, bar-salon, kayaks, and a jacuzzi.

### 7 night itinerary 'Darwin's Footsteps'

**Sat** Baltra Airport, Dragon Hill, Whaler's Bay  
**Sun** Santa Fe, South Plaza  
**Mon** Prince Philip's Steps, Darwin Bay (Genovesa)  
**Tue** Punta Espinoza (Fernandina), Urbina Bay (Isabela)  
**Wed** Tagus Cove, Punta Vicente Roca (Isabela)  
**Thu** Espumilla Beach, James Bay  
**Fri** Darwin Research Centre, Twin Craters, El Chato Tortoise Reserve (Santa Cruz)  
**Sat** Frigate Hill, Puerto Baquerizo Moreno Airport



PRICES	High	Mid
Standard Stateroom	£5221	£4775
Superior Stateroom	£5436	£4990
Ocean View Suite	£5579	£5132
Master Suite	£5829	£5382

Prices per person sharing a cabin including flights from/to Guayaquil to Galapagos, accommodation in your chosen cabin for double occupancy, all daily guided excursions, full board, wet suits and snorkelling equipment.

SEASONS: **Low:** 27 Aug - 10 Dec  
**Mid:** 07 Jan - 26 Aug; 11-23 Dec  
**High:** 24 Dec - 6 Jan

### 7 night itinerary 'Beyond Darwin's Footsteps'

**Sat** Puerto Baquerizo Moreno Airport, Lobos & Kicker Rock  
**Sun** Punta Suarez, Gardner Bay (Española)  
**Mon** Post Office Bay, Punta Cormorant & Champion Islet (Floreana)  
**Tue** Dragon Hill, El Chato Tortoise Reserve (Santa Cruz)  
**Wed** Bachas Beach, Chinese Hat  
**Thu** Rabida, Sullivan Bay  
**Fri** Bartolome, Pinnacle Rock, North Seymour  
**Sat** Mosquera Islet, Baltra Airport



## LA PINTA *Deluxe*



web [veloso.com/lapinta](http://veloso.com/lapinta)

La Pinta offers a relaxed yet lavish experience, with the highest standards of service. She accommodates up to 48 passengers in 24 spacious twin or double cabins, all with panoramic windows, private bathrooms and comfortable fittings. Social areas include a lounge, bar, dining room, library, and a large sundeck with both shaded and unshaded areas. There is also a jacuzzi for the use of all guests. La Pinta also has a large outside area for 'al fresco' dining.

PRICES	High	Low
Standard Cabin	£4961	£4788

SEASONS: **High:** 23 Dec - 6 Jan  
**Low:** 07 Jan - 22 Dec

Prices are per person including return flights from Guayaquil to Galapagos, accommodation in a cabin for double occupancy, guides, excursions, full board (drinks extra). Galapagos park fee of US\$100 per person is not included.

### Eastern / Northern 7 night itinerary

**Fri** Puerto Baquerizo Moreno Airport, Cerro Colorado  
**Sat** Punta Pitt, Cerro Brujo (San Cristobal)  
**Sun** Punta Suarez, Gardner Bay (Española)  
**Mon** Darwin Research Centre, El Chato Tortoise Reserve (Santa Cruz)  
**Tue** Bahia Ballena, Chinese Hat  
**Wed** Bartolome, Sullivan Bay  
**Thu** Darwin Bay, Prince Philip's Steps (Genovesa)  
**Fri** Baltra Airport

### Western 7 night itinerary

**Fri** Baltra airport, North Seymour  
**Sat** Punta Vicente Roca (Isabela), Punta Espinoza (Fernandina)  
**Sun** Urbina Bay, Tagus Cove (Isabela)  
**Mon** Rabida, Dragon Hill  
**Tue** Darwin Research Centre, Twin Craters (Santa Cruz)  
**Wed** Post Office Bay, Punta Cormorant & Devil's Crown (Floreana)  
**Thu** Santa Fe, South Plaza  
**Fri** Puerto Baquerizo Moreno Airport

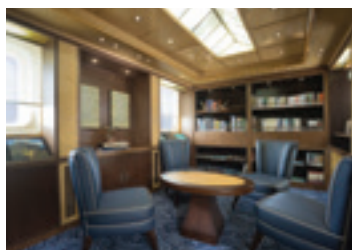






## SILVER GALAPAGOS *Deluxe*

Silversea is renowned for luxury cruising and the Silver Galapagos is the most spacious and luxurious large ship you can choose. It takes the maximum of 100 passengers permitted by the Park, so no other yachts can be in the same spot for excursions at the same time. All cabins are ocean-view suites, many with private balcony and all with the services of a professional butler. Your 'All-Inclusive Lifestyle' includes daily excursions, room service, drinks, gratuities, and open-seating dining with sumptuous gourmet cuisine served in the main restaurant and outdoor grill.



8 days • 7 nights	High	Low
Explorer Suite	£4457	£4315
Terrace Suite	£5769	£5346
Veranda Suite	£5957	£5533
Silver Suite	£7457	£6752
Seasons: Low: 07Jan-23Dec /High: 23Dec-6Jan Prices are per person including return flights from Guayaquil to Galápagos, accommodation, guides, excursions, all inclusive of food, drinks, gratuities and National Park Fees.		

web [veloso.com/silvergalapagos](http://veloso.com/silvergalapagos)

### 7 night Western Itinerary

**Sat** Baltra Airport, Sullivan Bay  
**Sun** Bartolome, Espumilla Beach  
**Mon** Punta Vicente Roca (Isabela), Punta Espinoza (Fernandina)  
**Tue** Tagus Cove, Elizabeth Bay (Isabela)  
**Wed** Post Office Bay, Punta Cormorant, Devil's Crown  
**Thu** La Galapaguera, Cerro Brujo (San Cristobal)  
**Fri** Twin Craters, Darwin Research Centre (Santa Cruz)  
**Sat** Bachas Beach, Baltra Airport

### 7 night Central itinerary

**Sat** Baltra Airport, Dragon Hill  
**Sun** Prince Philip's Steps, Darwin Bay (Genovesa)  
**Mon** North Seymour, El Chato Tortoise Reserve (Santa Cruz)  
**Tue** Punta Pitt, El Junco Lagoon  
**Wed** San Cristobal Visitor's Centre, Frigate Hill  
**Thu** Gardner Bay, Punta Suarez (Española)  
**Fri** Darwin Research Centre, South Plazas  
**Sat** Baltra Airport



## OCEAN SPRAY *Deluxe*

web [veloso.com/oceanspray](http://veloso.com/oceanspray)



Ocean Spray is a luxury catamaran, offering exceptional comfort and service in a spacious, stylish, relaxed environment. With their twin hulls, catamarans are often wider than yachts, giving plenty of internal space without a large increase in overall size of the vessel. She accommodates 16 passengers in 8 double cabins (there is also one single cabin). Each cabin has large picture windows, individual balcony with seating, private facilities and air conditioning. There is an indoor dining room as well as an outdoor area for 'al fresco' dining, and a large sun deck with jacuzzi. An expert naturalist guide leads daily excursions onto the islands, and there are also kayaks.

### 7 night Western itinerary

**Sat** Baltra Airport, Chinese Hat  
**Sun** Punta Vicente Roca (Isabela), Punta Espinoza (Fernandina)  
**Mon** Tagus Cove (Isabela), Urbina Bay  
**Tue** Elizabeth Bay, Punta Moreno (Isabela)  
**Wed** Darwin Research Station, Twin Craters (Santa Cruz)  
**Thu** South Plaza, Santa Fe  
**Fri** Punta Suarez, Gardner Bay (Española)  
**Sat** Puerto Baquerizo Moreno Airport

### 7 night Central itinerary

**Sat** Puerto Baquerizo Moreno Airport, Isla Lobos  
**Sun** Punta Pitt, Cerro Brujo (San Cristobal)  
**Mon** Post Office Bay, Punta Cormorant & Devil's Crown (Floreana)  
**Tue** Black Turtle Cove, Bartolome  
**Wed** Darwin Bay, Prince Philip's Steps (Genovesa)  
**Thu** Espumilla Beach, Buccaneer Cove (Santiago)  
**Fri** North Seymour, Santa Cruz Highlands  
**Sat** Mosquera Islet, Baltra Airport

8 days • 7 nights	All Year
Suite with Balcony	£4587

Prices are per person including return flights from Guayaquil to Galápagos, accommodation in a cabin for double occupancy, transfers, transport, naturalist guides, daily excursions, full board. (drinks extra). Galápagos park fee of US\$100 per person is not included.





## ISABELA II *Deluxe*



web [veloso.com/isabela](http://veloso.com/isabela)

Luxury medium size cruise ship, fully air conditioned, accommodation for a maximum of 40 passengers, 27 crew with 3 naturalist guides. There is a bar, restaurant, sun deck and 20 spacious twin cabins, all with private facilities, lower berths and outside view. View the full itinerary on our website.

Departs Mondays and Fridays

Prices per person sharing a cabin inc. flights

Please enquire for 6 & 8 night cruises

5 days • 4 nights	High	Low
Standard Cabin	£2693	£2599
Master Suite Cabin	£2791	£2697



## SEAMAN JOURNEY *First*



web [veloso.com/seaman](http://veloso.com/seaman)

Seaman Journey is a spacious catamaran with 8 cabins for 16 passengers. Upper deck cabins share a balcony and have a double bed; lower deck cabins have twin beds. There is a lounge area with a bar and dining room located on the main deck and a sundeck with covered area for lunch "alfresco". Full itinerary on our website.

Departs every Friday

Prices per person sharing a cabin inc. flights

8 days • 7 nights	All Year
Lower Deck Twin	£3412
Upper Deck Suite	£4123



## CORAL I & II *First*



web [veloso.com/coral](http://veloso.com/coral)

The Coral I & II are modern motor-yachts with a capacity of 36 and 20 guests respectively. The cabins are located on 3 decks, all with twin lower berths, private facilities, air-conditioning, with portholes or picture windows. There is also a jacuzzi at the stern, and a large sun deck on the top with barbecue. Full itinerary on our website.

Departs Wednesdays and Sundays

Prices per person sharing a cabin inc. flights

8 days • 7 nights	High	Low
Standard Cabin	£3346	£3218
Standard Plus Cabin	£3988	£3829



## MARY ANNE *First*



web [veloso.com/maryanne](http://veloso.com/maryanne)

With almost 1000 square metres of sail, Mary Anne is an elegant motor-sailing yacht offering a genuine windjammer sailing experience with plenty of deck space. She accommodates 16 passengers in 12 cabins, each with private bathroom, air-conditioning, some with double beds and some with upper and lower berths.

View the full itinerary on our website

Departures Saturdays for 7 & 14 night cruises

Prices per person sharing a cabin inc. flights

8 days • 7 nights	High	Low
Standard Cabin	£3682	£3391



## GALAXY *First*



web [veloso.com/galaxy](http://veloso.com/galaxy)

Galaxy is a 35 metre, first class, fully air conditioned motor yacht offering 3, 4 and 7 night cruises. There are 9 double cabins for a maximum of 16 passengers and a naturalist guide on all excursions. All cabins have private bathroom, hot water and air conditioning. View the full itinerary on our website.

Departures every Saturday

Prices per person sharing a cabin inc. flights

8 days • 7 nights	High	Low
Standard Cabin	£2937	£2861
Superior Cabin	£3040	£2962





## ANAHI *First*



web [veloso.com/anahi](http://veloso.com/anahi)

Anahi is comfortable and stable catamaran launched in 2006. Accommodation is in 6 twin cabins and 2 suites, all with large portrait windows and ocean views, private facilities and air-conditioning. She has ample social areas, including a Jacuzzi for 6 people and a large sundeck for reading or relaxation. View the full itinerary on our website.

Departures every Friday

Prices per person sharing a cabin inc. flights

8 days • 7 nights	All Year
Standard Cabin	£3328
Superior Cabin	£3493



### ALL THE YACHTS LISTED BELOW:

SEASONS *High*: 02 to 08 Apr, 23 Dec to 08 Jan • *Low*: Rest of the year

All prices per person in a cabin for double occupancy including return flights from Guayaquil to Galapagos, accommodation in your chosen cabin, guides, excursions, full board (drinks extra). Galapagos tax of USD100 is not included. Prices for itineraries of 3 nights and 4 nights on request. Prices for single cabin available on request.

## ECLIPSE *Deluxe*



web [veloso.com/eclipse](http://veloso.com/eclipse)

M/V Eclipse is a luxury expedition vessel with 26 outside cabins, all with sea views and air conditioning, for a maximum of 48 passengers. There is a lounge, a library, an elegant indoor restaurant, and also an al fresco dining area. At the top of the ship there is an observation/sun deck with a jacuzzi and sun loungers. View the full itinerary on our website.

Departs every Saturday - Prices per person sharing

8 days • 7 nights	High	Low
Main deck Stateroom	£4628	£4494
Boat Deck Superior	£5228	£5094



## EVOLUTION *First*

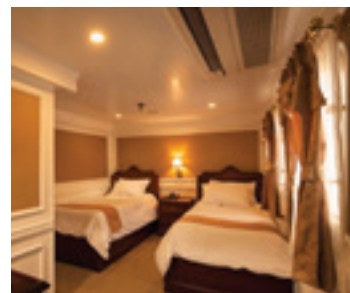


web [veloso.com/evolution](http://veloso.com/evolution)

Evolution has a 1920s style with modern comfort and capacity for 32 guests in 16 well-appointed cabins, she has 18 crew members, 2 naturalist guides and a cruise director. All cabins have climate controls and ample space to hang and store clothing. There is a deck with lounge chairs and extensive outside areas. View the full itinerary on our website.

Departs every Saturday - Prices per person sharing

8 days • 7 nights	High	Low
Standard Cabin	£4604	£4149
Superior Cabin	£4837	£4383



## TIP TOP III, IV *Tourist*

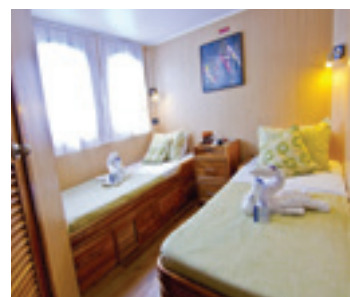


web [veloso.com/tiptop](http://veloso.com/tiptop)

Classed as Tourist Superior yachts with each accommodating up to 16 passengers in 8 double cabins and 1 single cabin. Each cabin has its own private bathroom and the yacht is fully air conditioned. There is a bar, dining room, library, sun deck and diving platform. View the full itinerary on our website.

Departs every Friday - Prices per person sharing

8 days • 7 nights	Tip Top III	Tip Top IV
Standard Cabin	£2892	£2984
Superior Cabin	£3259	£3360



## BEAGLE *Tourist*



web [veloso.com/beagle](http://veloso.com/beagle)

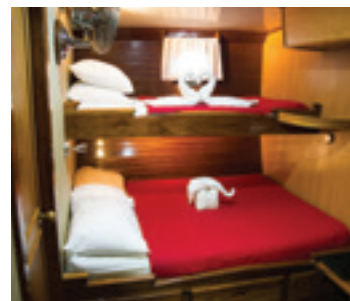
Named for HMS Beagle, the ship on which Charles Darwin visited the Galapagos on his historic voyage, the Beagle is a steel-hulled motor brigantine built in England. She can accommodate up to 13 passengers in 6 double cabins and 1 single, all with lower double and upper single berths.

View the full itinerary on our website.

Departures every Tuesday

Prices per person sharing a cabin

8 days • 7 nights	High	Low
Standard Cabin	£3240	£2990





**ERIC & LETTY** *First*  
web [veloso.com/eric](http://veloso.com/eric)

The first class motor-yachts, Eric & Letty are sister ships each with a 20 passenger capacity. Each yacht has 10 cabins over three decks, some with twin lower berths and some with double beds; two cabins are also available as triples, with twin lower berths and an upper berth. The cabins are all fully air-conditioned and have private facilities with hot and cold water showers, amenities and hair dryer, as well as towels. Interiors are of polished teak wood and the yachts have a comfortable bar, lounge area and dining room serving excellent cuisine with house wine included. There is also a spacious sundeck with shaded area. Each vessel has a crew of 9 plus 2 expert naturalist guides taking small groups ashore of approximately 10 guests each.

Picture: Ellen Barone



### 7 night itineraries depart on Sunday

#### Itinerary A: Southern-Central Route

**Sun** Puerto Baquerizo Moreno  
Airport, Frigate Hill  
**Mon** Cerro Brujo, Punta Pitt  
(San Cristobal)  
**Tue** Punta Suarez, Gardner Bay  
(Espanola)  
**Wed** Punta Cormorant, Devil's  
Crown, Post Office Bay  
**Thu** Twin Craters, El Chato  
Tortoise Reserve, Darwin  
Research Centre (Santa Cruz)  
**Fri** Bartolome, Pinnacle Rock,  
Las Bachas, Chinese Hat  
**Sat** South Plaza, North Seymour  
**Sun** San Cristobal Visitor's Centre,  
Puerto Baquerizo Airport

#### Itinerary B: Western-Northern Route

**Sun** Puerto Baquerizo Moreno  
Airport, La Galapaguera  
**Mon** Darwin Bay (Genovesa),  
Prince Philip's Steps  
**Tue** Las Bachas, Dragon Hill  
(Santa Cruz)  
**Wed** Punta Espinoza, Urbina Bay  
(Isabela)  
**Thu** Elizabeth Bay, Las Marielas,  
Tagus Cove (Isabela)  
**Fri** Puerto Egas, Rabida  
**Sat** El Chato Tortoise Reserve,  
Lava Tunnels, (Santa Cruz)  
**Sun** San Cristobal Visitor's Centre,  
Puerto Baquerizo Airport

#### Family Departures Available



Getting close to the Wildlife in the Galapagos



Kayaking in the Galapagos.



Dolphin Deck Cabin



Lounge Area



Iguana Deck Cabin

#### Prices per person sharing a cabin including flights

8 days • 7 nights	All Year
Iguana Deck	£3074
Booby Deck	£3371
Dolphin Deck	£3606

Prices are per person including return flights to/from Guayaquil, accommodation in a cabin for double occupancy, all excursions with English speaking expert Galapagos guides, service charge and full board included. Galapagos park tax of US\$100 per person is not included. Book the Eric & Letty more than 6 months in advance and save with the early booking offer. Please contact us for information.





Giant Tortoises

## BELUGA First [web veloso.com/beluga](http://web.veloso.com/beluga)

M/Y Beluga is a spacious and comfortable first class motor yacht, with accommodation for 16 passengers in 8 double cabins. Each cabin has private bathroom, air conditioning, portholes or windows and with either twin or double beds - there is one cabin with an extra berth for

triple occupancy. There is ample deck space with seating to enjoy the views, and a comfortable lounge area with panoramic windows and two large tables for family-style dining. An expert Naturalist guide is always on board to lead excursions.



Sally Lightfoot Crab



### 7 night itinerary 'Genovesa'

**Fri** Baltra Airport, Dragon Hill  
**Sat** Santa Fe, South Plaza  
**Sun** Cerro Brujo, La Galapaguera  
**Mon** Gardner Bay, Punta Suarez  
**Tue** Darwin Research Centre, Santa Cruz Highlands  
**Wed** Chinese Hat, Sullivan Bay  
**Thu** Darwin Bay, Prince Philip's Steps  
**Fri** Turtle Cove, Baltra Airport

### 7 night itinerary 'Fernandina'

**Fri** Baltra airport, Santa Cruz Highlands  
**Sat** Punta Cormorant, Devil's Crown, Post Office Bay  
**Sun** Puerto Villamil, Sierra Negra Volcano  
**Mon** Punta Moreno, Elizabeth Bay  
**Tue** Urbina Bay, Tagus Cove  
**Wed** Punta Espinoza, Punta Vicente Roca  
**Thu** Puerto Egas, Bartolome  
**Fri** North Seymour, Baltra Airport

#### Prices per person sharing a cabin including flights

	High	Low
Double Cabin	£3220	£2945

Prices are per person including return flights from Guayaquil to Galapagos, accommodation in a cabin for double occupancy, daily excursions with English speaking expert Galapagos guide, service charge and full board included (drinks are extra). Galapagos park tax of US\$100 per person is extra, payable on arrival.

SEASONS: **High:** 1Jan-30 Apr; 16 Jun-31 Aug; 1-30Nov; 9-31Dec/ **Low:** 1May-15Jun; 1Sep-30Oct

## FINCH BAY HOTEL

First

The charming Finch Bay Eco-Hotel stands surrounded by mangroves just a few steps from a small beach, and offers 27 comfortable rooms in a tranquil setting, just across the bay from the small town of Puerto Ayora on Santa Cruz Island, accessible by water taxi. Guests can relax by the pool or enjoy by day the excursions on the hotel's private yacht, Sea Lion, while spending the night on land - ideal for those who do not have good sea legs. Each room has a small porch with seating, facing either the gardens or the ocean, private facilities,

## [web veloso.com/finchbay](http://web.veloso.com/finchbay)

air conditioning and unlimited water supply as the hotel has its own water treatment plant. This ecologically oriented hotel also has innovative waste processing and recycling programmes. The entire infrastructure is totally oriented to a concept of true ecotourism in a pristine natural environment. Delicious healthy international and Galapagos inspired menus are prepared daily, using fresh ingredients. The Finch Bay Hotel is accessible from the airport of Baltra by car or bus and boat across the channel, a journey of 2 hours.



#### PRICES for 4 days • 3 nights

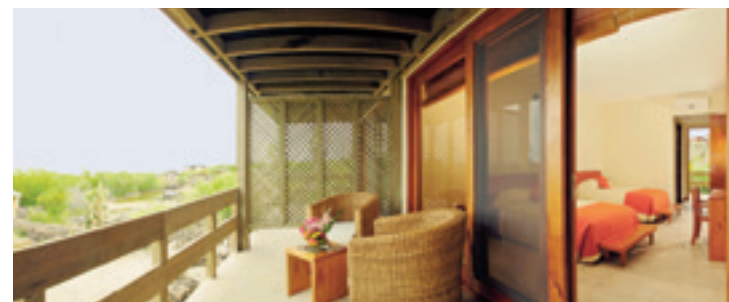
##### Including airport transfers in Galapagos

	Single	2 Sharing	Extra night sharing
All Year	£1562	£1040	£163

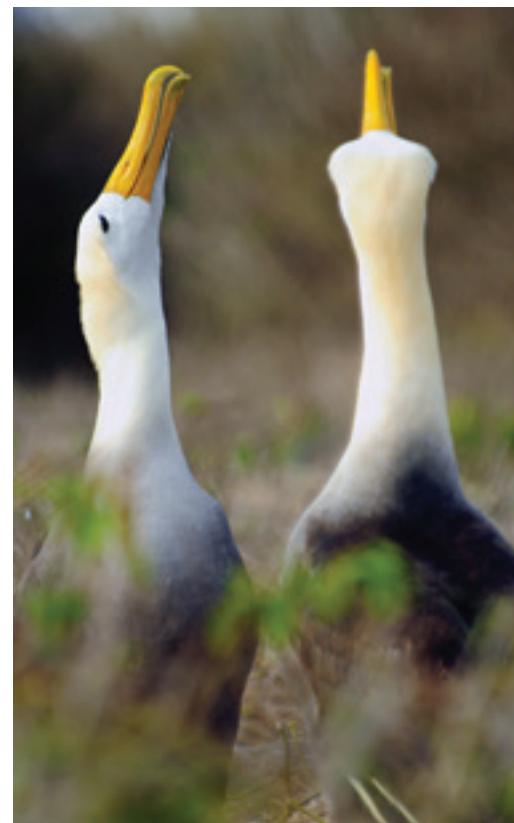
##### Including return flights from Guayaquil, all meals, transfers & daily excursions

	Single	2 Sharing
All Year	£2017	£1654

Prices are per person including accommodation, Breakfast and service charge. You can combine taking daily excursions some days, and some other days accommodation only to relax at the hotel. Galapagos park fee of \$100 per person is extra.



Room at Finch Bay



Albatrosses





## GALAPAGOS LEGEND

First

The Galapagos Legend is a spacious ship that can take up to 100 passengers, and has a large outdoor area with sun deck, bar and swimming pool. 5 expert Naturalist Guides take you ashore on daily excursions, morning and afternoon, in small groups of up to 16 guests. The cabins are comfortable and modern, located on four decks, all with lower berths and private facilities. 3 cabins are interior, the rest have either portholes or panoramic windows, and the top suites have private balconies.

### 7 Night Itinerary I

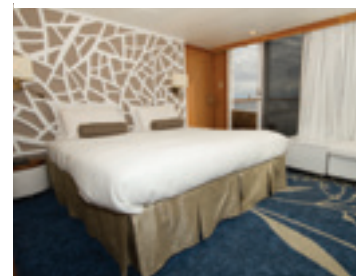
**Mon** Baltra Airport, Twin Craters, El Chato Tortoise Reserve (Santa Cruz)  
**Tue** Puerto Egas, Bartolome  
**Wed** Dragon Hill, North Seymour  
**Thu** Bachas Beach, Turtle Cove (Santa Cruz)  
**Fri** Sullivan Bay (Santiago), Rabida  
**Sat** Urbina Bay, Tagus Cove (Isabela)  
**Sun** Punta Espinoza (Fernandina), Punta Vicente Roca (Isabela)  
**Mon** Santa Cruz Highlands, Baltra Airport

*Arrivals or departures on Mondays & Thursdays. Children FREE on certain dates shown on our webpage*

web [veloso.com/legend](http://veloso.com/legend)

### 7 Night Itinerary II

**Mon** Baltra Airport, Mosquera Islet  
**Tue** South Plaza, Santa Fe  
**Wed** Punta Pitt, Cerro Brujo (San Cristobal)  
**Thu** Cerro Colorado, Frigate Hill, San Cristobal Visitor's Centre  
**Fri** Gardner Bay, Punta Suarez (Española)  
**Sat** Post Office Bay, Punta Cormorant, Devil's Crown, Champion (Floreana)  
**Sun** Santa Cruz Highlands, Darwin Research Centre  
**Mon** Daphne, Baltra Airport



PRICES	High	Low
Standard Cabin (Inside)	£3170	£3050
Standard Plus Cabin	£3771	£3622
Junior Suite	£4209	£4039

*Prices per person including flights from/to Guayaquil to Galapagos, accommodation in your chosen cabin for double occupancy, all daily guided excursions, full board and soft drinks with meals, wet suits and snorkelling equipment. Galapagos park fee of US\$100 per person is not included.*

## SANTA CRUZ II First web [veloso.com/santacruz](http://veloso.com/santacruz)



Designed for operations in remote areas, M/V Santa Cruz II is a modern expedition ship. She accommodates up to 90 guests in 50 spacious, contemporary cabins, created with the ethos of simplicity. All cabins and suites have picture windows, air conditioning, and private facilities. Passengers can relax in the ample common areas including indoor and outdoor dining restaurant, two lounge bars, a library, and two ocean view hot tubs. There is also a fitness centre. Daily excursions are led by naturalist guides, as well as snorkelling and kayaking. There is a glass bottomed boat for those who prefer to stay dry.

### PRICES

6 Days•5 Nights	High	Low	5 Days•4 Nights	High	Low
Horizon Deck Explorer	£3246	£3152	Horizon Deck Explorer	£2682	£2588
Expedition Deck Explorer	£3353	£3260	Expedition Deck Explorer	£2767	£2674
Panorama Deck Explorer	£3433	£3340	Panorama Deck Explorer	£2832	£2738
Darwin Suite	£3813	£3719	Darwin Suite	£3135	£3041

*Prices are per person including return flights from Guayaquil to Galapagos, accommodation in a cabin for double occupancy, guides, excursions, full board (drinks extra). Galapagos park fee of US\$100 per person is not included.*

### Northern 4 night itinerary

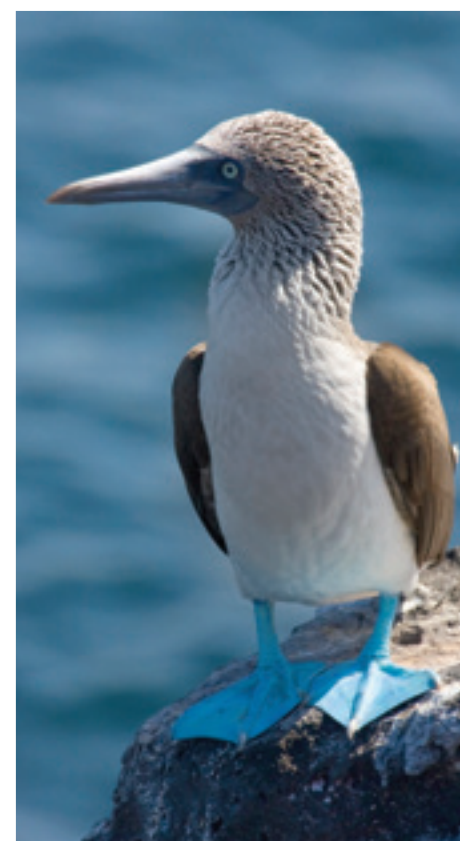
**Mon** Baltra airport, Las Bachas  
**Tue** Buccaneer Cove, Puerto Egas  
**Wed** Red Beach, Bartolomé  
**Thu** Prince Philip Steps, Darwin Bay  
**Fri** Puerto Baquerizo Moreno / Tortoise Breeding Centre

### Western 5 night itinerary

**Wed** Baltra airport, North Seymour  
**Thu** Punta Vicente Roca, Punta Espinoza  
**Fri** Tagus Cove, Urbina Bay  
**Sat** Charles Darwin Research Station, Optional activities  
**Sun** Post Office Bay & Baroness Cove, Punta Cormorant  
**Mon** Baltra airport

### Eastern 4 night itinerary

**Sat** Puerto Baquerizo Moreno, Punta Pitt  
**Sun** Santa Fe, South Plaza  
**Mon** Charles Darwin Station, Optional Activities  
**Tue** Punta Suarez, Gardner Bay  
**Wed** Baltra airport







## CACHALOTE I Tourist

web [veloso.com/cachalote](http://veloso.com/cachalote)



The Cachalote I is a Tourist Class 96ft schooner rigged motor sailor. An old style sailing ship with an attractive dark wood interior, she accommodates up to 16 passengers in 7 double cabins with upper and lower berths (one cabin has a double bed), all with air conditioning, private facilities with hot shower. There is an indoor salon, dining room and bar, and plenty of outdoor deck space to sit and enjoy the sun, fresh air and scenery. An expert naturalist guide leads all daily excursions and activities on the islands.

Prices per person sharing a cabin including flights	High	Low
Double Cabin	£2211	£2011

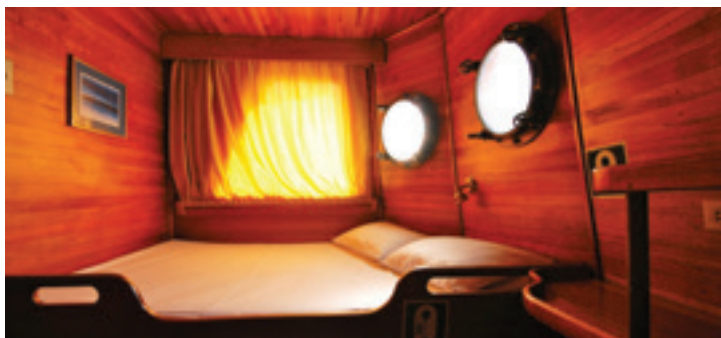
Prices are per person including return flights from Guayaquil to Galapagos, accommodation in a cabin for double occupancy, daily excursions with English speaking expert Galapagos guide, service charge and full board included (drinks are extra). Galapagos park tax of US\$100 per person is extra, payable on arrival. SEASONS: *High*: Jan - 29 Apr; 15 Jun - 30 Aug; 31Oct - Dec / *Low*: 30 Apr - 14 Jun; 31Aug - 30 Oct

### Genovesa itinerary

**Wed** Baltra, Santa Cruz Highlands & Darwin Research Centre  
**Thu** South Plaza, Santa Fe  
**Fri** Cerro Brujo, El Junco Lagoon (San Cristobal)  
**Sat** Gardner Bay, Punta Suarez (Española)  
**Sun** Punta Cormorant, Devil's Crown, Post Office Bay (Floreana)  
**Mon** Dragon Hill, Sullivan Bay (Santa Cruz)  
**Tue** Darwin Bay, Prince Philip's Steps (Genovesa)  
**Wed** Black Turtle Cove, Baltra Airport (Santa Cruz)

### Fernandina itinerary

**Wed** Baltra, Santa Cruz Highlands & Darwin Research Centre  
**Thu** Chinese Hat, Rabida  
**Fri** Sierra Negra & Puerto Villamil, Las Tintoreras, Los Humedales (Isabela)  
**Sat** Punta Moreno & Elizabeth Bay (Isabela)  
**Sun** Urbina Bay & Tagus Cove (Isabela)  
**Mon** Punta Espinoza (Fernandina), Punta Vicente Roca (Isabela)  
**Tue** Puerto Egas (Santiago), Bartolome  
**Wed** North Seymour, Baltra Airport (Santa Cruz)



## SAMBA Tourist web [veloso.com/sambagalapagos](http://veloso.com/sambagalapagos)



Samba is a Tourist Class 78ft steel-hulled motor yacht built in Holland. She accommodates 14 passengers in 7 double occupancy cabins with upper and lower berths (one cabin on the upper deck has a double bed), all with private bathroom and air conditioning. She has a spacious salon for evening briefings and dining, and plenty of outdoor deck space to relax, sunbathe and watch the scenery go by. She has a crew of five, and an expert naturalist guide who leads excursions every morning and afternoon.

### 7 Night North-West Itinerary

**Tue** Baltra Airport, Bachas Beach (Santa Cruz)  
**Wed** Darwin Bay, Prince Philip's Steps (Genovesa)  
**Thu** Punta Meija, Black Beach (Marchena)  
**Fri** Punta Albemarle, Punta Vicente Roca (Isabela)  
**Sat** Punta Espinosa (Fernandina) Urbina Bay (Isabela)  
**Sun** Elizabeth Bay, Punta Moreno (Isabela)  
**Mon** Aliso de la Paz, La Loberia (Floreana)  
**Tue** Santa Cruz Highlands, Baltra Airport

### 7 Night South-East Itinerary

**Tue** Baltra Airport, Darwin Research Centre (Santa Cruz)  
**Wed** Punta Cormorant, Post Office Bay (Floreana)  
**Thu** Punta Suarez, Gardner Bay  
**Fri** Los Lobos, Kicker Rock, Punta Pitt (San Cristobal)  
**Sat** Santa Fe, South Plaza  
**Sun** Sullivan Bay, Bartolome  
**Mon** James Bay, Rabida  
**Tue** North Seymour, Baltra Airport



PRICES	High	Low
Standard Cabin	£2903	£2684

SEASONS: *High*: 18 Dec - 4 Jan  
*Low*: 5 Jan - 17 Dec



# AMAZON

web [veloso.com/amazonecuador](http://veloso.com/amazonecuador)



*Canoe trip on the Napo River*

## Manatee

The Manatee is a riverboat providing an ideal opportunity to visit the Amazon rainforest in comfort and at a slow pace. The Manatee is 27 metres long by seven wide, has three decks with a bar, dining room, lounge area, individual air-conditioned cabins with private facilities and hot water for a maximum of 30 passengers. She has a crew of 12 including expert naturalist guides, as well as laundry services. Rubber boots and waterproof ponchos are available. The boat navigates the Napo River, stopping en route for you to hike and take canoe trips to see the forest accompanied by the naturalist guides to explain the ecosystems.

### PRICES

NO OF TRAVELLERS	1	2
5 days • 4 nights	Single	Sharing
All year	£1579	£1109
4 days • 3 nights		
All year	£1329	£943

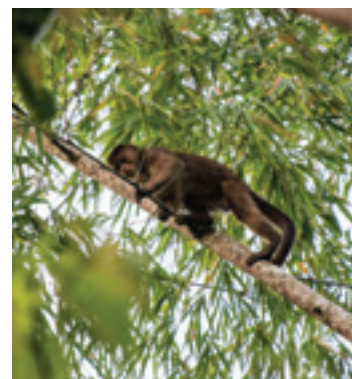


*Manatee Amazon explorer*

Prices per person including transfers to/from main hotels in Quito, all transport by bus and motorised canoe in the Amazon, accommodation, English-speaking guide, full board and excursions as shown. Return flights from Quito to Coca included. Yasuni National Park fee of USD20 is not included.



*Briefing on board the Manatee*



*Spotting Wildlife in the Amazon*



*Cabin on the Manatee*

## Anakonda

Anakonda is the only luxury riverboat in the Ecuadorian Amazon. Visit remote and pristine areas of rainforest and discover the region's 15 local communities, while enjoying the comforts and services of a boutique hotel on the water. Anakonda is 148 feet-long and has a

capacity for 40 passengers, and offers fine dining as well as a fully stocked bar. The 18 spacious suites have seating areas, large and comfortable beds, and wall-to-wall panoramic windows. There is an observation deck as well as an 'al fresco' lounge area, which are ideal places to have a cocktail, or simply enjoy the spectacular view of the rainforest as it floats past.



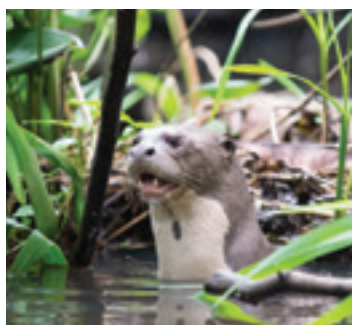


## Napo Wildlife Center

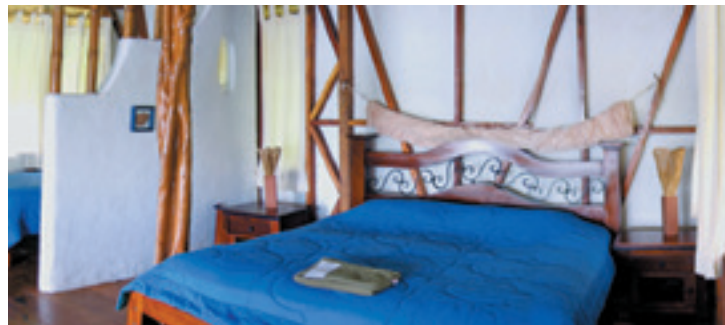
The Napo Wildlife Centre offers a selection of beautiful, comfortable thatched cabañas with private facilities, plus dining and seating areas. This lodge includes the conservation of over 53,000 acres of the most pristine Amazon Rainforest within the Yasuni National Park, the largest biosphere reserve in Ecuador. You will be met at Coca airport and taken to the bank of the river Napo for the two hour journey by motorised canoe to the Lodge. Once you arrive and settle into your room you will have a programme of daily guided excursions and walks to experience the exuberance of the Amazon rainforest.



Napo Wildlife Center



Giant River Otter



Room at Napo Wildlife Center

## Yasuni Kichwa EcoLodge

Experience the rainforest staying with the Yasuni Kichwa community village on the south bank of the Napo River. The hotel allows you to learn about the interesting culture of a people that has always lived in the forest. Local English speaking guides take you on excursions, showing a fascinating knowledge, which is practical and empiric, rather than academic. You can also interact with the people going on excursions in the jungle, rivers and stream, and visiting the canopy observation tower and clay lick where macaws and parrots congregate. The lodge is located two hours by canoe downriver from Coca airport. It is a hotel within the community and can take a maximum of 40 guests in comfortable, spacious cabins with private facilities and balconies with a hammock, safe deposit box, hot water, ventilation and plugs to charge batteries. The beds are comfortable with sheets, blankets and mosquito nets. There is also a large dining room with thatched roof: the feedback is that the food is excellent.



Canopy Tower



## Sacha Lodge

The Sacha Lodge is set on a private reserve of 1300 hectares close to the Napo River. Guests fly from Quito to Coca and are taken to the river port to continue down-river by motorised canoe. You then walk along a raised boardwalk through dense flooded palm forest to Pilchicocha Lake, where dugout canoes await to carry you to the Lodge. All cabins have high thatched roofs and private shaded terraces, including the restaurant and bar. Each of the 26 bungalow provides a private bathroom with flushing toilet and hot shower. All cabins are screened against insects, and have ceiling fans, but not air conditioning. Guided excursions include walks in the rainforest, paddle dugout canoes, night walks and canoe trips. The lodge also has an observation tower and a canopy walkway, over 30m tall. Climb into and above the rainforest canopy for a magnificent view of the dense vegetation around the lodge. From the walkway it is possible to see diverse bird species and wildlife such as monkeys and sloths. There is also a butterfly house for the breeding and study of butterflies.

### PRICES

NO OF TRAVELLERS	1	2
<b>5 days • 4 nights</b>		
All year	£1700	£1120
<b>4 days • 3 nights</b>		
All year	£1454	£956

Prices per person including transfers to/from your hotels in Quito, return flights to/from Coca, all transport by bus and motorised canoe in the Amazon, accommodation, English-speaking guide, full board (all meals) and daily excursions.



Daily excursions in the rainforest

### PRICES

NO OF TRAVELLERS	5 days 4 nights	4 days 3 nights
<b>YASUNI LODGE</b>		
All year - 2 Sharing	£793	£714
<b>SACHA LODGE</b>		
All year - 2 Sharing	£1115	£955

Prices per person including transfers to/from your hotels in Quito, return flights to/from Coca, all transport by bus and motorised canoe in the Amazon, accommodation, English-speaking guide, full board (all meals) and daily excursions.