

ARGENTINA

Argentina is a vast country with a relatively small population and a culture based on agriculture and the cattle breeding of the Gauchos. The strong multi-European heritage is present throughout the country, especially in the cosmopolitan capital Buenos Aires, and remains a source of great pride to all Argentines.

web veloso.com/argentina



Landscape

Stretching 3,460km from north to south, to the east of the Andean mountains, Argentina embraces subtropical rainforests, mountain canyons and deserts in the north. The central flat pampa and lake region and in the south, windswept Patagonia, with granite massifs, glaciers and the myriad of islands of Tierra del Fuego and Ushuaia.

Culture

Home of the tango and gauchos, the strong European links are clear upon arrival in Buenos Aires, a

cosmopolitan metropolis with architecture and stylish street cafés, reminiscent of Paris. Argentina is famed for its beef, a centre-stage ingredient of the traditional parrillada (barbecue).

Wildlife

Depending on the season, a whole wealth of wildlife can be observed

at close range on the Península Valdés. Whales make their annual visits, as do penguins (some 2 millions during the peak season), elephant seals, sea lions and their lethal predator, the killer whale. Also present are guanacos, foxes, rheas, armadillos, and a wide array of birds including the burrowing owl, petrel and albatross.



CONTENTS

PAMPA TOUR	69
BUENOS AIRES	70
ESTANCIAS, POLO & RIDING	71
LAKE DISTRICT	72-73
MENDOZA	73
IGUAZU FALLS	74
VALDEZ & SALTA	75
PATAGONIA & CRUISE	76-79

WILDLIFE, GLACIERS & PATAGONIA



The Perito Moreno Glacier reaches the opposite bank for a perfect vantage point, Days 10-12.

Argentina promises wildly differing landscapes, from tropical rainforest at the magnificent Iguazu falls, to the icy waters of the Beagle Channel in Tierra del Fuego, and the mighty glaciers of Southern Patagonia. The mountain chain of the Andes provides a breathtaking terrain for exploring the great outdoors and observing a wealth of flora and fauna, especially in the Lake District.

Days 1-4 Depart on an overnight flight direct to Buenos Aires known as the 'Paris of South America'. Transfer to the hotel, staying for three nights. Afternoon guided tour of the city, visiting the artistic and brightly decorated houses of La Boca, the historic 'Casa Rosada' Presidential Palace and admiring the architecture, wide avenue, cafes and parks. Enjoy one of the famous Tango Shows with dinner, great music and superb dancers. (B)

Days 5-6 A morning flight to the immense Iguazú Falls, set in tropical rainforest where walkways take us over the numerous falls which make up this great natural wonder. Birds and butterflies abound in the lush forest surroundings. We stay for two nights with a full day tour to walk the trails on the Argentinean side and cross the border to Brazil for a stunning panoramic view of the waterfalls. (B)

Days 7-9 Fly to Buenos Aires, and on to Bariloche, surrounded by the stunning Andean scenery of Argentina's Lake District. Dense forests, snow-capped peaks, and vast lakes make this area ideal for outdoor enthusiasts. Spend a full day with our expert guide walking in the forest and visiting the most spectacular lookout points, with a picnic lunch served on the shore of the lake. One day at leisure to explore the mountains by car, trekking or both. (B,L)

Days 10-12 Flight to Calafate, for three nights by Lago Argentino. Spend the day admiring the massive Perito Moreno Glacier, where the silence is disturbed only by the creaking and groaning of ice which splinters, forming icebergs as we watch. The next day we take a boat trip on another arm of the lake to see Upsala & Spegazzini Glaciers. (B)

Days 13-14 Fly to Ushuaia, for two nights in Tierra del Fuego. Two half day excursions to view the landscapes and windswept trees of Lapataia National Park and to take a boat trip into the icy Beagle Channel. (B)

Days 15-16 Return flight to Buenos Aires and overnight. Time to stroll, shopping and enjoy different areas of the city. Take our return flight, arriving home on Day 17. (B)

The Pampa Tour departs everyday. INCLUDING: 17 days, 14 nights' accommodation and breakfast (B), all flights (2 overnight), taxes, all transfers and excursions with our English-speaking guides, entrance fees, services of our agents throughout, all transport and meals as per the itinerary shown. Please see pages 190-193 for further details of what is included.



Iguazú Falls, Days 5-6



PRIVATE INDIVIDUAL TOUR - GUIDELINE PRICES FROM :

PAMPA Tour	Tourist			First		
	1 Single Traveller	Travelling Together Double	Own Room	1 Single Traveller	Travelling Together Double	Own Room
LOW - Mar-10Jun, 17Aug-12Dec	£5242	£3767	£4331	£6464	£4315	£5115
HIGH - 22Jun-16Aug, 13Dec-Feb	£5630	£4155	£4719	£6852	£4703	£5503

GUIDELINE TOUR PRICES are all per person, subject to availability, as all flights, hotels and services are reserved at the time you book. Please refer to our website veloso.com for current prices and any special offers available. To obtain a Full Itinerary with a Guaranteed Price for your dates of travel, please call us, email travel@veloso.com, or contact our appointed travel agents. Prices for Special Events, New Year's Eve, Christmas, Easter on request

FLIGHT departures EVERYDAY from London and UK Regional Airports, Internal Flights and Taxes, are included. UPGRADE supplement to Premium Economy from £680 ; Business Cabin seats from £1482; First Class seats on request.

HOTELS used, descriptions and photographs on our website, veloso.com/pampa

TAILOR-MADE SERVICE: Please enquire for a personalised itinerary to fulfil your individual requirements. We can combine hotels, change route, excursions and we can offer triple rooms, suites and De Luxe Hotels.

The Pampa Tour 14 night itinerary:

- Buenos Aires - 3 nights
- Iguazú Falls - 2 nights
- Bariloche - 3 nights
- Calafate - 3 nights
- Ushuaia - 2 nights
- Buenos Aires - 1 night

web veloso.com/pampa

BUENOS AIRES

web veloso.com/buenosaires

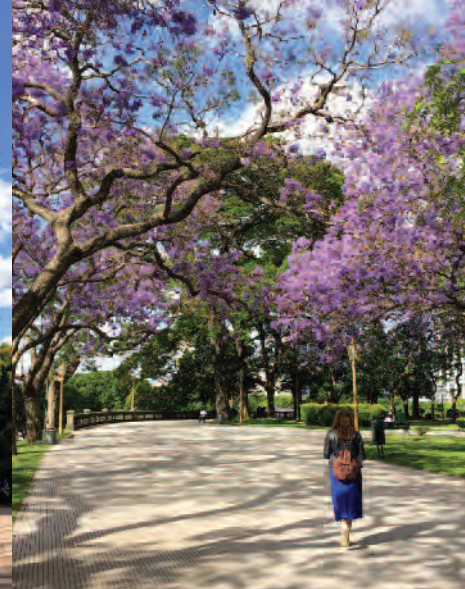
Buenos Aires is the archetypal Latin American city, with a European twist. Its people are deeply Latin: exuberant, energetic and passionate, and nowhere is that more apparent than in their favourite dance, the Tango. The city, lovingly redesigned in the French style at the turn of the century, still merits its title "the Paris of South America". What was once the Mecca of arts and music in the Americas later went into decline, and this sense of romanticism and faded grandeur makes it a fascinating place to soak up the ambience of a city that seems to exist in a world all of its own.

Loisuites *First Class Superior*

Overlooking Recoleta Park and the famous cemetery, Loisuites is perfectly located for access to the museums, art galleries and shopping. The hotel has a large heated indoor pool in winter, 2 restaurants serving international and local cuisine and a bright, relaxed atmosphere. The rooms are comfortable and decoarted to a high standard in neutral tones, and each one has a kitchenette with kettle.



Buenos Aires parks and monuments



Alvear Palace Hotel *Deluxe*

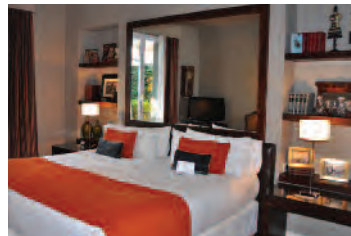
Built in 1932 and recently renovated, this is arguably the most elegant deluxe hotel in Buenos Aires and is located in the heart of La Recoleta, surrounded by excellent restaurants and shops. Decorated in Louis XVI style, its 100 spacious rooms and 95 suites feature WiFi, personal butler, a basket of fruit and flowers daily and cable TV. There are two restaurants and the "Jardin D'Hiver" serves afternoon tea.

Mine Hotel *Boutique*

This boutique hotel is located in the heart of Palermo Soho, metres from Plaza Julio Cortazar and many other touristic points of the city such as La Boca, San Telmo and the Plaza de Mayo. With strong Thai influences mixed with modern elements, the ground floor is warmly decorated.

Legado Mitico *First Boutique*

Legado Mitico is a beautiful, boutique hotel in the trendy, bohemian quarter of Palermo Viejo, ideal for those who seek the authentic and sophisticated side of Buenos Aires. It feels welcoming, comfortable and stylish, with living room, dining room and only eleven guestrooms, each individually decorated with art and antiques in a classic style with modern touches.



De las Americas *Tourist*

A comfortable hotel situated in the heart of the Barrio Norte within walking distance of exclusive shops off the Santa Fe and 9 de Julio avenues. All 162 spacious rooms have private facilities, minibar, air conditioning and modern amenities. There is 24 hour room service, restaurant and bar.

Intersur Recoleta *First*

The Intersur is located in Recoleta district, with elegant, classically styled rooms, air-conditioning, restaurant and bar. There is a spa and gym, and free WiFi throughout.



Excursions available in Buenos Aires:

- San Telmo Antique Market
- Recoleta & Historical Monuments
- Remarkable Bars & Coffee Shops
- La Boca & Caminito
- Private Tango Lessons
- Typical Milongas by day & night
- Tango Shows
- Colon Theatre for Classical Music and Opera
- The Rio de la Plata Delta & El Tigre
- Learn about the life of Eva Peron
- Diego Maradona & Boca Juniors Stadium
- Football match at Boca Juniors Stadium
- Estancias & Gaucho 'Rodeos'
- Daytrip to Montevideo, in Uruguay
- Shopping for Argentine Leather
- Book & Antique Shops



PRICES FROM 4 days • 3 nights

BUENOS AIRES	
Alvear Palace Hotel	£738
Legado Mitico	£513
Mine Hotel	£421
Loisuites	£351
Intersur Recoleta	£277
De las Americas	£232

Prices are per person in a Standard Room for double occupancy including accommodation and Breakfast, tax, service charge and transfers. *Prices for Triple room, Single Room on request.

Additional Hotels available:
Alvear Art, Sofitel, Design Suites, Emperador, Pulitzer Boutique, Nuss, Four Seasons, Park Hyatt, Kenton Palace, Faena Hotel & Universe, San Telmo Suites and many others.

COUNTRY ESTANCIAS

web veloso.com/estancias

Dotted around the vast pampas are a number of delightful estancias with country houses that retain the elegance and charm of a bygone age, combined with the gaucho life of a working, cattle breeding ranch. The houses tend to be surrounded by parkland with lawns, big trees and a pool. Here you can relax, go horseriding, walk, watch gauchos at work or play polo and enjoy the tender meat in a mouthwatering barbecue.

Estancia La Bamba *Deluxe*



Estancia La Bamba de Areco is located close to the Pampa town of San Antonio de Areco with typical bar/restaurant, main square and the lifestyle of the Argentinian countryside. The property is essentially a country lodge and a gorgeous and romantic estancia. The original building opened in 1830 as a stagecoach stop along what had once been the old Camino Real, linking Buenos Aires with other colonial cities. The buildings are Pompeian red with white trim, contrasting with the

surrounding green landscape. The estancia accommodates 20 guests, and the social areas include a leisure room with TV and a swimming pool. Guests can experience the hacienda lifestyle through horse riding, walks, drives in carriages, bird watching, golf/tennis (8km. away) and lunch 'al fresco' under the trees. Guided tours to the village of San Antonio de Areco, Museum and Ricardo Güiraldes Creole Park can be provided at an extra cost. All meals are included.

Dining room at La Bamba



Typical Argentine grilled meat "Parrillada"

Bedroom at La Bamba



El Ombu *Tourist Superior*

El Ombu is a traditional, rustic Estancia converted into a country hotel with the feel of rural Argentina. The 12 rooms are all decorated with antique furniture, iron bedsteads and high ceilings. There is an outdoor pool and patio for relaxing, and guests can also walk or ride horses in the surrounding countryside. The food is rustic and hearty, and there are often demonstrations of folk dances.



PRICES FROM 4 days • 3 nights

COUNTRY ESTANCIAS	
Estancia La Bamba	£953
Estancia El Ombu	£841

Prices are per person in a Standard Room for double occupancy including accommodation and breakfast, tax, service charge and return transfers from Buenos Aires. Prices for Triple room, Single Room and child fares available on request.

Additional Hotels available: Bellavista Vista De Guerrero, La Bandada, La Isolina, and Polo playing and tuition at Puesto Viejo.

LAKE DISTRICT

web veloso.com/bariloche

BARILOCHE

Beautifully located on the southern shore of Lake Nahuel Huapi, where the towering Andes slope to the Patagonian plains, Bariloche is a paradise for walks and horseriding in the summer and skiing in winter. The alpine scenery varies from dense forests and snowcapped peaks to mountain rivers and the dry Pampa, all on a monumental scale. There is a variety of quality hotels in the town, and the airport has frequent flights. Upmarket and more characterful lodges are located further from the town along the shore of the lake.



The Lake District & Lake Nahuel Huapi

Llao Llao *Deluxe*

This internationally renowned, mountain lodge-style hotel has 160 rooms, all with private bathroom, telephone, cable TV and safety deposit box. Various excursions are available, and keen walkers will enjoy the many delightful walks that start close by. There is a health and fitness centre, an entertainment area, a spa and a golf course, and the excellent restaurant offers both regional and international specialities.

Design Suites *First*

Overlooking Nahuel Huapi Lake and set on the hillside, Design Suites Bariloche is a striking modernist hotel set within the forest. The main building has huge windows, giving amazing views from the restaurant and swimming pool and health club. Guestrooms are comfortable and modern, some with views over the lake. The hotel is a short distance from town but requires a car or taxi to get there.

Peuma Hue *Estancia*

Estancia Peuma Hue is a charming lodge set in 500 acres of wilderness on the shore of lake Gutierrez. The lodge is accessible from the town of Bariloche, but far enough away to offer a peaceful escape from civilisation. Accommodation is in rustic cabins, with exposed beams, wooden furniture and large windows for excellent views. There are trails through the forest and mountains for guests to explore, as well as horse riding and kayaks. Accommodation is on full board basis, and excursions are at extra cost.



VILLA LA ANGOSTURA

Perched on the northern shore of Lake Nahuel Huapi, Villa La Angostura is a smaller, quieter town with chic hotels and excellent dining. The Seven Lakes Road, running north, provides a huge range of options for daytrips, and nearby there is a rare forest of ancient Arrayan trees.

Las Balsas *Deluxe*



Las Balsas is a refuge of luxury, comfort and sophistication in the heart of the Lake District. Each room is decorated in warm colours with fine furnishings. The restaurant is a destination in itself, showcasing the flavours of Patagonia combined with an extensive wine cellar. Relais et Chateaux guarantees the highest standards of hospitality and service.

Huechahue *Riding & Fishing Estancia*

Estancia Huechahue is a traditional Patagonian ranch with 6000 hectares in the dry Pampa, where cattle and horses roam free and life is always an adventure. Riding is a way of life here, and gauchos work the herd on horseback, the traditional way, and are happy for guests to get involved. There is also access to excellent rivers for fly fishing. Guestrooms are warm with comfortable beds and private facilities, and the main house is welcoming and homely. Most of the food is produced on the property, and meals are served family style, with frequent Argentine Asado barbecues. Your hosts of British descent offer excellent hospitality and company, exhibiting a great love for the outdoors.

SAN MARTIN DE LOS ANDES

Further north, San Martin de los Andes is located on the shore of picturesque Lake Lacar and surrounded by the forests of the Lanin National Park. This is the northern end of the Seven Lakes Road, and the nearby Chapelco resort is excellent for skiing in winter, and has its own airport.

Hosteria Antares *First*

Situated a few steps from the shore of Lake Lacar on the edge of San Martin de los Andes, Hosteria Antares is a modern chalet-style lodge with warm wood and stone architecture and a homely, welcoming atmosphere. The 10 spacious suites are comfortable and cosy, all with air-conditioning. There is a sauna, jacuzzi and an indoor/outdoor swimming pool.



PRICES FROM 4 days • 3 nights

BARILOCHE	
Estancia Peuma Hue	£1026
Llao Llao	£517
Design Suites	£349
VILLA LA ANGOSTURA	
Estancia Huechahue	£1322
Las Balsas	£852
SAN MARTIN DE LOS ANDES	
Hosteria Antares	£386

Prices are per person in a Standard Room for double occupancy including accommodation and breakfast, tax, service charge and transfers. Prices for Triple room, Single Room and child fares available on request.



SELF DRIVE LAKE DISTRICT

Venture out of Bariloche into Argentina's Great Outdoors, along the picturesque Seven Lakes Road to explore the magnificent Lake District on your own with the hotels pre-booked, a road map and a hire car. Discover the smaller lakeside towns of San Martin de los Andes and Villa La Angostura, and make stops to walk in the stunning scenery of lush meadows, deep wooded valleys, emerald lakes and snow-covered peaks.



5 days • 4 nights

Day 1 On arrival at Bariloche Airport transfer to your hotel in **Bariloche** for 1 night at the hotel Alma del Lago. (B)

Days 2-4 You will be taken to the office to be briefed and receive your car. Hotels are booked along your route so you can drive making stops and detours. Stay at the picturesque village of **Villa La Angostura** (1 night Sol Arrayan Hotel), set on Lake Nahuel Huapi. Next day drive to **San Martín de los Andes** (2 nights Hosteria Antares) on Lake Lacar, where you can take walks in the woods round the lake shore. The Lanín National Park

is also ideal for walking and offers great views of the snow-capped peak of the Lanín Volcano. (B)

Day 5 Drive back to the Airport, return your car and depart. (B)



PRICES FROM 5 days • 4 nights

SELF DRIVE LAKE DISTRICT £897

Prices per person including private car (Fiat Siena, Renault Clio or similar) accommodation at first class hotels for 1 night in Bariloche, 1 night at Villa Angostura and 2 nights at San Martín de Los Andes, breakfast and assistance from local representatives. Extra nights can be arranged on request.

MENDOZA

Located at the foot of the Andes in Central Argentina, Mendoza is a charming city surrounded by the country's premier wine-producing region. Wide tree-lined avenues and handsome squares in the centre of town give way to a beautiful rolling countryside, filled with rows of vines and views of the snow-capped peaks. Relax and taste excellent wines at the vineyards, or make the breathtaking journey over the mountains to Santiago de Chile.

Park Hyatt *Deluxe*

Located on the central Independence Square in Mendoza, the Park Hyatt is a modern luxury hotel with plenty of facilities. Behind its restored 19th century colonial façade there are 186 rooms, all finished to a high standard. There are 4 restaurants offering different styles of food, and an outdoor sun terrace and pool.



Finca Adalgisa *Boutique*

Nestled among its own vineyards in Chacras de Coria, just outside the city of Mendoza, Finca Adalgisa offers characterful accommodation in a relaxed environment. Each room is decorated with original furniture, and has a kingsize bed, air-conditioning, private facilities and WiFi. There is a small pool, a restaurant where they prepare regular barbecues, and the wine is of a very high standard.



Cavas Lodge *Deluxe*



Located 30 minutes south of Mendoza, Cavas is a luxurious and elegant Wine Lodge with 18 rooms spread out through the vineyards. All rooms and villas are extremely spacious and comfortable with kingsize beds, private terrace, plunge pool and views of the mountains. Membership of Relais et Chateaux promises world-class service and cuisine at the lodge's restaurant, and there is also a spa offering a variety of treatments with vine and grape extracts.

PRICES FROM 4 days • 3 nights

MENDOZA

Cavas Lodge	£1,176
Finca Adalgisa	£455
Park Hyatt	£284

Prices are per person in a Standard Room for double occupancy including accommodation and breakfast, tax, service charge and transfers. Prices for Triple room, Single Room and child fares available on request. Supplement available on request.

Additional Hotels and Wineries:
NH Cordillera, Aconcagua, Club Tapiz, Posada Salentein and Huentala.



IGUAZÚ FALLS web veloso.com/iguazu

ARGENTINA



A myriad of waterfalls surrounded by forest

The Iguazú Falls are a truly extraordinary sight : Vast torrents of water thunder over a natural fault in more than 250 separate cascades to create an awe-inspiring spectacle. The Brazilian side offers a panoramic view while the Argentine side has three long walks on wooden walkways which take you through the forest, and above and below the waterfalls. Both sides have boat trips for an exhilarating, close-up (and very wet) experience. It is best to explore both sides of the falls, and take time to see the falls from all sides, and learn about the rainforest ecosystem, its flora and fauna.



La Cantera Lodge Tourist

Located in the forest outside of the town of Puerto Iguazú, and 15 minutes from the falls, La Cantera Jugle Lodge has rooms distributed in a series of bungalows connected by raised walkways. The rooms are spacious and wellappointed, with a balcony looking out into the forest as well as private facilities and air-conditioning. The hotel has a restaurant and a swimming pool with a terrace area for relaxing.



Gran Melia Deluxe

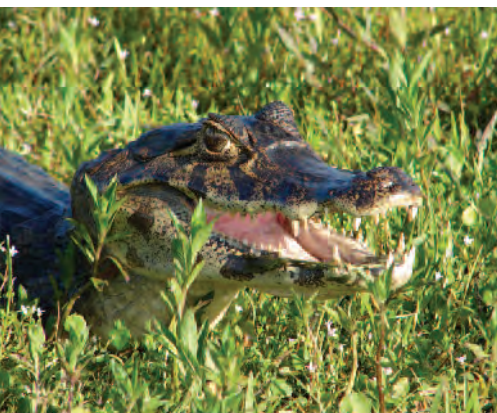
Set within the Iguazú National Park, the Melia hotel is a large building with spectacular views of the falls. Half of the rooms face towards the falls, and the other half face the rainforest behind the hotel. Its location within the National Park gives guests privileged access to the trails around the falls. The hotel has two restaurants and lounges, a swimming pool which shares the stunning views of the falls, a fitness centre and sauna.



IBERÁ WETLANDS & JESUIT MISSIONS

The Iberá Natural Reserve is the largest protected area in Argentina, a mix of swamps and lagoons which makes up the second largest wetlands in South America. Fed only by rainwater, the swamps are shallow and full of vegetation, providing a habitat for a huge array of wildlife. The boat excursions often go in search of marshland deer, maned wolf, caiman, otters, and many species of birds. The nearest airport is Posadas.

In the 17th Century the Jesuits established peaceful settlements of Guaraní Indians in an effort to convert them to Catholicism, educate and protect them from Portuguese slave hunters. The ruins of these missions, restored to show the European architecture and ornate stonework of the churches and cloisters, are spectacular evidence of this colonial history.



Puerto Valle Lodge

Located 55km from Posadas, Puerto Valle is easily accessible while standing on the edges of both the Iberá wetlands and the Paraná River. All 13 rooms are spacious, with private facilities and views of the river. Activities include boat trips on the wetlands to spot a huge variety of birds, as well as Capybarra and Caiman; boat trips along the river, horse riding and forest walks. The restaurant uses ingredients from the organic garden, and there is also a library and drawing room for relaxing.



PRICES FROM 4 days • 3 nights

IGUAZÚ FALLS	
Gran Melia	£602
La Cantera Lodge	£278
IBERÁ WETLANDS & JESUIT MISSIONS	
Puerto Valle Lodge	£1,085

Prices are per person in a Standard Room for double occupancy including accommodation and breakfast, tax, service charge and transfers.
*Puerto Valle Lodge includes accommodation, full board, excursions, transfers to/from Posadas Airport, tax and service.

*Additional Hotels at Iguazú Falls:
Das Cataratas (Brazil), Panoramic Iguazu, Iguazu Gran Casino, Esturion, Loisuities, Yacutinga , Aguape Lodge*



PENÍNSULA VALDÉS

The coastline of Peninsula Valdes is home to a remarkable variety of wildlife. Each year, Southern right whales come between June and December to breed, particularly in October and November, joining elephant seals, sea lions, Magellanic penguins and occasionally Killer whales. There are also large numbers of seabirds such as petrels, albatrosses and cormorants. All this incredible wildlife can be admired during boat trips into the bay, or walking excursions on the peninsula. The main town, Puerto Madryn, has a variety of accommodation, while the closest airport is in Trelew in Welsh Patagonia.

4 days • 3 nights

Day 1 Arrival in Trelew and transfer to your hotel in Puerto Madryn.

Days 2-3 Full day excursion to Peninsula Valdes a UNESCO protected area for the conservation of marine mammals. Southern Right Whales, Elephant Seals and Southern Sea Lions all have important breeding colonies here. Next day visit the Penguin Colony at Punta Tombo, and the Welsh town of Gaiman.

Day 4 Transfer to the airport for your flight to your next destination.



Territorio *First*

Located just outside the town of Puerto Madryn, the Territorio hotel is a modern construction with 36 comfortable and well-appointed rooms. Every room is spacious, with heating, air conditioning, free wifi, and stunning views over Golfo Nuevo Bay to Peninsula Valdes beyond. The hotel also has a spa and lounge bar, but no restaurant, and makes a good base from which to explore the area.

Las Restingas *First*

Overlooking the beach at Puerto Piramides, on Peninsula Valdes, La Restingas del Mar is perfectly placed to embark on whale watching boat trips, but otherwise remote with few amenities. The hotel is simple and homely, with only 12 rooms. Upstairs rooms each have a spacious balcony, while downstairs rooms have a terrace with direct access to the beach. There is a bar, restaurant, and terrace with lovely views.

SALTA & THE NORTHWEST

Salta and its surroundings are characterised by harsh and rugged desert landscapes full of deep gorges, wonderous rock formations and vivid earth colours. The dramatic scenery has much in common with the bordering Bolivia and Chile, with llamas, ancient ruins, Salt Flats and indigenous weaving communities. There is colonial history here too, with well preserved Spanish churches and cathedrals, town-houses and leafy squares.

5 days • 4 nights

Day 1 Arrival in Salta and transfer to your hotel. Guided tour of the city visiting the neo-classic Cathedral and the Historic Museum of the North, with exhibits of sacred art and rooms dedicated to the grand families of Salta. The Plaza 9 de Julio is an elegant colonial main square with gardens and lined with cafes, ideal for people watching.

Day 2 Full day tour, travelling south along the Lerma Valley passing historic towns to reach curious rock formations at the gorge Quebrada del las Conchas. Continue to Cafayate and visit vineyards famous for wine made from the Torrontes grape. Overnight in Salta. (B)

Day 3 Journey north to the Tastil Ruins and visit San Antonio de los Cobres ancient mining town. Continue to the immense Salt Flats at Salinas Grandes, where the thick crust of salt appears as a vast expanse of shining white desert. We descend to Purmamarca, with its lovely adobe houses and amazing views of the Hill of Seven Colours. Overnight. (B)

Days 4-5 Today we travel to the pre-Inca fortification of Pucara de Tilcara, and visit Uquia church with paintings of Arcabucero Angels. At Huamahuaca we visit the Indian Independence. Drive to Salta past abundant subtropical vegetation. Overnight in Salta and transfer to the airport. (B)



Legado Mitico *Deluxe Boutique*

Located near Salta's main square, Legado Mitico is a converted colonial-era mansion with 11 individually designed, characterful rooms. Sophisticated and stylish, there are books, paintings and armchairs throughout.

Manantial del Silencio

First Class

On the edge of Purmamarca, the hotel fits completely with the historic village aesthetic. Whitewashed walls and tiled floors, courtyard and garden, make for a comfortable stay in a characterful setting.

PRICES FROM	4 days • 3 nights
PENÍNSULA VALDÉS	£593
	5 days • 4 nights
SALTA & THE NORTHWEST	£546

Prices are per person based on two sharing a double room at a First Class hotel, transport, transfers, guided excursions with English-speaking guide. Breakfast, tax, service charge included.

Additional Hotels at Peninsula Valdes: Dazzler, Valdes, Tolosa, Solar de la Costa

Additional Hotels in Salta: Almeria, Solar de la Plaza, Virrey, House of Jasmine

PATAGONIA

EL CALAFATE

El Calafate is located on the shores of Lago Argentino, in southern Patagonia. It is the starting point for excursions to the main glaciers of the area such as Perito Moreno, Upsala and Onelli. For the more adventurous it provides access to El Chalten for Cerro Torre and Mount FitzRoy, Argentina's premier trekking areas. These small towns of double-pitched roofs and tourist facilities, always offer a friendly welcome to visitors.

CALAFATE & GLACIERS

4 days • 3 nights

Day 1 Arrival in Calafate and private transfer to the hotel for three nights. Take a stroll in the village. (B)

Day 2 Full day excursion by shared regular coach to the Perito Moreno Glacier. (B)

Day 3 Half day excursion on a regular, local boat service on Lago Argentino to the Upsala and Onelli Glaciers. (B)

Day 4 Private transfer to the airport. (B)



Walkways right in front of the Perito Moreno Glacier

Perito Moreno Glacier

The Perito Moreno Glacier is located 80 kilometres from Calafate, one of the many glaciers in Los Glaciares National Park. The first part of the journey crosses barren Patagonian steppe, but on reaching the national park the vegetation changes abruptly into forest dotted with shrubs and occasionally, the intense red of the notro, the typical flower of the Andean Patagonia. Los Glaciares National Park was created in 1937 to preserve an area of continental icefields and glaciers, declared a World Heritage Monument by UNESCO in 1981. The main attraction is the Perito Moreno Glacier, slowly eroding a valley between two hills on the side of a long narrow lake, so that the opposite bank is an ideal position to stand on land and view the glacier close to the massive front, measuring some five kilometres in width and 60 metres in height.

At times the glacier reaches the opposite bank of the lake and blocks the flow of water so you can watch the water break the ice. The sight of huge pieces of ice breaking off with a roar, then floating away as icebergs is truly unforgettable.



The rugged surface of the glacier

Glaciers, Lakes & Estancias

Embark on a comfortable boat from the port at Punta Bandera, boarding a state of the art vessel to cruise on Lago Argentino. Various half day and full day cruises sail along different arms of the lake, with the possibility of navigating among giant icebergs and seeing the magnificent Upsala Glacier, the largest glacier in the region, some 9km wide and 50km long. Spegazzini Glacier, at 130m tall, is the park's highest. Other options include crossing to the north side of the lake to visit Estancia Cristina, where guests can hike to viewpoints, have lunch and learn about the history of the pioneers. For hardy souls it is possible to stay overnight.



Optional to trek on the glacier



Hiking to the viewpoint at Estancia Cristina

View of the Perito Moreno Glacier close to the lakeshore



Xelena Suites First Superior

Located outside El Calafate on the shore of Lake Argentino, Xelena Suites has 71 spacious, modern suites with fine furnishings, all with lake views. The hotel has an excellent restaurant, a spa and an indoor-outdoor heated swimming pool overlooking the lake, perfect for relaxing at the end of the day.



Indoor heated swimming pool at Xelena Hotel



Fitz Roy, El Chalten



Room at Eolo Lodge

Eolo Lodge *Deluxe*



Located thirty minutes away from El Calafate, Eolo is a luxury lodge that embodies the spirit of Patagonia. All of its 17 suites are simply but beautifully furnished, with breathtaking views of the surrounding landscape. As a member of Relais et Chateaux, the lodge prides itself on world class service and cuisine. Your four day programme includes: full board, transfers, non-alcoholic drinks and activities: trekking, mountain bikes, bird watching, and stargazing.



Lounge with a view

Mirador del Lago *First*

Situated close to the centre of town as well as having views over the lake, the Mirador del Lago hotel is the ideal combination of location and comfort in El Calafate. Decorated with traditional Argentine touches, the guest rooms are spacious and comfortable, and some have lake views. There is a bar, a restaurant serving Patagonian specialities, and free Wifi throughout the hotel.

Kau Yatun *Tourist*

Kau Yatun Hotel de Campo is a countryside hotel in the style of a traditional ranch, set in 4 hectares of parkland, 10 minutes walk from the centre of El Calafate. The rooms are cosy and comfortable with traditional touches, individual heating and WiFi. There is a restaurant and bar, and it is located next to a working estancia so that guests can also see gauchos at work.

PRICES FROM 4 days • 3 nights

PATAGONIA	
Calafate & Glaciers	£543
Eolo Lodge	£1,724
Xelena Suites	£440
Mirador del lago	£318
Kau Yatun	£296

Prices are per person in a Standard Room for double occupancy including accommodation, tax, service charge, breakfast and transfers to/from Calafate.

**Eolo & La Quinta include transport to/from El Calafate, daily guided excursions with specialist guides.*

Additional Hotels: Altos de Calafate, Kosten Aike, Imago Hotel & Spa, Design Suites, Mirador del Lago, Kau Yatun, Los Sauces, Los Notros, Sierra Nevada, Estancia Alice El Galpon, Terrazas del Calafate

EL CHALTEN & FITZROY



Trekking at Fitzroy

From a scenic point of view Los Glaciares is one of the most impressive national parks in South America. The vast reserve that protects around 2,300 square miles of Patagonian Andes includes more than 40 major glaciers. The northern section of the park is dominated by the world-famous Fitzroy Massif, which rises 6,000 feet from the glaciers at its base. The mountains around the tiny village of El Chalten make it an essential stop-off for adventurous travellers. A variety of walks of different durations and degrees of difficulty are possible from here.

Los Cerros *First*

Situated on a hill with views over the town of El Chalten and towards mount Fitz Roy, Los Cerros hotel is the perfect base to explore the National Park and the excellent hiking trails. Constructed from stone, wood and other natural materials, the hotel has a rustic feel, while offering comfortable and spacious rooms. There is a bar and restaurant, and a tour desk which can advise on independent hiking routes. There is also a spa to relax after a long day's hike.

Los Cerros Hotel



TIERRA DEL FUEGO - USHUAIA



Los Naranjos *Tourist*

Located in central Ushuaia, Los Naranjos offers comfortable rooms with panoramic views of the surrounding Andean mountain range, the city or the Beagle Channel. All rooms have private facilities, free WiFi, and safe deposit box. The restaurant serves traditional Andean food as well as international dishes.

Los Cauquenes *Deluxe*

Situated on the edge of the Beagle Channel, Los Cauquenes Resort & Spa offers sophisticated, comfortable rooms with wonderful views. There is a gourmet restaurant and spa, and the hotel offers a range of excursions with its own guides to explore the surrounding landscape, including cruises on its own boat.

Located at the Southern end of South America, Ushuaia is a small port town perched on the edge of the Beagle Channel, the departure point for expedition cruises into the icy waters of Tierra del Fuego and the Antarctic Peninsula. The town is surrounded by National Parks for excellent walking, wildlife watching and a ride on the Southern Fuegian Railway.



PRICES FROM 4 days • 3 nights

TIERRA DEL FUEGO - USHUAIA

Los Cauquenes	£389
Los Naranjos	£283

Prices are per person in a Standard Room for double occupancy including accommodation and breakfast, tax, service charge and transfers.

PATAGONIA CRUISE SHIPS

Enjoy the relaxed atmosphere, walks ashore and stunning views along the myriad of remote islands and channels of Tierra del Fuego onboard the M/V Stella Australis or M/V Ventus Australis. Sister ships with large panoramic top decks, lounges and accommodation in comfortable cabins with picture windows and heating. Cruises include daily excursions ashore with naturalist guides, for treks on the islands and wildlife watching.

Stella & Ventus Australis *First Class Expedition Ships*

Especially designed and built to navigate the fjords and channels of Tierra del Fuego, Stella Australis and Ventus Australis are ideally suited to explore this magnificent region. They share the same layout and deckplan; both have stern platforms to easily board the zodiacs for the excursions on the islands. Each has capacity for a maximum 200 passengers in 100 comfortable cabins, all with central heating, private facilities and picture windows. The majority of the cabins

are the same size - the difference in the grades is the deck number. On decks 3 and 4 there are several 'Superior' cabins which are a little more spacious. There are 3 lounges, all with comfortable seating and large windows to enjoy the views. The cruises include all meals and all drinks, and daily guided excursions ashore by zodiac. There are activities for all levels, with some challenging hikes, and easier options for those who want to take it easy.



Cabin on the Australis



Lounge on upper deck on the Australis



PATAGONIA EXPEDITION CRUISES

web veloso.com/australis

Cruise through the icy waters and stunning fjords of Tierra del Fuego, via the Straits of Magellan and the Beagle Channel. Admire snowcapped peaks, glaciers and Patagonian forest, and visit the most inaccessible reaches of South America.

PUNTA ARENAS - USHUAIA

4 nights / 5 days



Day 1 Board the ship in the afternoon for a cocktail reception with the captain, and depart in the evening for Tierra del Fuego.

Day 2 In the morning arrive at Ainsworth Bay where we go ashore to spot birdlife and hike to a beaver habitat deep in the forest. Later we visit Tucker Islet's colonies of Magellanic Penguins and King Cormorants.

Day 3 Sail through the Beagle Channel to Pia Glacier. Morning ashore with optional hikes through the forest to a vantage point with a spectacular panoramic view of the entire glacier. Later in the

Excursion ashore on Wulaia Bay, Navarino Island, with the M/V Australis waiting in the distance



Contemplating the awe-inspiring Pia Glacier

Cape Horn on a rare calm and sunny day



afternoon we continue on the majestic "Glacier Alley". Sip a drink on the top decks as we sail past five unique glaciers.

Day 4 Visit Cape Horn National Park, a UNESCO Biosphere Reserve. To visit this mythical island known as the "End of the Earth" is a rare privilege. Later, we reach Navarino Island and go ashore at Wulaia Bay, where Charles Darwin and Captain Fitzroy reached local tribes in 1830s. Choice of three hikes through Magellanic forest for spectacular scenery and views of the bays.

Day 5 Arrival in Ushuaia in the morning.

USHUAIA - PUNTA ARENAS

4 nights / 5 days



Day 1 Board the ship in the afternoon for a cocktail reception with the captain, before the evening departure for Tierra del Fuego.

Day 2 In the morning arrive at Cape Horn National Park, where we land (weather and sea permitting). In the afternoon we go ashore at Wulaia Bay. There are three hikes from easy to hard.

Day 3 Sail through the Beagle Channel to reach Pia Glacier, where we go ashore. There is a choice of hikes: easy along the shore or steep, to a stunning viewpoint. Later we sail long "Glacier Alley", sipping a drink on deck and viewing five glaciers, one of which is the Francia Glacier stretching across the hill top and with a torrent of water cascading down to the fjord. One of only a few glaciers still gaining mass.

Day 4 This morning we enter Agostini Sound, and take an easy walk around a lagoon formed by Aguila Glacier. Later we approach Condor Glacier on zodiacs, and hope to see some majestic Andean Condors.

Day 5 Visit Magdalena Island at dawn (weather permitting) to see a colony of Penguins. Disembark at Punta Arenas.



Getting close to an iceberg

PRICES FROM

SEASON	LOW	HIGH
PUNTA ARENAS - USHUAIA		
USHUAIA - PUNTA ARENAS		
Cabin type B	£1,328	£2,148
Cabin type A	£1,773	£2,875
Cabin type AA	£1,858	£3,052

All prices are per person including transfers to/from Ushuaia or Punta Arenas airport, cabin of your choice, full board (B,L,D), open bar and guided excursions. All Inclusive.

SEASONS:
High - January to February
Low - March to December

Glaciers in Tierra del Fuego



CHILE