

ECUADOR & GALAPAGOS

web Photographs and information: veloso.com/ecuador

Ecuador, named after its position on the Equator, boasts Amazon, Andes, Pacific coastline and the Galápagos Islands. This stunning archipelago, Darwin's living laboratory of evolution, provides unique opportunities for viewing wildlife at close range.



ECUADOR

Ecuador is composed of four distinct regions: the Amazon basin to the east, the Andean highlands running down the centre of the country, the Pacific coastline to the west, and the archipelago of the Galapagos Islands 600 miles out into the Pacific Ocean. There are many outdoor markets, country haciendas, churches and religious ceremonies, making it a pleasure to observe the character of the people. The seldom visited coastline is home to wild beaches, while the small Inca archaeological site at Ingapirca in the south is evidence of a long history and ancient regional connections with Peru.

Galápagos Islands

The Galapagos is an archipelago of volcanic islands, distributed on either side of the equator in the Pacific Ocean, 600 miles from mainland Ecuador. This isolation, and the distance between the islands themselves, led to the evolution of species on separate islands, but with marked differences. Darwin's observation of this process led him to his famous scientific discoveries. The wildlife is unafraid of people, to the point that one can get remarkably close to birds and iguanas, and swim with playful sea lions.

Andean highlands

Colourful Indian markets in remote villages rest amongst Andean landscapes of soaring cones of snow-capped volcanoes. The towns and people retain a distinctive identity with fascinating blends of Inca and colonial influences

Amazon Rainforest

The legendary Amazon is home to hundreds of species of mammals, thousands of birds and insects, many endemic to Ecuador. Ancient trees, some over 400 years old, tower above, entangled with thick lianas and supporting a huge variety of bromeliads. Wildlife apart, this is also a cultural experience, where we meet local communities who share their intimate knowledge of their surroundings, the medicinal properties of plants and their unique relationship with the jungle.

CONTENTS

HACIENDAS & QUITO	117-119
ANDEAN EXCURSIONS	120-121
<u>PICHINCHA TOUR</u>	122
<u>BELLAVISTA TOUR</u>	123
<u>PRIMAVERA TOUR</u>	124-125
AMAZON	126-127
GALAPAGOS CRUISES	128-137



HACIENDAS & HORSERIDING

3 days • 2 nights

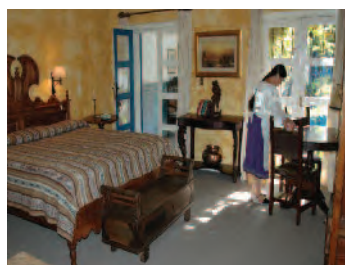
To step into **Hacienda Zuleta** is to step back in time, where you can experience four centuries of Ecuadorian history steeped in Spanish and Ecuadorian tradition. Located in the mountains north of Quito, surrounded by the natural beauty of the Andes, the seventeenth century hacienda still has a working farm set in 4000 acres of grounds, complete with its own vegetable gardens, dairy farm and trout pond and riding stables with over 100 horses. Decorated with antique furniture and typical Ecuadorian weavings, every guest room has a fireplace, with cosy living and reading rooms. You can stay for 2 or more nights or visit on a full day tour from Quito.

Horseriding is a speciality at Zuleta, with lessons available for complete beginners through to advanced level. Other activities can include mountain biking, walking trails in the mountains to appreciate the beautiful scenery, hiking nearby volcanoes, visits to the ancient archaeological site of Caranqui, cooking with the Hacienda's chef, traditional Ecuadorian embroidery, and bird watching for Andean Condors.

PRICES FROM

HACIENDA 3 days • 2 nights	£777
Full day Horseriding	£186
Full day Culture & History	£118
OTAVALO 2 days • 1 night	£381

Prices per person including private transport toll from Quito, all meals and guided activities.



INDIGENOUS MARKETS & OTAVALO



Otavalo Market

The Andean valleys to the north and south of Quito are a landscape of snow covered mountains, lakes and terrace farmland. The colourful village markets are famous for their fine handicrafts and bustle with local people trading farm produce, cloth and household goods. The most famous of these is the **Indigenous market of Otavalo**, which dates back to pre-Inca times and is well-known for its textiles. Its narrow cobbled streets fill with Otavalo locals in their distinctive costume of blue poncho, white trousers and long, braided hair.

2 days • 1 night / Friday

Day 1 From Quito we drive along beautiful valleys past dairy farms and rose plantations to the small town of Calderón. Next we visit Peguche and San Antonio de Ibarra to see local wood carving, and continue to Cotacachi, a centre of leather working. Overnight at one of the haciendas near Otavalo. (L,D)

Day 2 Visit the colourful and bustling market in Otavalo. There is ample time to shop and wander around. Return to Quito in the afternoon. (B)



QUITO

web veloso.com/quito

Quito is located on a plateau at the foot of Pichincha volcano. Colonial architects built the formidable churches, monasteries and mansions which caused the city to be designated a World Heritage Site by UNESCO. Visit St. Augustine Convent & the Parliament Buildings, whose stone mural depicts the history of Ecuador. The main square is flanked by the Cathedral, the Presidential Palace, Municipal Building and the Archbishop's Palace. Nearby the church of San Francisco is one of the great religious buildings of the New World, Baroque influenced by Moorish style.

Excursions available in Quito:

- **City Tour** of the colonial centre, with narrow cobbled streets, large squares, Spanish architecture and impressive Baroque churches.
- **Cablecar Ride** up the Pichincha Volcano, viewing Quito from above
- **'Middle of the World' Monument** and Museum of Equator.
- **Walking Day Trips** outside the city, including: Cotopaxi National Park, Antisana Volcano Reserve, Cuicocha Crater Lake, Page 125



Street view in old Quito



Sao Francisco Convent



The Cathedral

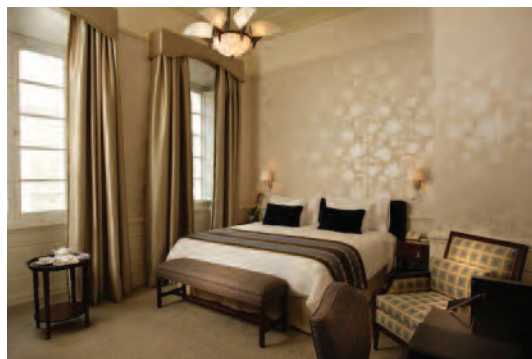


Character architecture with courtyard

QUITO HOTELS



Casona de La Ronda Hotel



Mama Cuchara Hotel

Casona de La Ronda First

This delightful 22 room hotel has been converted from an original Colonial townhouse. It is an oasis of tranquility, located on the pedestrian La Ronda street in the centre of Old Quito and close to many bars and restaurants. The rooms are comfortable and decorated with fabrics and patterns from local communities. The hotel also has a small lounge and fireplace, and serves local cuisine and Ecuadorean wines.

Cultura Manor Boutique

This famous house used to be an exclusive private club. It has been carefully restored in a large investment in maintaining the unique characteristics of the original house and interior. The rooms and suites are spacious (50 m2 and over) with beautiful bathrooms, wooden floors and ceiling beams and some have frescos on the walls. There is a wonderful homely sitting room and a gourmet restaurant with excellent cuisine using organic ingredients.

Casa Gangotena Deluxe

Casa Gangotena is a Colonial mansion located in the heart of Old Quito, right on Plaza San Francisco. It has been recently converted into a sumptuous deluxe boutique hotel, and is one of the finest in Quito. The hotel's 31 rooms are a sophisticated meeting of classic architecture, high ceilings, fine antique furniture, and modern amenities. The hotel restaurant serves Ecuadorean and international cuisine, made from the finest local ingredients, served by diligent staff.

Mama Cuchara Boutique First

Located in the historic centre of Quito, the Mama Cuchara Hotel is a famous colonial house that has been renovated and modernised in a local decor style. The rooms have wooden floors, carved headboards and structural ceiling beams. The restaurant offers a gourmet selection of homely Ecuadorean cuisine. On the roof, there is a terrace and cocktail bar, with a magnificent view of the city.

PRICES FROM	4 days • 3 nights
QUITO	
Casa Gangotena	£790
Mama Cuchara	£391
Casona de La Ronda	£343
Cultura Manor	£284

Prices are per person in a Standard Room for double occupancy including accommodation, breakfast, transfers to/from Quito Airport.
*Price for Triple room, Single Room, Christmas, New Year, National holidays available on request.

Additional hotels in Quito: Ikala, Patio Andaluz, Marriott, Swiss, Dan Carlton, Hilton Colon, Casa Aliso, Plaza Grande, Carlota, Illa Experience

CLOUD FOREST

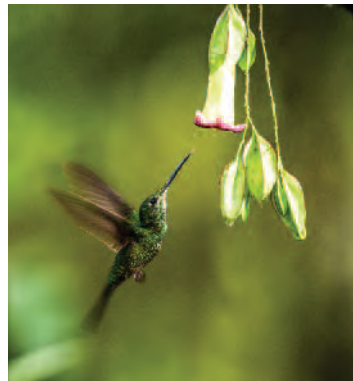
Ecuador's Choco cloud forest is one of the world's biodiversity hotspots. Located two hours west of Quito by road, the forest covers a range of altitudes from 900m to 2500m above sea level, and is part of the UNESCO Biosphere of the Andean Choco. It is home to a huge range of wildlife, including a great number of birds, including hummingbirds, making it popular with bird watches. New plant and animal species are still being discovered. The reserves are a great place for a daytrip from Quito to discover natural ecosystems, or stay at one of the excellent lodges, to be able to hike in the forest, spot birds and marvel at the forest-covered mountain scenery.



The Cloud Forest

Mashpi *Deluxe*

Three hours by road from Quito, into the heart of the forest, Mashpi Lodge is set within its own 2500 acre private reserve. The lodge is the perfect base for discovering the Ecuadorean cloud forest, surrounded by nature. The modern design of metal and glass blends surprisingly well into the surroundings, while floor-to-ceiling windows allow a close view of nature from every room. Rooms and suites are comfortable with all modern conveniences, and the dining is of the highest standard. Daily excursions are led by the onsite naturalist guides, all on an à la carte basis, so guests can choose their activities each day. Excursions range from early morning birding walks, hikes to nearby waterfalls, admiring the view from the 30m observation tower, or taking an exhilarating ride through the forest canopy on the sky bike. There is a resident biologist actively researching the forest, and they have identified several new species including the Mashpi Magnolia and the Mashpi frog. **Accommodation includes all transport, meals, soft drinks and guided activities.**



Empress Hummingbird



'Tayra' Giant Weasel



Mashpi Lodge

Full Day Tour

Two hours northwest of Quito we reach the valley of Tandayapa and the Bellavista Lodge cloudforest eco-system. Enjoy a walk with your naturalist guide pointing out many species of plants including several with medicinal properties; and help you to spot and identify birds. You can see several species of hummingbirds, butterflies, reptiles & mammals. Later in the afternoon return to Quito. (L)



Crimson Rumped Toucanete

Bellavista *Tourist*

Established in the 1990s by a British owner, Bellavista Lodge sits inside its own 2000 acre private reserve. The lodge is rustic, but rooms are spacious and well decorated with local crafts. The reserve has a network of trails and daily guided hikes to explore the forest, spot birds and other wildlife, and marvel at the scenery. Guests can explore the trails independently too. There are easy trails, but some paths are steep. **Accommodation includes all meals and shared transport to and from Quito.**

Tandayapa *Tourist*

Tandayapa is a specialist birding lodge, with all the knowledge and expertise required to indulge your passion for bird watching. Accommodation is simple but comfortable, with 12 rooms, a spacious lounge and balcony overlooking the forest. There is a canopy deck, a forest floor feeding hide, and hummingbird feeders, where guests can watch and wait for the huge variety of bird life. Tanagers and toucans are also commonly seen. **Accommodation includes all meals and shared transport to and from Quito.**



Blue Winged Tanager

PRICES FROM

MASHPI	
3 days • 2 nights	£1081
BELLAVISTA	
3 days • 2 nights	£364
Full Day Tour	£107
TANDAYAPA	
3 days • 2 nights	£1038

Prices per person including transport to/from Quito, accommodation and meals as shown. English-speaking guide/Naturalist Guides at Bellavista and guided excursions as described are also included. Transfers to Bellavista are in shared transport but private transfers can be arranged at additional cost.

AVENUE OF VOLCANOES



Cotopaxi

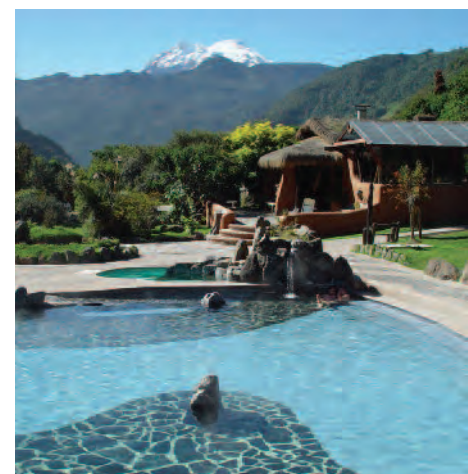
Cotopaxi National Park is an ecological sanctuary of 36,000 hectares surrounding the highest active volcano in the world, and is a paradise for walkers who enjoy the high altitude landscape. Located only two hours from Quito, Cotopaxi is an ideal area for nature lovers who may see llamas, wild horses, deer, rabbits and frogs, as well as the various species of birdlife, including the majestic Andean condor. We can offer full day tours to Cotopaxi from Quito, as well as overnight stays at Hosteria Runtun, which also includes a visit to local markets.

Antisana & Termas de Papallacta

Day 1 Depart eastward from Quito through the verdant valleys of Tumbaco and Puenbo. At the village of Pintag, the eastern range of the Andes rises towards the majestic paramo of Antisana. This private reserve starts at cloudforest level, dominated by bamboos and bromeliads, past the amazing lava flows of Antisana Volcano. The plateau is crowned by La Mica Lake which teems with bird life: caracaras, lapwings, Andean condors and hummingbirds. Continue to the hacienda and hike with the snows of

Antisana as a pristine backdrop. After lunch in the Protected Area, drive on to the exclusive Termas de Papallacta Resort and Spa. Visit the paramo and the Andean forests of Papallacta. (L,D)

Day 2 This morning there is ample time to relax in the thermal baths. There are various pools of different temperatures in a beautiful natural surrounding. After enjoying the wonderful healing properties of the thermal waters return to Quito in the afternoon. (B)



Hot springs and pool

AVENUE OF VOLCANOES TOUR

Cotopaxi, Train journey, Cuenca, Cajas, Guayaquil

5 days • 4 nights

Day 1 Depart south from Quito along the Avenue of the Volcanoes, enjoying the incredible landscape of snowcapped mountainous volcanoes, valleys with small villages, farms and homesteads. Stop to visit the Cotopaxi National Park taking a short walk at the base of the volcano. Continue along the Andes, a colourful drive passing several indigenous villages. Depending on the day of the week, we may visit the local markets at Latacunga or Pujili, where local folk trade their farm produce. At Salasaca weavers make carpets, tapestries and alpaca sweaters. Overnight in Riobamba. (L, D)

Day 2 Early start to board the Devil's Nose "locomotora" (rail-bus) from Alausi to Sibambe and back. Descend this impressive rail segment admiring dramatic

mountain scenery. Continue on the road south visiting the Ingapirca archaeological site with Inca stonework fitting perfectly with no gaps. Two nights in Cuenca. (B,L)

Day 3 Full day visit to the Gualaceo and Chordeleg Valleys, a mountain landscape dotted with lagoons, streams and small villages with ancient churches. (B,L)

Day 4 Morning tour of Cuenca, a UNESCO World Heritage city. Visit the colonial cathedral and main square. Depart towards Guayaquil on the coast, visiting the Cajas National Park on the way. Arrive in the evening and overnight.

Day 5 Transfer to Guayaquil airport for your onward journey. (B,L)



Mountain landscapes

TIERRA DEL VOLCAN

Hacienda Porvenir Highlands Adventure

Experience the Andean mountains, discover the charisma of its people and stunning landscapes, with expert guides and homely accommodation.

You have a personalised service, mountain adventure, a welcoming environment, while helping nature conservation and sustainable development of local communities.

There are two working haciendas in the area surrounding Cotopaxi National Park:
Hacienda El Porvenir
Hacienda El Tambo

Hacienda El Tambo is at higher altitude, more basic and remote, for highland trekking and horseriding.



Trekking and horseriding in the mountains

Hacienda El Porvenir is ideal for families and individuals looking for a remote mountain adventure location.

The farmhouse is a working ranch located in a scenic area, dedicated to sustainable agriculture, conservation, cattle farming and ecotourism.

The buildings are made from local building materials, keeping traditional Andean construction and distributed around a large central courtyard.

There are three room types:

- Suites are spacious rooms with all facilities and superb mountain views.
- Traditional rooms have twin beds, private facilities, hot shower, heating
- Machai, is a glamping experience in a hut and made of local woven hand-knitted totora, known as estera.

There is a broad range of tours and activities available, such as:

- Horseriding while experiencing the culture of the Chagra (cowboy).
- Mountain biking through ancient volcanic terrain at Cotopaxi.
- Trekking the mountain trails while enjoying the magnificent scenery.
- Climbing impressive peaks.

PRICES FROM

ANTISANA & TERMAS DE PAPALLACTA	
2 days • 1 night	£381
AVENUE OF VOLCANOES TOUR	
5 days • 4 nights	£1134
TIERRA DEL VOLCANO	
2 days • 1 night	£365
3 days • 2 nights	£535

Prices per person including transport to/from Quito, accommodation and all meals, English-speaking guide and excursions as described.

CUENCA

Cuenca is an old city from pre-Inca and colonial times and UNESCO World Heritage site. The centre has narrow streets with cobblestones, the main Plaza and parks with gardens, ideal for walking and absorbing the local atmosphere. Visit El Carmen Monastery founded in 1682, the Old and the New Cathedrals, numerous Museums and several markets. Outside the city, Chordeleg and Gualaceo are renowned for artisans, weavers, embroiderers and potters.

Santa Lucia First

Boutique, character hotel located in the city centre, decorated with antiques, tapestries, paintings and offering a homely environment. The building is dated from 1859 and the hotel has been family owned and managed for three generations, together with the excellent restaurant Villarosa. The bedrooms are modern and comfortable and the hotel has the traditional restaurants La Placita, and Moshi Moshi with an Oriental decor.

Mansion Alcazar Deluxe

This historic house dates back to 1705, but recently re-opened its doors as a boutique hotel with 18 comfortable rooms. Located close to the Plaza Independencia, the house has preserved its original details, while adding all the modern amenities you would expect from a high class hotel. The furniture is made by Ecuadorean artisans, and there are many original paintings. The hotel also has a coffee shop, a superb Spa to unwind, a gourmet restaurant and bar.



Cuenca Festival

GUAYAQUIL

Founded in 1538, it is the main port, commercial and business centre of the country, as Quito is the political and government capital. It is located on the coast next to the Guayas river. As such it is busy and hot, with the interesting, Parque Centenario, main square, and most of all with a long waterfront promenade by the river, the Malecon, with cafes, restaurants, shopping and entertainment where local people come for a stroll in the fresh air, by day and night. Visit the artesan market for something special to bring back at the end of your trip.

Del Parque Deluxe

RELAIS ET CHATEAUX Luxury group. Renovated 19-century property in a quiet park, and surrounded by gardens. The hotel has an excellent restaurant, bar and beautiful bedrooms with all amenities.

Wyndham First

Located in downtown and close to airport, this 4 star hotel is an excellent base to explore the city and waterfront "malecon".



Pedestrian street in Guayaquil

RAINFOREST AND THE ENCHANTED ISLES

The Pichincha Tour

14 night itinerary:

Quito - 2 nights

Amazon - 3 nights

Quito - 2 nights

Galápagos Cruise - 7 nights

web veloso.com/pichincha

Visit a tropical paradise to observe exuberant vegetation and friendly wildlife and wonder at the mysteries of life on earth. This tour includes the Amazon rainforest, the stunning Galápagos Islands, and an insight into the colonial charm of Quito and surrounding mountain countryside. A relaxing tour of beautiful landscapes, exuberant rainforest, diverse wildlife, and local markets.



Experience the vastness of the Amazon rainforest, Days 3 to 5

Days 1-2 Departure flight to Quito on Wednesday (Tourist) or Sunday (First), arriving the same evening. The next day we visit Otavalo, embracing an area of snow-capped mountains, lakes and

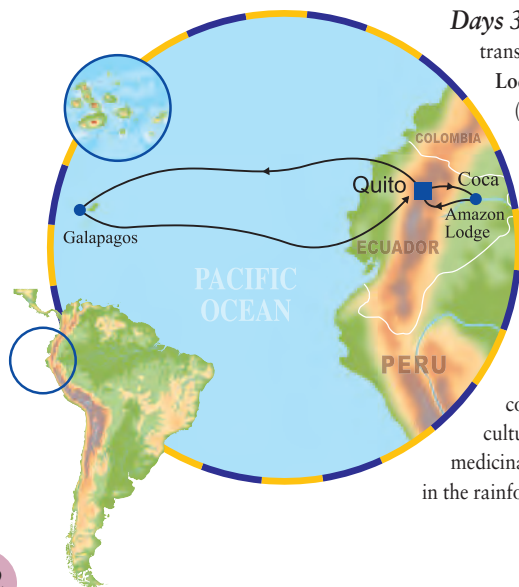
terraced farmland. Visit the local tourist market where men and women with long plaited hair, dressed in their traditional clothes, sell all types of weavings, tapestries and handicrafts. (B)

Days 6-7 Return to Quito for 2 nights. Next day, we tour the old part of the city, San Francisco square, Presidential Palace, churches in colonial architecture and we visit the Gold Museum. (B)

Days 8-14 Flight to the Galápagos Islands where Darwin observed the wildlife that would lead him to his theory of evolution by natural selection. Basking marine iguanas, waved albatrosses, blue and red footed boobies, giant land tortoises, and friendly sea lions abound. We cruise for 7 nights with guided excursions every morning and afternoon, walking, swimming and snorkelling, accompanied by expert Naturalist guides who explain all about the diverse wildlife and delicate ecosystems of the islands. First Class cruises on M/V Beluga page 136, and Tourist Class cruises on M/V Cachalote as shown on page 136. (B,L,D)

Day 15 Return flight to Guayaquil connecting with your flight home, arriving the following day, Day 16. (B)

The Pichincha Tour departs Wednesday (Tourist), or Sunday (First), returns Thursday or Monday, INCLUDING: 14 nights accommodation, all flights (1 overnight), all transfers plus guided excursions, transport and meals (B,L,D) as shown on the itinerary. Please see pages 190 - 193 for further details of what is included.



Days 3-5 Flight to Coca and transfer by canoe to your Amazon Lodge, Napo (First) Yasuni (Tourist) see page 133, staying for 3 nights. We paddle in canoes along narrow creeks, observe the exuberance of vegetation in primary rainforest and hike under the dense tree canopy. We visit a local Amazon village where we meet people of the Anangu community, who share their culture, knowledge of farming, medicinal plants and their way of life in the rainforest. (B,L,D)

PRIVATE INDIVIDUAL TOUR GUIDELINE PRICES

	Tourist			First		
	1 Single Traveller	Travelling Together Double	Own Room	1 Single Traveller	Travelling Together Double	Own Room
PICHINCHA Tour						
1Jan-30Jun, 6Sep-15Dec	£6041	£4517	£5587	£9350	£6345	£8464
1July-5Sep, 16Dec-31Dec	£6367	£4843	£5913	£9676	£6671	£8790
BELLAVISTA Tour						
1Jan-30Jun, 6Sep-15Dec	£6928	£5605	£5905	£9433	£6296	£8410
1July-5Sep, 16Dec-31Dec	£7254	£5931	£6231	£9759	£6622	£8736

GUIDELINE TOUR PRICES are all per person, subject to availability, as all services are booked when you pay your deposit. Please refer to our website veloso.com for current prices and any special offers available. To obtain a Guaranteed Price for your travel dates, please call 020 8762 0616, email travel@veloso.com, or contact our appointed travel agents. Prices for Special Events, New Year's Eve, Christmas, Easter on request.

FLIGHTS on IBERIA or LAN departing from London and UK Airports, Internal Flights and Taxes, are included. UPGRADE to Business Cabin seat add: £1805 in High Season / £2105 in Low Season

HOTELS used, descriptions and photographs on our website, veloso.com/pichincha & veloso.com/bellavista

TAILOR-MADE SERVICE: Please enquire for a personalised itinerary to fulfil your individual requirements. We can combine hotels, change route, excursions and we can offer triple rooms, suites and De Luxe Hotels.

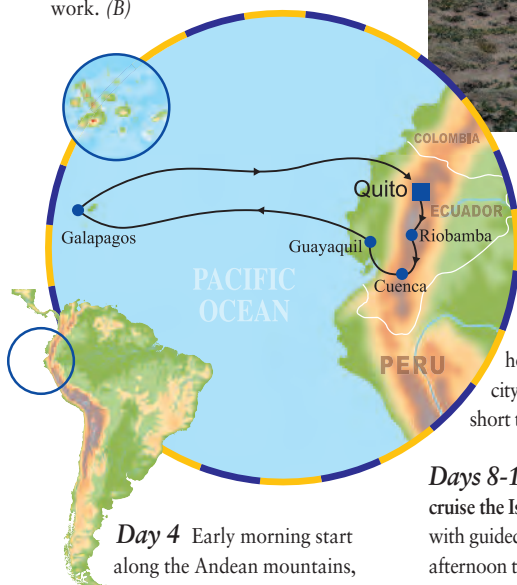
ANDEAN LANDSCAPES AND THE ENCHANTED ISLES

Explore the rich culture and dramatic mountain landscapes of the Andes and the fascinating Galápagos Islands, teeming with friendly wildlife. We visit colonial cities and mountain villages, surrounded by dramatic snow-capped volcanoes and ride a train along a steep ravine. Browse through local markets where people display their produce, antiques and intricate weavings.

Days 1-3 Departure on Sunday (First) or Tuesday (Tourist) on a daytime flight to Quito, staying for 3 nights. The next day we take a tour through scenic streets of the historical part of the city, admiring the colonial squares, architecture, museums and an exquisite Baroque-style church. On Day 3 we journey into the mountain countryside to visit the village of Otavalo and its market. A colourful affair, people dressed in traditional clothing sell handicrafts. We also visit the surrounding villages to see weavers at work. (B)



Avenue of Volcanoes starting in Quito, Day 4



Day 7 Journey into the mountains through the Cajas National Park, stopping on the way to walk, enjoy the scenery dotted with lagoons, and have a typical lunch at a small hosteria. Continue to the coastal city of Guayaquil, where we take a short tour and stay overnight. (B,L)

First Class cruises on M/V Beluga shown on page 136 and Tourist Class cruises on the M/V Cachalotte Explorer also on page 136. (B,L,D). On Day 15, fly back to the mainland and connect with the overnight flight home, arriving Day 16.

The Bellavista Tour PRICES PAGE 122. Departs Sundays (First) or Wednesdays (Tourist), INCLUDING: 14 nights accommodation, breakfast (B), all flights (1 overnight), transfers, transport, guided excursions & meals as shown. See pages 190 - 193 for details of what is included.

Days 8-14 Flight to the Galápagos and cruise the Island Archipelago for 7 nights with guided excursions every morning and afternoon to walk on the islands, swim or snorkel, and to see the wildlife up close.

Day 4 Early morning start along the Andean mountains, stopping at a local hacienda. Visit the indigenous market at Latacunga or Saquisillí, and continue along the Avenue of the Volcanoes, affording views of the towering snow-capped peaks, valleys and villages, arriving at Riobamba to overnight. (B,L)

Day 5 Transfer to the railway station for a spectacular train journey along mountainsides and precipices on the Devil's Nose Railway. Continue to Cuenca, visiting the fascinating hillside Inca fortress of Ingapirca en route. (B,L)

Day 6 Tour of the charming colonial city of Cuenca, with its cobbled streets and tree-lined squares, visiting the flower market, the magnificent cathedral, and the Panama hat workshop. (B)



The Bellavista Tour

14 night itinerary:

Quito - 3 nights

Riobamba - 1 night

Cuenca - 2 nights

Guayaquil - 1 night

Galápagos Cruise - 7 nights

web veloso.com/bellavista



Birdwatching at close range, Days 8-14



Traditional hats in Cuenca Day 6

Land Iguana on an excursions ashore on the Galapagos Islands, Days 8 to 14



GALAPAGOS, AMAZON, VOLCA

The Primavera Tour 19 night itinerary:

Quito - 2 nights
 Amazon Lodge - 4 nights
 Quito - 1 night
 Riobamba - 1 night
 Cuenca - 3 nights
 Guayaquil - 1 night
 Galapagos Cruise - 7 nights

web veloso.com/primavera



Close encounters with friendly locals, Days 13-19

Embrace nature in the rainforest, the wildlife of the Galápagos Islands and Andean mountain landscapes. On this tour, you will view wildlife at close range and experience an insight into fascinating cultures, from those who live in jungle communities, to people who survive in little villages by painstakingly weaving their intricate designs on traditional looms.

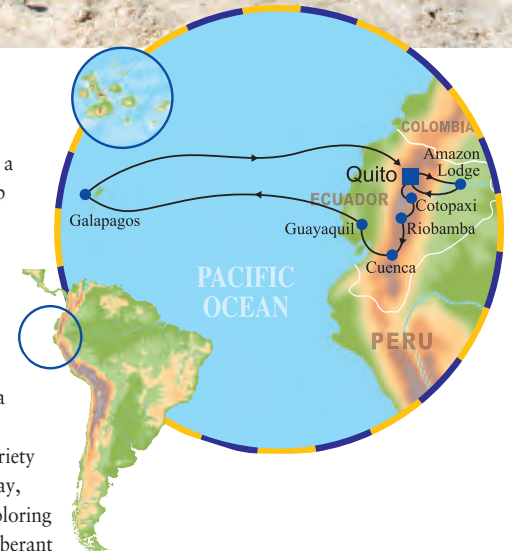
Day 1 Early morning departure flight to Quito on **Saturday** (Tourist) or on **Wednesday** (First), arriving the same day in the evening local time. Your guide and transport will meet you at the airport to brief you and take you to your hotel staying for 2 nights.

Cathedral of Inmaculada, Cuenca, Day 11



Day 2 Morning departure out of town, past dramatic mountain scenery to the market town of Otavalo, where locals sell weavings and handicrafts. Return to Quito to explore the colonial quarter with its narrow cobblestone streets, colonial churches, and **Archaeological Museum** housing pre-Colombian ceramics, gold and ancient artefacts. (B)

Days 3-7 Our day starts with a flight into the Amazon and a trip up river to the **Napo Wildlife Centre** (First Class), or **Napo Cultural Centre** (Tourist Class) (Please see page 127), located in the peace and tranquility of virgin rainforest in the **Yasuni National Park** and overlooking a lagoon. From here our resident naturalist guides take us on a variety of hikes, both by night and by day, canoeing trips up creeks and exploring the rainforest to observe the exuberant vegetation and the vast, dense tree canopy. It may be possible to visit the parrot clay lick, bursting with the activity of brightly coloured birds. (B,L,D). Flight back to Quito on Day 7, staying for 1 night. (B)



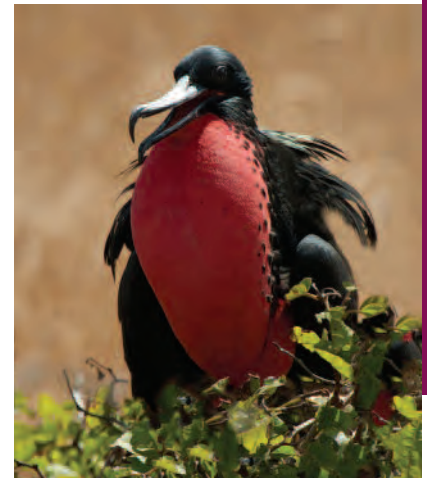
Day 8 Visit to **Cotopaxi Volcano**, set in the wild páramo of the National Park. Continue through the Andean Mountains, along the so called “Avenue of Volcanoes”, to a village where local weavers demonstrate their skills on the traditional shuttle looms, and onto **Riobamba**, to enjoy its thermal springs, surrounded by mountains. (B,L)

Days 9-10 An early start to ride on the **Devil’s Nose Railway**, along the impressive switchbacks and through dramatic mountain scenery. We continue south to **Cuenca**, a charming colonial city. On the way we stop at the small Inca archaeological site of **Ingapirca**. Next morning day excursion out of the city to the fertile **Gualaceo valley** and **Chordeleg**, passing remote villages and farmsteads amidst gently rolling hills. (B,L)

NOES & MARKETS



Napo Amazon Lodge, Days 3-7



The richly decorated interior of La Compañía Church

Days 11-12 Morning tour of Cuenca including a Panama Hat factory and La Inmaculada cathedral. Next day journey to Guayaquil (1 night), stopping for a walk in the Cajas National Park. (B,L)

Days 13-19 Morning flight to the Galápagos Islands for a 7 night cruise, where Darwin observed the wildlife that would lead him to his theory of evolution. Basking marine iguanas, blue and red footed boobies, waved albatrosses, frigate

birds and friendly sea lions abound. Daily morning and afternoon walks along island trails with your Naturalist guide. First Class cruises aboard M/V Beluga as shown on page 136, and Tourist Class cruises aboard the Cachalote Explorer motor yacht also on page 136. (B,L,D)

Day 20 Flight back to the mainland and connect with our return flight home, arriving the following day, Day 21. (B)

The Primavera Tour departs Saturday (Tourist) or Wednesday (First), returns on Thursday (Tourist) or Monday (First), INCLUDING: 21 days, 19 nights' accommodation in standard rooms and cabin, breakfast (B), all flights (1 overnight), transfers, excursions, English-speaking guides, transport and meals as shown. Please see pages 190 - 193 for further details of what is included.

The lake region north of Quito



Colourful sally lightfoot crab



Land Iguana

PRIVATE INDIVIDUAL TOUR GUIDELINE PRICES - Departs Saturday or Wednesday

	Tourist			First		
	1 Single Traveller	Travelling Together Double	Own Room	1 Single Traveller	Travelling Together Double	Own Room
PRIMAVERA Tour						
1Jan-30Jun, 6Sep-15Dec	£8010	£6457	£6780	£11523	£7589	£9751
1July-5Sep, 16Dec-31Dec	£8336	£6783	£7106	£11849	£7915	£10177

GUIDELINE TOUR PRICES are all per person, subject to availability, as all services are booked when you pay your deposit. Please refer to our website veloso.com for current prices and any special offers available. To obtain a Guaranteed Price for your travel dates, please call 020 8762 0616, email travel@veloso.com, or contact our appointed travel agents. Prices for Special Events, New Year's Eve, Christmas, Easter on request.

FLIGHTS on IBERIA or LAN departing from London and UK Airports, Internal Flights and Taxes, are included. UPGRADE to Business Cabin seat add: £1805 in High Season / £2105 in Low Season

HOTELS used, descriptions and photographs on our website, veloso.com/primavera

TAILOR-MADE SERVICE: Please enquire for a personalised itinerary to fulfil your individual requirements. We can combine hotels, change route, excursions and we can offer triple rooms, suites and De Luxe Hotels.

AMAZON

web veloso.com/amazonecuador



Excursions in the rainforest. The staff paddle canoes on some trips so you can hear the amazing sounds of the wildlife

The Ecuadorean Amazon is one of the most accessible places to visit the rainforest in South America with a 45 minutes flight from Quito to the city of Coca, located on the shore of the Napo river - one of the tributaries of the Amazon. Travel by canoe to one of the excellent nearby lodges, or board a comfortable river cruise to explore the rainforest in style. All lodges and cruises include daily excursions with expert naturalist guides, all transportation and meals. This part of the Amazon is known for pink river dolphins and the endangered Manatee.

Manatee

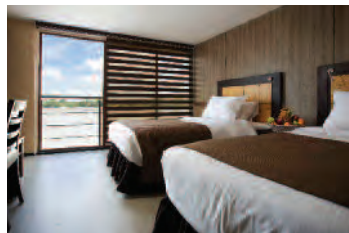
The Manatee is a riverboat providing an ideal opportunity to visit the Amazon rainforest in comfort and at a slow pace. The Manatee has three decks with dining room, topdeck observation "alfresco" lounge area and bar and individual cabins with air- conditioned cabins, private facilities and hot water for a maximum of 30 passengers. She has expert naturalist guides for the daily excursions ashore. The Manatee navigates the Napo River, stopping en route for you to hike and take canoe trips to see the forest and local villages, accompanied by the naturalist guides to explain the ecosystems.



Cabin on the Manatee

Anakonda

Anakonda is the only luxury riverboat in the Ecuadorean Amazon. Visit remote and pristine areas of rainforest and discover the region's 15 local communities, while enjoying the comforts and services of a boutique hotel on the water. Anakonda is 148 feet-long and takes a maximum 40 passengers. The 18 spacious suites have seating areas, large and comfortable beds, and wall-to-wall panoramic windows. You will enjoy fine dining and a topdeck observation deck with bar and "alfresco" lounge, which are ideal places to have a cocktail, or simply enjoy the spectacular view of the rainforest as it floats past.



Cabin on the Anakonda



The M/V Anakonda



Forest walks



Cuisine onboard



Optional excursion

Prices per person including transfers to/from main hotels in Quito, return flights from Quito to Coca all transport by bus and motorised canoe in the Amazon, accommodation, English-speaking guide, full board and excursions as shown. Yasuni National Park fee of USD20 is not included.

PRICES FROM	3 nights	4 nights
AMAZON CRUISE		
Manatee	£2048	£2463
Anakonda	£2449	£2964

Napo Wildlife Centre

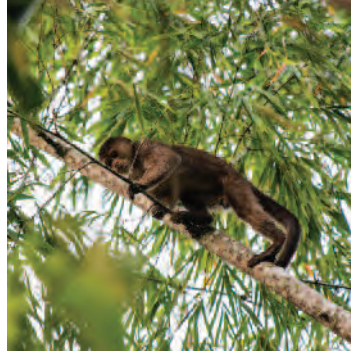
The Napo Wildlife Centre offers a selection of beautiful, comfortable thatched cabañas with private facilities, plus dining and seating areas. This lodge includes the conservation of over 53,000 acres of the most pristine Amazon Rainforest within the Yasuni National Park, the largest biosphere reserve in Ecuador. You will be met at Coca airport and taken to the bank of the river Napo for the two hour journey by motorised canoe to the Lodge. Once you arrive and settle into your room you will have a programme of daily guided excursions and walks to experience the exuberance of the Amazon rainforest.



Napo Wildlife Centre



Giant River Otter



Capuchin Monkey



Young Hoatzins have hooked claws on their wings



Room at Napo Wildlife Centre

Napo Cultural Centre

Experience the rainforest staying with the Yasuni Kichwa community village on the south bank of the Napo River. The hotel allows you to learn about the interesting culture of a people that has always lived in the forest. Local English speaking guides take you on excursions, showing a fascinating practical knowledge of the forest. You can also interact with the people going on excursions in the jungle, rivers and stream, and experience the canopy observation tower and clay lick where macaws and parrots congregate. The lodge is located two hours by canoe downriver from Coca airport. It is a hotel

within the community and can take a maximum of 40 guests in comfortable, spacious cabins with private facilities and balconies with a hammock, safe deposit box, hot water, ventilation, plugs to charge batteries and mosquito nets. There is a large dining room with thatched roof: the feedback is that the food is excellent.



Sacha Lodge

Sacha Lodge is set on a private reserve of 1300 hectares close to the Napo River. Guests fly from Quito to Coca and are taken to the river port to continue downriver by motorised canoe. You then walk along a raised boardwalk through dense flooded palm forest to Pilchicocha Lake, where dugout canoes await to carry you to the Lodge. All cabins have high thatched roofs and private shaded terraces, including the restaurant and bar. Each of the 26 bungalow provides a private bathroom with flushing toilet and hot shower. All cabins are screened

against insects, and have ceiling fans, but not air-conditioning. Guided excursions include walks in the rainforest, paddle dugout canoes, night walks and canoe trips. The lodge also has an observation tower and a canopy walkway, over 30m tall. Climb into and above the rainforest canopy for a magnificent view of the dense vegetation around the lodge. From the walkway it is possible to see diverse bird species and wildlife such as monkeys and sloths. There is also a butterfly house for the breeding and study of butterflies.



PRICES FROM	3 nights	4 nights
AMAZON		
Napo Wildlife Center	£1406	£1648
Napo Cultural Center	£1024	£1148
Sacha Lodge	£1319	£1576

Prices per person including transfers to/from your hotels in Quito, return flights to/from Coca, all transport by bus and motorised canoe in the Amazon, accommodation, English-speaking guide, full board (all meals) and daily excursions.

GALAPAGOS EXPLORATION CRUISES

THE GALAPAGOS ISLANDS

Admire the tame wildlife of the Galápagos Islands where Darwin developed his theory of evolution by natural selection. The Galápagos are located in the Pacific Ocean, directly on the equator and 600 miles off the coast of Ecuador. Here you can walk alongside the abundant wildlife thriving on the nutrients brought by a warm water current from the north which collides with a cold current from the south.

THE WILDLIFE

Most of the species are endemic so they can be seen throughout the year. Our website has an approximate calendar of the Cycle of Nature; for example, the sea lions have their pups from August to October. It is possible to swim with the juvenile sea lions all year except October and the Albatrosses nest on Hood Island from April to November. From July to September there is more wind and the water is cooler. In September the sea is quite choppy so it is the least attractive time to visit, and it is when several boats go into dry dock for maintenance.



THE YACHTS

You stay onboard your chosen yacht as a means to travel between the islands with no packing and unpacking. The yachts cruise at night so you can have daily walks ashore in the morning and afternoon. Please take in consideration that being on a Galápagos Cruise means that you are in the Pacific feeling the movement of the sea; the boats have noise and vibration from machinery (engines, generators, desalination plants, ventilation) and space in the cabins and public areas is restricted considerably depending on the yacht.

THE EXCURSIONS

For the excursions ashore, you will be accompanied by a guide following well-defined paths so that the wildlife is not disturbed and the consequences of human presence are minimised. Whichever boat you choose, the group ashore will not exceed 16 passengers per guide (this number may be lower depending on the season and the size of your yacht) and the landings are staggered so that you explore in small groups. There are few piers so you need some agility to step ashore onto rocks or beaches, in wet and dry landings off the tenders.



DARWIN TOUR

GALAPAGOS CRUISE, UK FLIGHTS & HOTEL IN QUITO - 9 NIGHTS

Exploration Cruises	No. of Passengers	Price from	Page	Departure from UK	Category
Origin & Theory	20	£8008	p131	Friday	Deluxe
Endemic	16	£7442	p132	Friday	Deluxe
Grace	16	£7336	p130	Sunday	Deluxe
Ocean Spray Catamaran	16	£7238	p131	Thursday	Deluxe
Evolution	32	£6728	p135	Thursday	Deluxe
Solaris	16	£5884	p132	Sunday	First
Mary Anne	16	£5536	p133	Thursday	First
Beluga	16	£5216	p136	Wednesday	First
Galapagos Legend	100	£4856	p134	Saturday & Tuesday	First
Cachalote Explorer	16	£4578	p136	Monday	Tourist
Samba	14	£4566	p133	Sunday	Tourist

DARWIN TOUR - Price per person includes **Flights** from London to Quito and back, with one change of plane (there are no direct flights to Ecuador). The flight out is either daytime, arriving in the evening, or overnight. The return flight is overnight, arriving in the UK the following day in the afternoon. Please enquire for HIGH season prices and upgrades to Premium Economy and Business cabin seats. The Galapagos National Park fee of US\$120 per person is extra.

Day 1 Fly to **Quito**, on arrival you will be met by our guide and taken to the **Casona de La Ronda Hotel** for 2 nights' accommodation including breakfast.

Day 2 Sightseeing **tour of Quito**.

Day 3-10 Transfer to the airport and fly to **Galápagos**, to board your selected yacht above, for a **7 night cruise** including accommodation in a **standard cabin** for double occupancy, all meals and daily excursions with Naturalist Guides. Each yacht has two seven night itineraries that alternate every two weeks. We provide a **full detailed itinerary** with a guaranteed price, descriptions, flight times for your chosen dates of travel and yacht. Further details and photographs of each yacht on pages 130 to 136

Day 10 Fly back to mainland to connect with the overnight flight to London Arriving **Day 11**. UK regional airport departures available on request.

TWO WEEK GALAPAGOS CRUISES: We can offer 14 nights cruising the Galápagos Islands on board a number of yachts allowing for an extensive itinerary, visiting more islands at a leisurely pace.

GRACE *Deluxe* [web veloso.com/grace](http://web.veloso.com/grace)



M/Y Grace is named after her last owner, Her Serene Highness Princess Grace of Monaco: a representation of elegance, beauty and prestige. Grace is the ideal yacht for those who seeks a true safari experience, complimented with excellent service and dining.

M/Y Grace offers spacious staterooms of up to 19 square metres (209 square feet) to accommodate 16 guests. The two Master Suites, two Twin Suites and 5 Premium Staterooms feature private bathrooms, individual climate controls and plenty of storage space for clothing and luggage. Bathrooms have all the essential amenities, hair dryers and ample space to store toiletries.

The Grace also has a cruise director onboard. The yacht has spacious public spaces inside, as well as 'al fresco' dining areas, sun deck, library, bar-salon, kayaks, and a jacuzzi.



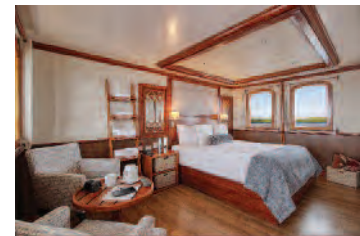
7 night itinerary 'Darwin's Footsteps'

- Tue** Baltra Airport, Las Bachas
- Wed** Prince Philip's Steps, Darwin Bay (Genovesa)
- Thu** Espumilla Beach, James Bay (Santiago Island)
- Fri** Tagus Cove (Isabela Island), Punta Vicente Roca
- Sat** Punta Espinosa (Fernandina) Urbina Bay (Isabela)
- Sun** Elizabeth Bay Punta Moreno (Isabela)
- Mon** Charles Darwin Station Highlands (Santa Cruz)
- Tue** Los Gemelos, Baltra Airport



7 night itinerary 'Beyond Darwin's Footsteps'

- Tue** Baltra Airport, Los Gemelos Highlands, Charles Darwin Station (Santa Cruz Island)
- Wed** Floreana Highlands Punta Cromorant (Floreana)
- Thu** Punta Suarez Gardner Bay (Española)
- Fri** Punta Pitt, Isla Lobos Kiker Rock (San Cristobal)
- Sat** Santa Fe & South Plaza Islands
- Sun** North Seymour Bartomole Island
- Mon** Chinese Hat & Dragon Hill
- Tue** Black Turtle Cove, Airport



PRICES FROM

SEASON	LOW	HIGH
Premium Cabin	£6030	£6730
Suite Cabin	£6270	£6970
Master Suite Cabin	£6670	£7370
Grace Kelly Cabin	£7070	£7770

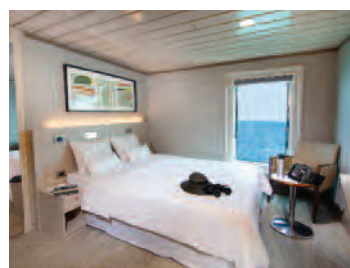
SEASONS: **Low:** Rest of the year
High: December to February

Prices per person sharing a standard cabin including flights from/to Guayaquil to Galapagos, accommodation in your chosen cabin for double occupancy, all daily guided excursions, full board, wet suits and snorkelling equipment. Park fee of US\$100 per person is extra

LA PINTA *Deluxe* [web veloso.com/lapinta](http://web.veloso.com/lapinta)



La Pinta offers a relaxed yet lavish experience, with the highest standards of service. She accommodates up to 48 passengers in 24 spacious twin or double cabins, all with panoramic windows, private bathrooms and comfortable fittings. Social areas include a lounge, bar, dining room, library, and a large sundeck with both shaded and unshaded areas. There is also a jacuzzi for the use of all guests. La Pinta also has a large outside area for 'al fresco' dining, a glass bottom boat and kayaks..



Eastern 4 night itinerary

- Thu** Baltra airport, South Plaza
- Fri** Santa Fe, San Cristobal
- Sat** Punta Pitt, Cerro Brujo (San Cristobal)
- Sun** Punta Suarez, Gardner Bay (Española)
- Mon** Darwin Research Centre, Baltra Airport (Santa Cruz)

Northern 4 night itinerary

- Mon** Baltra Airport, Giant Tortoise
- Tue** Eden Islet, Chinese Hat
- Wed** Bartolome, Sullivan Bay
- Thu** Darwin Bay, Prince Philip's Steps (Genovesa)
- Fri** Baltra Airport

Combine for 8 night cruise

Western Islands 6 night itinerary

- Fri** Baltra Airport
- Sat** Punta Vicente Roca, Isabela Punta Espinoza, Fernandina
- Sun** Tagus Cove (Isabela), Urbina Bay
- Mon** Rabida Island Dragon Hill, (Santa Cruz)
- Tue** Charles Darwin Station Giant Tortoise Reserve (Santa Cruz)
- Wed** Port Office Bay Punta Cormarant (Floreana)
- Thu** Baltra Airport

PRICES FROM

SEASON	LOW	HIGH
4 Night Itinerary	£3770	£4003
6 Night Itinerary	£5092	£5416
8 Night Itinerary	£7231	£7503

SEASONS: **Low:** Rest of the year
High: December to February

Prices are per person including return flights from Guayaquil to Galapagos, accommodation in a cabin for double occupancy, guides, excursions, full board (drinks extra). Galapagos National Park fee of US\$100 per person is extra.





M/Y Origin & Theory are identical sister yachts with modern sleek design and the superb standard of Relais & Chateaux. They take a maximum of 20 passengers in 10 air-conditioned cabins, all on the main deck, with large windows, twin or double beds; 2 cabins can have an extra bed. Cabins have a sitting area, DVD player, TV, iPod dock, safe deposit and bathroom with shower, toilet, hand basin, hair dryer, toiletries and bathrobes. The crew includes 2 naturalist guides for the daily excursions

ashore and expert briefings. These ships are spacious with several outside sitting areas, some shaded, others in the sun, jacuzzi, hammocks, sunbeds. The sun deck has a bar, barbecue and offers delightful lunch alfresco. There is a library, gym and small shop and a dining room and lounge with large windows on both sides. You have kayacs and paddle boards, snorkeling equipment, wet suits and a glass bottom boat. The cuisine is excellent and open bar is included.



**7 night itinerary
'Northern & Western' Route**

- Sun** Puerto Baquerizo Airport
Cerro Colorado Visitor Centre
- Mon** Prince Philip's Steps,
Darwin Bay (Genovesa)
- Tue** Las Bachas (Santa Cruz),
Cerro Dragon
- Wed** Punta Vicente Roca,
Urbina Bay (Isabela)
- Thu** Punta Espinoza (Fernandina)
Tagus Cove (Isabela)
- Fri** Rabida Island
Puerto Egas (Santiago)
- Sat** Charles Darwin Station
Los Gemelos (Santa Cruz)
- Sun** San Cristobal Airport

**7 night itinerary
'Southern & Central' Route**

- Sun** Puerto Baquerizo Airport
El Junco (San Cristobal)
- Mon** Cerro Brujo, Punta Pitt
(San Cristobal)
- Tue** Punta Suarez, Tortuga Rock
Gardner Bay (Espanola)
- Wed** Punta Cormarant
Post Office Bay (Floreana)
- Thu** Puerto Ayora, Los Gemelos
Charles Darwin Station
(Santa Cruz)
- Fri** Bartolome, Sombrero Chino
- Sat** South Plaza Island
North Seymore Island
- Sun** San Cristobal Airport

PRICES FROM

SEASON	LOW	HIGH
Stateroom Beagle Deck	£6550	£7210

SEASONS: **Low:** Rest of the year
High: December to February

Prices are per person including return flights from Guayaquil to Galápagos, accommodation, guides, excursions, all inclusive of food, drinks, gratuities and Galapagos Park Fees.



Ocean Spray is a luxury catamaran, offering exceptional comfort and service in a spacious, stylish and relaxed environment. With their twin hulls, catamarans are often wider than yachts, giving plenty of internal space without a large increase in overall size of the vessel. She accommodates 16 passengers in 8 double cabins (there is also one single cabin). Each cabin has large picture windows, individual balcony with seating, private facilities and air-conditioning. There is an indoor dining room as well as an outdoor area for 'al fresco' dining, and a large sun deck with jacuzzi. An expert naturalist guide leads daily excursions onto the islands, and there are also kayaks.

7 night Western itinerary

- Sat** Baltra Airport,
Chinese Hat
- Sun** Punta Vicente Roca (Isabela),
Punta Espinoza (Fernandina)
- Mon** Tagus Cove (Isabela),
Urbina Bay
- Tue** Elizabeth Bay, Punta Moreno
(Isabela)
- Wed** Darwin Research Station,
Twin Craters (Santa Cruz)
- Thu** South Plaza, Santa Fe
- Fri** Punta Suarez, Gardner Bay
(Española)
- Sat** Puerto Baquerizo Moreno
Airport

7 night Central itinerary

- Sat** Puerto Baquerizo Moreno
Airport, Isla Lobos
- Sun** Punta Pitt, Cerro Brujo
(San Cristobal)
- Mon** Post Office Bay, Punta
Cormorant & Devil's Crown
(Floreana)
- Tue** Black Turtle Cove, Bartolome
- Wed** Darwin Bay, Prince Philip's
Steps (Genovesa)
- Thu** Espumilla Beach, Buccaneer
Cove (Santiago)
- Fri** North Seymour, Santa Cruz
Highlands
- Sat** Mosquera Islet, Baltra Airport

PRICES FROM

SEASON	LOW	HIGH
Standard with Balcony	£5933	£6376

SEASONS: **Low:** Rest of the year
High: December to February

Prices are per person including return flights from Guayaquil to Galápagos, accommodation in a cabin for double occupancy, transfers, transport, naturalist guides, daily excursions, full board. Galápagos park fee of US\$100 per person is extra



CAMILA *Deluxe*



web veloso.com/camila

Camila is a luxury trimaran, stable and slick, with 8 cabins with balconies on the main and upper decks for a maximum of 16 passengers. She has an ample Sun deck with a jacuzzi, a large living room, bar and restaurant serving international cuisine. The yacht has a crew of 10 plus cruise director and Naturalist Guides to take you on daily excursions ashore. There are kayaks, wet suits and snorkeling gear.

Departs every Saturday for 7 nights

Prices per person sharing a cabin inc. flights

8 days • 7 nights	Low	High
Cabin with balcony	£5488	£5922



ENDEMIC *Deluxe*



web veloso.com/endemic

The Endemic luxury catamaran is spacious with balcony, large bathroom and windows as shown in the picture on the right. The overall design and decoration is light, sleek and modern. She has eight double cabins for a maximum of 16 guests. There is a large sun deck and an expert naturalist guide for daily excursions ashore and briefings.

Departs every Sunday

Prices per person sharing a cabin inc. flights

8 days • 7 nights	Low	High
Golden Suite	£5916	£6480



SOLARIS *First*

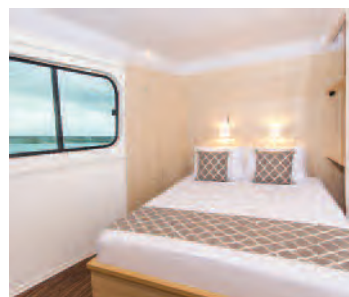


web veloso.com/solaris

The Solaris has single, double and triple occupancy cabins for a maximum of 16 guests. The single cabins offer excellent value with a minimal supplement and triple cabins are great for families. The decor is light and bright in the cabins, dining and sitting area. You also have a naturalist guide for the daily excursions ashore

Departs every Tuesday - Prices per person sharing

8 days • 7 nights	Low	High
Standard Cabin	£4586	£4946



PASSION *Deluxe*

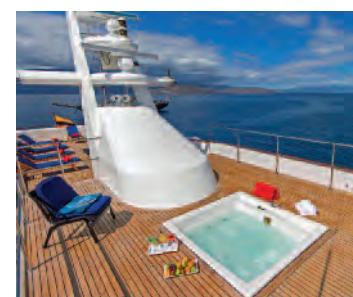
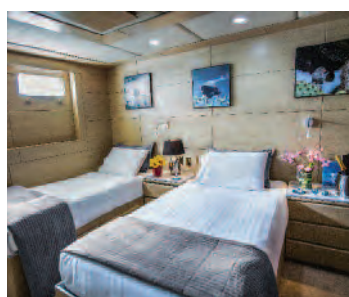


web veloso.com/passion

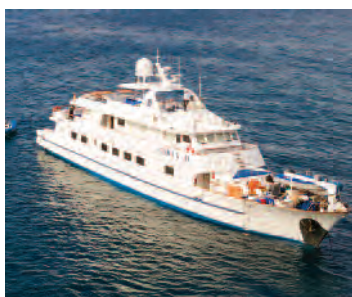
The Passion is a spacious yacht taking a maximum of 14 passengers in five cabins with a bathroom that has a shower and a bath, plus two suites that also have a lounge sitting area. Inside, the dining room and sky lounge have large windows and glass doors. She has an outdoor deck and sundeck with sofas. You also have a naturalist guide, kayaks and snorkeling. Departures every Saturday

Prices per person sharing a cabin

8 days • 7 nights	Low	High
Stateroom Cabin	£4546	£4973



CORAL I & II *First*



web veloso.com/coral

The Coral I & II are motor-yachts with a capacity of 36 and 20 guests respectively. The cabins are located on 3 decks, all with twin lower berths, private facilities, air-conditioning, with portholes or picture windows. There is also a jacuzzi at the stern, and a large sun deck on the top. An expert naturalist guide takes you on daily excursions.

Departs Wednesdays and Sundays

Prices per person sharing a cabin inc. flights

8 days • 7 nights	Low	High
Standard Cabin	£3308	£3593
Standard Plus Cabin	£4031	£4360



SEAMAN JOURNEY *Tourist*

web veloso.com/seaman



Seaman Journey is a spacious catamaran with 8 cabins for 16 passengers. Upper deck cabins have a balcony and have a double bed; main deck cabins have two single beds. There is a lounge with a bar and dining room and a sun deck with a covered area for lunch "alfresco". The naturalist guide will take you on daily excursions ashore in the morning and afternoon

Departures every Friday

Prices per person sharing a cabin inc. flights

8 days • 7 nights	All Year	
Standard Cabin	£3967	
Superior Cabin	£4717	



TWO WEEK CRUISES:
ALL THE YACHTS LISTED CAN ADD ITINERARIES TOGETHER TO OFFER LONGER CRUISES.

SEASONS

High: Easter, July/August, 15 Dec to 8 Jan
Low: Rest of the year

All prices per person in a cabin for double occupancy including return flights from Guayaquil to Galapagos, accommodation in your chosen cabin, Galapagos guides, excursions and full board (drinks are extra). Galapagos tax of USD100 is not included.

Prices for itineraries of 3 nights, 4 nights, 5 nights, 6 nights and longer on request. Prices for single and triple cabins on request.

BONITA *First*

web veloso.com/bonita



The Bonita has been renovated in a traditional style with light woods in the cabins and main areas. She has nine cabins on three decks, some with upper and lower berths, for a maximum of 16 passengers, and some with windows, others with portholes. Most of the day is spent on the twice daily excursions ashore with the naturalist guide, or on the sundeck enjoying the views.

Departs every Sunday - Prices per person sharing

7 days • 6 nights	Low	High
Standard Cabin	£2512	£3073
Superior Cabin	£2662	£3260



MARY ANNE *First*

web veloso.com/maryanne

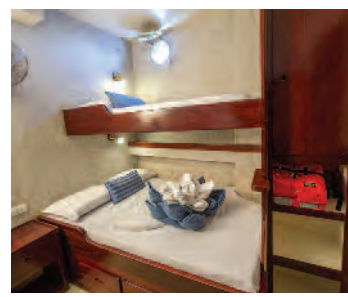


With almost 1000 square metres of sail, Mary Anne is an elegant motor-sailing yacht offering a genuine windjammer sailing experience with plenty of deck space. She accommodates 16 passengers in 12 cabins, each with private bathroom, air-conditioning, some with double beds and some with upper and lower berths. View the full itinerary on our website

Departures Saturdays for 7 nights

Prices per person sharing a cabin inc. flights

8 days • 7 nights	Low	High
Standard Cabin	£3646	£4635



BEAGLE *Tourist*

web veloso.com/beagle



The Beagle is a old-fashioned sailing and motor yacht for a traditional yachting experience. Renovated in 2019, she takes up to 13 passengers in 6 double cabins and 1 single cabin, all with lower double and upper single berths. The crew looks after the ship, all meals and drinks and the naturalist guide takes you on daily excursions ashore.

Departures every Tuesday

Prices per person sharing a cabin inc. flights

8 days • 7 nights	Low	High
Standard Cabin	£3511	£3835



SAMBA *Tourist*

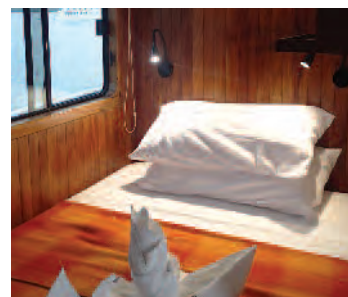
web veloso.com/samba

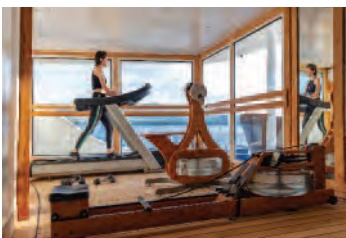


The Samba is a 78ft steel-hulled yacht, accommodating 14 passengers in 7 double cabins with upper and lower berths, all with private facilities. She has a spacious salon for briefings, leisure and dining and plenty of outdoor deck space. There is a crew of five and a naturalist guide for excursions.

Departs every Tuesday - Prices per person sharing

8 days • 7 nights	Low	High
Standard Cabin	£3271	£3571





GALAPAGOS LEGEND *First*

web veloso.com/legend

The Galapagos Legend is a spacious ship for up to 100 passengers, with a large outdoor area with sun deck, bar, two Jacuzzis and swimming pool. Up to 6 expert Naturalist Guides take you ashore in small groups of up to 16 guests on daily excursions, morning and afternoon. Two breakfast and two barbecue dinners alfresco on the upper deck. The cabins are comfortable and modern, located on four decks, all with lower berths and private facilities. 3 cabins are interior, the others have either panoramic windows, portholes or private balconies.

7 Night Itinerary II

- Mon** Baltra Airport, Bartolome
- Tue** South Plaza, North Seymour
- Wed** Punta Pitt, Cerro Brujo
- Thu** Cerro Colorado, Frigate Hill, San Cristobal Visitor's Centre
- Fri** Gardner Bay, Punta Suarez (Española Island)
- Sat** Punta Cormorant, Devil's Crown (Floreana Island)
- Sun** Santa Cruz Highlands, Eden Darwin Research Centre
- Mon** Punta Carrion, Baltra Airport



7 Night Itinerary I

- Mon** Baltra Airport, Twin Craters, Tortoise Reserve, Santa Cruz
- Tue** Prince Phillips's Steps, Darwin (Genovesa, Tower Island)
- Wed** Dragon Hill, Santa Fe Island
- Thu** Bachas Beach, Mosquera Islet (Santiago Island)
- Fri** Egas, Santiago Island Rabida Island
- Sat** Urbina Bay, Tagus Cove (Isabela Island)
- Sun** Punta Espinoza (Fernandina), Punta Vicente Roca (Isabela)
- Mon** Santa Cruz Highlands, Baltra

PRICES FROM

SEASON	LOW	HIGH
Standard Inside Cabin	£3402	£3593
Standard Plus Cabin	£4148	£4360
Junior Suite	£4690	£4919

SEASONS: **Low:** Rest of the year
High: December to February

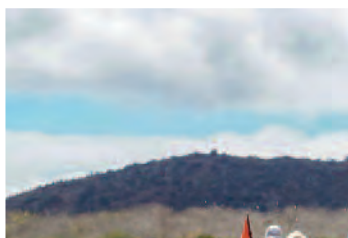
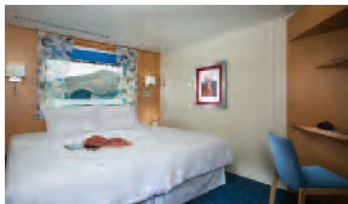
Prices per person including flights from/to Guayaquil to Galapagos, accommodation in your chosen cabin for double occupancy, all daily guided excursions, full board and soft drinks with meals, wet suits and snorkelling equipment. Galapagos park fee of US\$100 per person is not included.

Arrivals or departures on Mondays & Thursdays. Wellness & Yoga. Family friendly departure dates.

SANTA CRUZ II *First* web veloso.com/santacruz



Designed for operations in remote areas, M/V Santa Cruz II is a modern expedition ship. She accommodates up to 90 guests in 50 spacious, contemporary cabins, created with the ethos of simplicity. All cabins and suites have picture windows, air conditioning, and private facilities. Passengers can relax in the ample common areas including indoor and outdoor dining restaurant, two lounge bars, a library, and two ocean view hot tubs. There is also a fitness centre. Daily excursions are led by naturalist guides, as well as snorkelling and kayaking. There is a glass bottomed boat for those who prefer to stay dry.



Northern 4 night itinerary

- Mon** Baltra airport, Las Bachas
- Tue** Buccaneer Cove, Puerto Egas
- Wed** Red Beach, Bartolomé
- Thu** Prince Philip Steps, Darwin Bay
- Fri** Puerto Baquerizo Moreno / Tortoise Breeding Centre

Western 6 night itinerary

- Fri** Baltra airport, North Seymour
- Sat** Punta Vicente Roca, Punta Espinoza
- Sun** Tagus Cove, Urbina Bay
- Mon** Charles Darwin Research Station, Optional activities
- Tue** Post Office Bay Baroness Cove
- Wed** Punta Cormorant
- Thu** Baltra airport

Eastern 4 night itinerary

- Sat** Puerto Baquerizo Moreno, Punta Pitt
- Sun** Santa Fe, South Plaza
- Mon** Charles Darwin Station, Optional Activities
- Tue** Punta Suarez, Gardner Bay
- Wed** Baltra airport



PRICES FROM 7 days • 6 nights

SEASON	LOW	HIGH
Standard Cabin	£4451	£4752
Superior Cabin	£4637	£4923
Deluxe Cabin	£4768	£5053

PRICES FROM 5 days • 4 nights

SEASON	LOW	HIGH
Standard Cabin	£3320	£3523
Superior Cabin	£3443	£3646
Deluxe Cabin	£3533	£3736

SEASONS: **Low:** Rest of the year
High: December to February

Prices are per person including return flights from Guayaquil to Galapagos, accommodation in a cabin for double occupancy, guides, excursions, full board (drinks extra). Galapagos park fee of US\$100 per person is not included.



SILVER GALAPAGOS *Deluxe* [web veloso.com/silversea](http://veloso.com/silversea)



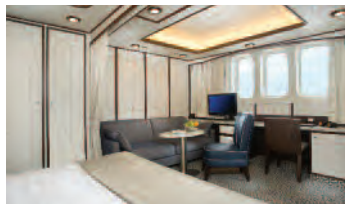
Silversea is renowned for luxury cruising and the Silver Galapagos is the most spacious and luxurious large ship you can choose. It takes the maximum of 100 passengers permitted by the Park, so no other yachts can be in the same spot for excursions at the same time. All cabins are ocean-view suites, many with private balcony and all with the services of a professional butler. Your 'All-Inclusive Lifestyle' includes daily excursions, room service, drinks, gratuities, and open-seating dining with sumptuous gourmet cuisine served in the main restaurant and outdoor grill.

PRICES FROM

SEASON	
Double Cabin	Prices on request*

PLEASE CONTACT US FOR PRICES FOR EACH DEPARTURE DATE

Prices are per person including return flights from Guayaquil to Galapagos, accommodation in a cabin for double occupancy, daily excursions with English speaking expert Galapagos guide, service charge and full board included (drinks are extra). Galapagos park tax of US\$100 per person is extra, payable on arrival.

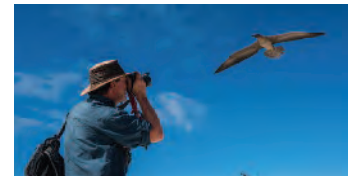


7 night Western Itinerary

- Sat** Baltra Airport, Sullivan Bay
- Sun** Bartolome, Espumilla Beach
- Mon** Punta Vicente Roca (Isabela), Punta Espinoza (Fernandina)
- Tue** Tagus Cove, Elizabeth Bay (Isabela)
- Wed** Post Office Bay, Punta Cormorant, Devil's Crown
- Thu** La Galapaguera, Cerro Brujo (San Cristobal)
- Fri** Twin Craters, Darwin Research Centre (Santa Cruz)
- Sat** Bachas Beach, Baltra Airport

7 night Central itinerary

- Sat** Baltra Airport, Dragon Hill
- Sun** Prince Philip's Steps, Darwin Bay (Genovesa)
- Mon** North Seymour, El Chato Tortoise Reserve (Santa Cruz)
- Tue** Punta Pitt, El Junco Lagoon
- Wed** San Cristobal Visitor's Centre, Frigate Hill
- Thu** Gardner Bay, Punta Suarez (Española)
- Fri** Darwin Research Centre, South Plazas
- Sat** Baltra Airport



EVOLUTION *Deluxe* [web veloso.com/evolution](http://veloso.com/evolution)



The motor yacht Evolution has a 1920s style with modern comfort and a maximum of 32 passengers in 16 well-appointed cabins with private facilities. She has a crew of 18, a cruise director plus 2 naturalist guides for daily excursions ashore in the morning and afternoon. All cabins have climate controls and ample space to hang and store clothing. There is a large outside deck with lounge chairs for sunbathing and unwinding. Please view the full itinerary on our website using the link above.

7 Night North-West Itinerary

- Sat** Baltra Airport, Bachas Beach (Santa Cruz)
- Sun** Darwin Bay, Prince Philip's Steps (Genovesa)
- Mon** Punta Meija, Black Beach (Marchena)
- Tue** Punta Albemarle, Punta Vicente Roca (Isabela)
- Wed** Punta Espinosa (Fernandina), Urbina Bay (Isabela)
- Thu** Elizabeth Bay, Punta Moreno (Isabela)
- Fri** Aliso de la Paz, La Loberia (Floreana)
- Sat** Santa Cruz Highlands, Baltra Airport

7 Night South-East Itinerary

- Sat** Baltra Airport, Darwin Research Centre (Santa Cruz)
- Sun** Punta Cormorant, Post Office Bay (Floreana)
- Mon** Punta Suarez, Gardner Bay
- Tue** Los Lobos, Kicker Rock, Punta Pitt (San Cristobal)
- Wed** Santa Fe, South Plaza
- Thu** Sullivan Bay, Bartolome
- Fri** James Bay, Rabida
- Sat** North Seymour, Baltra Airport

PRICES FROM

SEASON	LOW	HIGH
Standard Cabin	£5210	£6130

SEASONS: **Low:** Rest of the year
High: December to February





CACHALOTE EXPLORER *Tourist*

web veloso.com/cachalote

The Cachalote Explorer is a 96ft schooner rigged motor sailor. An old style sailing ship with an attractive dark wood interior, she accommodates up to 16 passengers in 7 double cabins with upper and lower berths (one cabin has a double bed), all with air conditioning, private facilities with hot shower. There is an indoor salon, dining room and bar, and plenty of outdoor deck space to sit and enjoy the sun, fresh air and scenery. An expert naturalist guide leads all daily excursions and activities on the islands.



PRICES FROM

SEASON	LOW	HIGH
Standard Cabin	£3280	£3480

SEASONS:

High: Rest of the year

Low: December to February

Prices are per person including return flights from Guayaquil to Galapagos, accommodation in a cabin for double occupancy, daily excursions with English speaking expert Galapagos guide, service charge and full board included (drinks are extra). Galapagos park tax of US\$100 per person is extra, payable on arrival.



7 night itinerary: *Genovesa*

- Wed** Baltra, Santa Cruz Highlands & Darwin Research Centre
- Thu** South Plaza, Santa Fe
- Fri** Cerro Brujo, El Junco Lagoon (San Cristobal)
- Sat** Gardner Bay, Punta Suarez (Española)
- Sun** Punta Cormorant, Devil's Crown, Post Office Bay (Floreana)
- Mon** Dragon Hill, Sullivan Bay (Santa Cruz)
- Tue** Darwin Bay, Prince Philip's Steps (Genovesa)
- Wed** Black Turtle Cove, Baltra Airport (Santa Cruz)

7 night itinerary: *Fernandina*

- Wed** Baltra, Santa Cruz Highlands & Darwin Research Centre
- Thu** Chinese Hat, Rabida
- Fri** Sierra Negra & Puerto Villamil, Las Tintoreras, Los Humadales (Isabela)
- Sat** Punta Moreno & Elizabeth Bay (Isabela)
- Sun** Urbina Bay & Tagus Cove (Isabela)
- Mon** Punta Espinoza (Fernandina), Punta Vicente Roca (Isabela)
- Tue** Puerto Egas (Santiago), Bartolome Island
- Wed** North Seymour, Baltra Airport (Santa Cruz)

BELUGA *First* **web** veloso.com/beluga

M/Y Beluga is a spacious and comfortable first class motor yacht, with 8 double cabins for a maximum of 16 passengers. Each cabin has private bathroom, air conditioning, portholes or windows and with either twin or double beds - there is one cabin with an extra berth for triple

occupancy. There is ample deck space with seating to enjoy the views, and a comfortable lounge area with panoramic windows and two large tables for family-style dining. An expert Naturalist guide is on board to lead the daily excursions ashore in the morning and afternoon.



7 night itinerary: *Fernandina*

- Fri** Baltra airport, Darwin Station Santa Cruz Highlands
- Sat** Punta Cormorant, Devil's Crown, Post Office Bay (Floreana Island)
- Sun** (Isabela Island) Puerto Villamil Sierra Negra Volcano
- Mon** Punta Moreno, Elizabeth Bay (Isabela Island)
- Tue** Urbina Bay, Tagus Cove (Isabela Island)
- Wed** Punta Espinoza, Punta Vicente Roca, (Fernandina Island)
- Thu** Santiago, Bartolome Islands
- Fri** North Seymour, Baltra Airport

7 night itinerary: *Genovesa*

- Fri** Baltra Airport, Dragon Hill
- Sat** Santa Fe, South Plaza Islands
- Sun** Cerro Brujo, La Galapaguera (San Cristobal Island)
- Mon** Gardner Bay, Punta Suarez (Espanola Island)
- Tue** Darwin Research Centre, Santa Cruz Highlands
- Wed** Chinese Hat, Sullivan Bay (Santiago Island)
- Thu** (Genovesa Island) Darwin Bay Prince Philip's Steps
- Fri** Turtle Cove, Baltra Airport

PRICES FROM

SEASON	LOW	HIGH
Double Cabin	£3918	£4118

SEASONS:

High: Rest of the year

Low: December to February

Prices are per person including return flights from Guayaquil to Galapagos, accommodation in a cabin for double occupancy, daily excursions with English speaking expert Galapagos guide, service charge and full board included (drinks are extra). Galapagos park tax of US\$100 per person is extra, payable on arrival.



ISLAND HOPPING

Island hopping allows you to choose your specific dates of travel and any duration or if you prefer to stay on land. You stay at hotels on the islands with excursions during the day, to view wildlife and locations of special interest. Three islands have hotels: Santa Cruz and San Cristobal Islands, which have an airport and Isabella which has a small airstrip.

Itineraries are flexible and can be tailored to your preference and you have a selection of excursions to choose from each day. Travel between the islands is by speedboat or flight on a small, general aviation propeller aircraft.

The flights are weather dependent, but are quicker, more comfortable, though more expensive. Speedboat transfers are bumpy, noisy and take 2-3 hours.



PRICES FROM

TRANSPORT	SPEEDBOAT - FLIGHTS	
6 days • 5 nights	£3588	RQ
8 days • 7 nights	RQ	£4499

SEASONS:
High: July-August, December
Low: Rest of the year

Prices are per person for 2 people travelling together, including return flights to/from the Galapagos, accommodation in a room for double occupancy, excursions listed with English speaking expert Galapagos guide, service charge and meals as shown on the itinerary (B). Galapagos park tax of US\$100 per person is extra, payable on arrival.

There are a wide variety of hotels and decor, from tourist to first class, so you have a good base for full day excursions to the more remote, isolated locations where you can get close to the Galapagos wildlife. **Sample Itineraries:**

SAN CRISTOBAL-SANTA CRUZ
 6 Days/5 night Itinerary (Speedboat)

- Day 1** Flight to San Cristobal. On arrival you are met by your guide and taken to your hotel and the Interpretation Centre. (B)
- Day 2** Full day visit to the Kiker Roak or Islas Lobos plus swimming/snorkeling (B,L)
- Day 3** Transfer and speedboat (Please enquire for flight) to Puerto Ayora, Santa Cruz. Transfer to the Highlands to see the Giant Turtles, then to your hotel.(B,L)
- Day 4** Full day visit to one of four islands Bartolome, Seymour, Plazas, Santa Fe (B,L)
- Day 5** Full day visit to another island of the ones listed above. (B,L)
- Day 6** Visit the Charles Dawin Station. Transfer to the airport and flight back (B)

SAN CRISTOBAL-SANTA CRUZ-ISABELLA
 8 Days / 7 nights Itinerary (Local Flights)

- Days 1-4 are the same.**
- Day 5** Visit the Charles Dawin Station. Transfer and transport to Puerto Viallamil on Isabela Island. (B). Overnight.
- Day 6** Full day visit to a maze of tunnels of volcanic rock teeming with marine life. Swimming and snorkeling. Return to visit the Tortoise Breeding Centre. (B)
- Day 7** Full day visit to the Sierra Negra Volcano taking a car to the top, walking and horseriding into the crater. Box lunch. Visit Volcano Chico and return. (B)
- Day 8** Early morning speedboat boat back to Puerto Ayora (2 to 3 hours), and to the airport for your flight back. (B)

FINCH BAY HOTEL *First*

[web veloso.com/finchbay](http://www.veloso.com/finchbay)

Located just outside Puerto Ayora, on Santa Cruz Island, the charming Finch Bay Eco-Hotel stands surrounded by mangroves just a few steps from a small beach, and offers 27 comfortable rooms in a tranquil setting on a small bay and accessible by water taxi. Guests can relax by the pool or enjoy by day the excursions on the hotel's private yacht, Sea Lion, while spending the night on land - ideal for those who do not have good sea legs. Each room has a small porch with seating, facing either the gardens or the ocean, private facilities,

air-conditioning and unlimited water supply as the hotel has its own water treatment plant. This ecologically oriented hotel also has innovative waste processing and recycling programmes. The entire infrastructure is totally oriented to a concept of true ecotourism in a pristine natural environment. Delicious healthy international and Galapagos inspired menus are prepared daily, using fresh ingredients. The Finch Bay Hotel is accessible from the airport of Baltra by car or bus and boat across the channel, a journey of 2 hours.

PRICES FROM 4 days • 3 nights

FINCH BAY HOTEL	£1129
FINCH BAY PACKAGE	£1924

Hotel plus transfer: Prices are per person including flights to/from the mainland, accommodation sharing a room for double occupancy, breakfast and service charge. You can try the restaurants in town and combine taking optional local excursions some days, with leisure time for walks, visit the Charles Darwin Station, or relax at the hotel.

Galapagos park fee of \$100 per person is extra.

Finch Bay Package: Includes the above, plus full board (B,L,D) and two full day guided excursions by boat to nearby islands. Bear in mind that these day trips entail two long motorised return journeys.

